

May 2010 NEET and Not Known Cohort Analysis

The data contained within this report has been compiled from the Connexions South London Client Caseload Information System (CCIS) Management Information return for May 2010.

The Report provides an analysis of young people aged 16-18 and 19 years within the NEET group, detailed by the following categories :

- Gender
- Age
- Support Level
- Ethnic Origin
- Vulnerable Group Characteristics
- Top 25 Wards
- Not Known

The 16-18 NEET Group has also been analysed to show the following :

- Availability to the Labour Market
- Non availability to the Labour Market
- NEET Joiners & leavers

Overall

16-18

The Adjusted NEET figure for ages 16-18 in Sutton in May 2010 is 4.6%, which shows no change from April 2010. The actual number of NEET young people within Sutton is 205 which is a small decrease in 6 young people from April 2010 total of 214. The Not Known percentage for Sutton in May 2010 for this age range is 4.7% or 267 young people. This shows no change from April 2010 where 233 young people were Not Known.

19 Year Olds

The Adjusted NEET figure for 19 year olds in Sutton in May 2010 is 7%, which is an increase of 0.6% since April 2010. The actual number of NEET young people within Sutton is 87 which is a small decrease in 1 young person from the April 2010 total of 88. The Not Known percentage for 19 year olds in Sutton in May 2010 is 21% or 426 young people. This is an increase of 1.1% from April 2010 where 406 young people were Not Known.

Gender, Age & Support Level

16-18

The 16-18 NEET totals for males in Sutton are similar than their female counterpart with 105 (51.2%) and 100 (48.8%) young people respectively. The majority of 16-18 NEET are 17 and 18 years old with 48.3% and 42.9% respectively. 16 year olds only make up 8.8% (18) of the NEET group in May 2010. The majority of NEET in this age range were described as having support levels of "Supported" or "Minimum" with totals of 67 (32.7%) and 113 (55.1%) each. Only 12.2% (25) of 16-18 year old NEET were classified as having "Intensive" needs.

19 Year Olds

Most of 19 year old NEET in Sutton are Female with totals of 55 (63.2%) and 32 (36.8%) for female and male young people respectively. The majority of NEET in this age range were described as having a support level of "Supported" or "Minimum" with totals of 28 (32.2%) and 47 (54%) respectively. The remaining 12 (13.8%) of 19 year old NEET were classified as having "Intensive" needs.

Ethnicity

16-18

The majority of 16-18 NEET in Sutton in May 2010 have an ethnicity group of White with 176 young people (85.9%). The other largest totals are from the Black and Mixed ethnic groups with 8 (3.9%) and 10 (4.9%) young people respectively. The other ethnic groups make up 5.4% (11) of the NEET young people in this age range.

19 Year Olds

The majority of 19 year old NEET in Sutton in May 2010 have an ethnicity group of White with 74 young people (85.1%). The other largest totals are from the Mixed ethnic group with 6 (6.9%) young people. The remaining groups make up 3.5% (3) of the NEET young people in this age range.

Vulnerable Groups

16-18

The highest totals of NEET young people having a vulnerable group characteristic are those described as having LDD and Teenage Mothers with 8.3% (17) and 9.8% (20) respectively.

19 Year Olds

The highest total of NEET young people having a vulnerable group characteristic are those described as Teenage Mothers with 24.1% (21). The other large vulnerable group percentages of NEET young people in this age range are those described as LDD with 10 (11.5%) respectively.

16-18 NEET Availability

Available

In May 2010 87.3% of the total 16-18 NEET group are available to the labour market. Within this available group 163 (91.1%) are described as seeking employment, education and training. The other largest totals are 7.3% (13) and 1.1% (2) for those described as NEET with other PDOs and NEET not ready for work or learning respectively.

Not Available

In May 2010, 12.7% of the total 16-18 NEET group are not available to the labour market. Within this unavailable group, 15 (57.7%) are described as NEET Teenage parents. The other significant totals are 26.9% (7) for those classified as NEET illness.

NEET Joiners & Leavers

Joiners

Of the 24 young people who joined the Sutton NEET group in May 2010, 45.8% (11) are from education. The other largest totals are from currency re-established with 33.3% (8) of young people.

Leavers

Out of the 30 young people who left the Sutton NEET group in May 2010, 13.3% (4) are each going to employment and education. The other largest percentage of the NEET leavers this month entered the currency expired group which make up 66.7% (20) of the total young people leaving NEET.

NEET Ward Analysis

16-18

The largest number of 16-18 NEET in Sutton in May 2010 are from St. Helier ward with 17.1% (35) of the total NEET group. Other large totals are from Wandle Valley and Sutton Central wards with 11.7% (24) and 10.7% (22) of NEET group respectively.

19 Year Olds

The largest number of 19 year old NEET in Sutton in May 2010 are from St. Helier and Sutton central wards with 13.8% (12) and 10.3% (9) of the total NEET group respectively.

Not Known Analysis

16-18

Of the 267 Not Known, the largest proportion have expired destination currencies with 70.8% (189). The other largest percentage are those with destination described as current situation unknown with 16.5% (44).

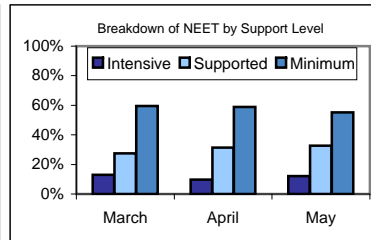
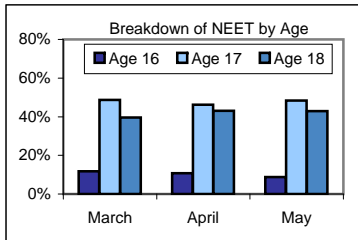
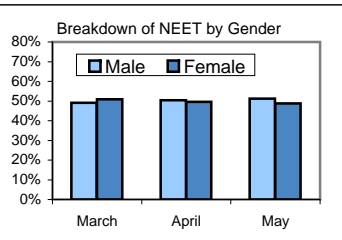
19 Year Olds

The breakdown of the 426 Not Known for the 19 year olds in Sutton in May show the largest proportion have expired destination currencies with 81.5% (347). The other large percentage are those with destinations described as current situation not known with 10.1% (43).

NEET Aged 16-18

The Adjusted NEET Figure is 4.6% (254 Adj).

The unadjusted NEET Total is 205 and the Not Known is 4.73% (267)



Gender

51.2% (105) are Male
48.8% (100) are Female

Age

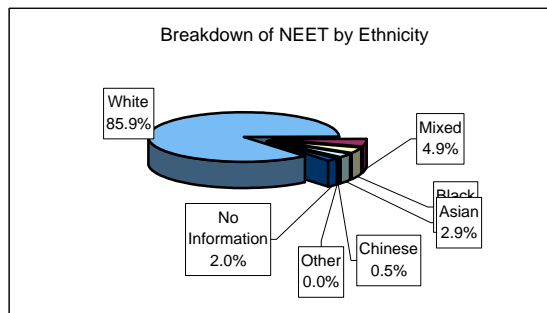
8.8% (18) are aged 16
48.3% (99) are aged 17
42.9% (88) are aged 18

Support level

55.1% (113) Minimum
32.7% (67) Supported
12.2% (25) Intensive

Ethnic Origin

176	White	85.9%
10	Mixed	4.9%
8	Black	3.9%
6	Asian	2.9%
1	Chinese	0.5%
0	Other	0.0%
4	No Information	2.0%



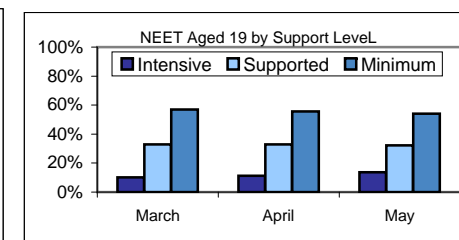
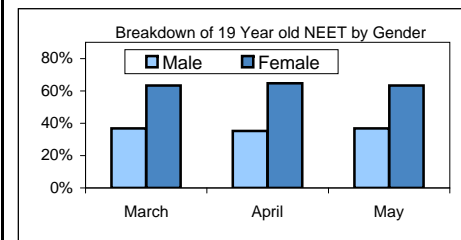
Vulnerable Group Characteristics

17	LDD	8.3%	+0.4% ↑
20	Teenage Mother	9.8%	+0.9% ↑
0	Parent	0.0%	+0% ⇄
3	Pregnancy	1.5%	+0.5% ↑
2	Supervised by YOTS	1.0%	+0.1% ↑
7	Care Leaver	3.4%	-0.3% ↓
1	Substance misuse	0.5%	+0% ↑
2	Young Carer	1.0%	+0.5% ↑
2	Refugee/Asylum Seeker	1.0%	+0.1% ↑
1	Teenage Father	0.5%	+0% ↑
1	Looked After/InCare	0.5%	-0.4% ↓

NEET Aged 19

The Adjusted NEET Figure is 7.0% (136 Adj).

The unadjusted NEET Total is 87 and the Not Known is 20.99% (426)



Gender

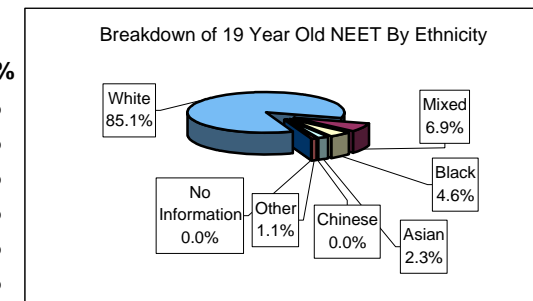
36.8% (32) are Male
63.2% (55) are Female

Support level

54.0% (47) Minimum
32.2% (28) Supported
13.8% (12) Intensive

Ethnic Origin

74	White	85.1%
6	Mixed	6.9%
4	Black	4.6%
2	Asian	2.3%
0	Chinese	0.0%
1	Other	1.2%
0	No Information	0.0%



19 year Old Vulnerable Group Characteristics

10	LDD	11.5%	+1.3% ↑
21	Teenage Mother	24.1%	-2% ↓
0	Parent	0.0%	+0% ⇄
2	Pregnancy	2.3%	+0% ↑
3	Supervised by YOTS	3.5%	+1.2% ↑
3	Care Leaver	3.5%	+0% ↑
0	Substance misuse	0.0%	+0% ⇄
1	Young Carer	1.2%	+0% ↑
0	Refugee/Asylum Seeker	0.0%	+0% ⇄
0	Teenage Father	0.0%	+0% ⇄
1	Looked After/InCare	1.2%	+0% ↑

NEET Aged 16-18

Availability

87.3% (179) of the NEET group are available to the labour market.

163	Seeking employment, education or training	91.1%	+1.1% ↑
0	Waged PDOs	0.0%	+0% ⇄
13	Other PDOs	7.3%	-0.7% ↓
2	Not yet ready for work or learning	1.1%	+0.1% ↑
0	Awaiting an E2E place	0.0%	+0% ⇄
0	Awaiting sub level 2 place	0.0%	+0% ⇄
0	Awaiting level 2 place	0.0%	+0% ⇄
0	Awaiting level 3+ place	0.0%	-1.1% ↓
1	Start Date agreed	0.6%	+0.6% ↑
0	Activity Agreement	0.0%	+0% ⇄
0	New Deal Gateway	0.0%	+0% ⇄

12.7% (26) are not available to the labour market.

1	Young carers	3.9%	-0.2% ↓
15	Teenage parents	57.7%	+5.7% ↑
7	Illness	26.9%	-5.1% ↓
3	Pregnancy	11.5%	-0.5% ↓
0	Religious grounds	0.0%	+0% ⇄
0	Unlikely to be economically active	0.0%	+0% ⇄
0	Other reason	0.0%	+0% ⇄

2	Other (not EET or NEET)	1.0%	+1% ↑
2	Custody	1.0%	+1% ↑
0	Refugees/Asylum seekers	0.0%	+0% ⇄

NEET Joiners

24 young people joined the NEET group in May

11	From Education	45.8%	+27.1% ↑
1	From Employment	4.2%	-24% ↓
2	From Government supported training	8.3%	-1.1% ↑
0	From NEET in other area	0.0%	+0% ⇄
2	From Other (inc custodial sentence)	8.3%	-1.1% ↓
8	From Currency re-established	33.3%	-1.1% ↓

NEET Leavers

30 young people left the NEET group in May

1	Into Education	3.3%	+0.4% ↑
4	Into Employment	13.3%	-7.3% ↓
4	Into Government Supported Training	13.3%	+7.5% ↑
1	Into NEET in other area	3.3%	+3.3% ↑
0	Into Custodial Sentence	0.0%	+0% ⇄
0	Into Moved Away	0.0%	-5.9% ↓
0	Into Cannot Be Contacted	0.0%	+0% ⇄
0	Into Refused to disclose activity	0.0%	+0% ⇄
20	Into Currency Expired	66.7%	+4.9% ↑
0	Into Unknown Activity	0.0%	+0% ⇄
0	Into Other Reason	0.0%	-2.9% ↓

16-18 NEET Breakdown by Top 25 Wards

35	SUT - St Helier	17.1%
24	SUT - Wandle Valley	11.7%
22	SUT - Sutton Central	10.7%
13	SUT - Beddington North	6.3%
13	SUT - Beddington South	6.3%
11	SUT - Wallington South	5.4%
10	SUT - The Wrythe	4.9%
10	SUT - Stonecot	4.9%
9	SUT - Carshalton South and Clockhouse	4.4%
9	SUT - Wallington North	4.4%
9	SUT - Sutton North	4.4%
8	SUT - Worcester Park	3.9%
7	SUT - Sutton West	3.4%
7	SUT - Cheam	3.4%
6	SUT - Carshalton Central	2.9%
6	SUT - Belmont	2.9%
3	SUT - Sutton South	1.5%
3	SUT - Nonsuch	1.5%

19 year Old NEET Breakdown by Top 25 Wards

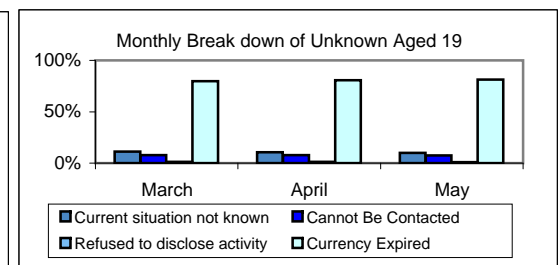
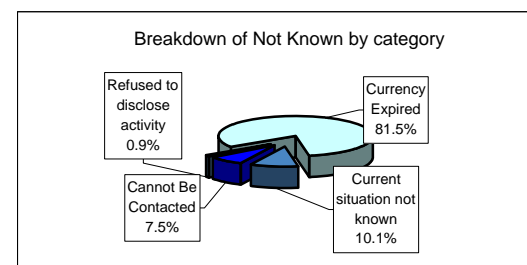
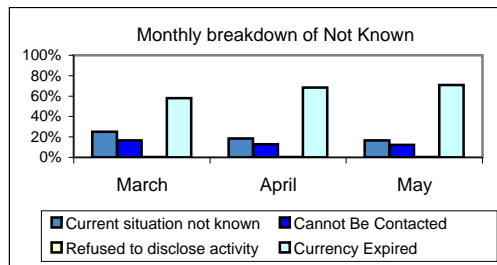
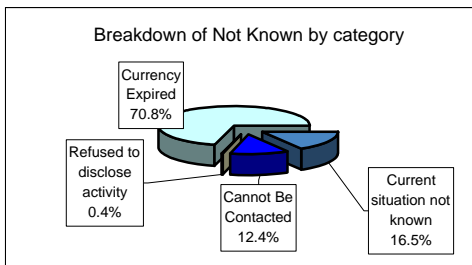
12	SUT - St Helier	13.8%
9	SUT - Sutton Central	10.3%
8	SUT - Beddington South	9.2%
7	SUT - Wallington North	8.1%
7	SUT - Sutton North	8.1%
6	SUT - The Wrythe	6.9%
6	SUT - Carshalton South and Clockhouse	6.9%
5	SUT - Wandle Valley	5.8%
4	SUT - Stonecot	4.6%
4	SUT - Sutton West	4.6%
4	SUT - Cheam	4.6%
4	SUT - Carshalton Central	4.6%
3	SUT - Beddington North	3.5%
3	SUT - Worcester Park	3.5%
2	SUT - Wallington South	2.3%
2	SUT - Sutton South	2.3%
1	SUT - Nonsuch	1.2%

16-18 Not Known Breakdown

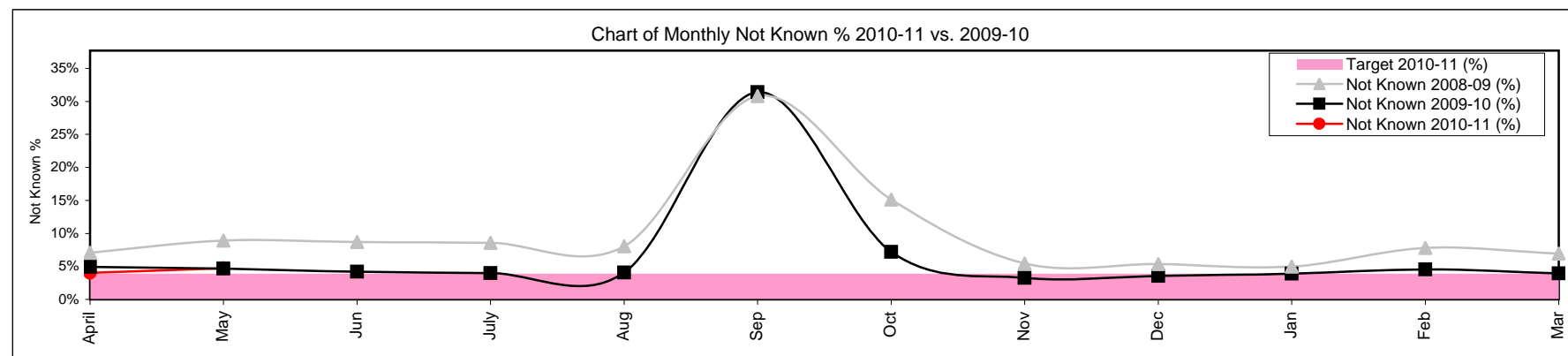
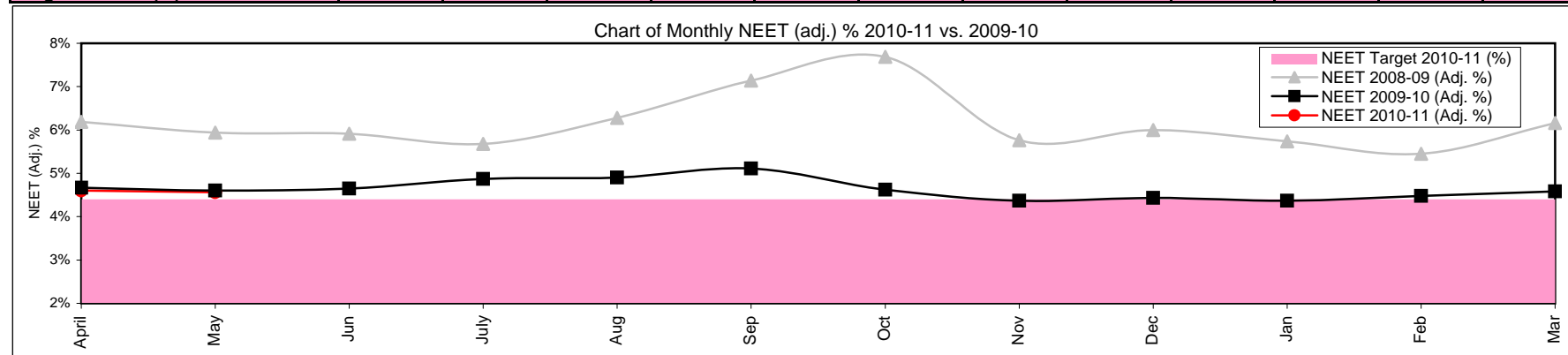
267	Not Known	4.7%	+0.7%	↑
44	Current situation not known	16.5%	-2%	↓
33	Cannot Be Contacted	12.4%	-0.5%	↓
1	Refused to disclose activity	0.4%	-0.1%	↓
189	Currency Expired	70.8%	+2.6%	↑

19 Year Old Not Known Breakdown

426	Not Known	21.0%	+2.1%	↑
43	Current situation not known	10.1%	-0.5%	↓
32	Cannot Be Contacted	7.5%	-0.1%	↓
4	Refused to disclose activity	0.9%	-0.3%	↓
347	Currency Expired	81.5%	+0.9%	↑



16-18 NEET Yearly Comparison	April	May	June	July	August	September	October	November	December	January	February	March
16-18 Cohort 2009-10	5842	5655	5457	5270	5085	7438	6964	6713	6450	6281	6123	5974
16-18 Cohort 2010-11	5786	5650	0	0	0	0	0	0	0	0	0	0
EET 2009-10	5323	5177	5004	4828	4655	4899	6189	6220	5959	5795	5625	5517
EET 2010-11	5339	5176	0	0	0	0	0	0	0	0	0	0
NEET 2009-10	226	210	217	226	219	200	272	271	259	240	220	222
NEET 2010-11	214	205	0	0	0	0	0	0	0	0	0	0
NEET 2009-10 (Adj. %)	4.67%	4.60%	4.65%	4.87%	4.90%	5.11%	4.62%	4.37%	4.43%	4.37%	4.48%	4.58%
NEET 2010-11 (Adj. %)	4.60%	4.56%	0.00%	0.00%	0.00%	0.00%	0.00%	0.00%	0.00%	0.00%	0.00%	0.00%
NEET Target 2010-11 (%)	4.40%	4.40%	4.40%	4.40%	4.40%	4.40%	4.40%	4.40%	4.40%	4.40%	4.40%	4.40%
Not Known 2009-10	288	263	230	211	207	2336	500	219	230	245	278	235
Not Known 2010-11	233	267	0	0	0	0	0	0	0	0	0	0
Not Known 2009-10 (%)	4.93%	4.65%	4.21%	4.00%	4.07%	31.41%	7.18%	3.26%	3.57%	3.90%	4.54%	3.93%
Not Known 2010-11 (%)	4.03%	4.73%	0.00%	0.00%	0.00%	0.00%	0.00%	0.00%	0.00%	0.00%	0.00%	0.00%
Target 2010-11 (%)	3.90%	3.90%	3.90%	3.90%	3.90%	3.90%	3.90%	3.90%	3.90%	3.90%	3.90%	3.90%



Monthly NEET and Not Known Cohort Analysis

Definitions

1 Introduction

- 1.1 The data within this report has been compiled from the Connexions South London Client Caseload Information Systems Management Information return to the Department for Education for 2010/11.

2 Definitions

- 2.1 The Not in Education, Employment or Training (NEET) cohort is defined by the following destinations:

- Any unemployed category
- Personal Development Opportunity
- Personal Development Opportunity – Waged
- Supporting Family Young Carer
- Supporting Family – Teenage Parent
- Not Available - Illness
- Pregnancy – (11 weeks to due date)
- Not Available - Religious or Cultural grounds
- Never Economically Active
- Voluntary work
- New Deal Gateway
- Not available - Other reason

2.2 The Not Known cohort is defined by the following destinations:

- Current situation Not Known
- Cannot be contacted
- Refused to provide information
- Currency expired

2.3 The Vulnerable group categories are defined as the follow target groups:

- LDD
- Teenage Parent
- Pregnancy
- Supervised by YOTS
- Care Leaver
- Substance misuse
- Young Carer
- Refugee/Asylum Seeker
- Teenage Father
- Looked After/In Care

2.4 The NEET adjusted percentage and numbers are calculated using the following formula:

- DfE research determined that from those who lapsed from EET 92% were likely to still be EET and so the remaining 8% would be counted as NEET. For those who had lapsed from NEET, 58% were likely to have re-joined NEET and so the remaining 42% would be EET.
- This calculation is then applied to those who have lapsed to produce the adjusted NEET percentage.
- The adjusted lapsed figures are added back into the EET and NEET cohorts, the numbers are re-calculated (NEET/EET + NEET).