

## June 2010 NEET and Not Known Cohort Analysis

The data contained within this report has been compiled from the Connexions South London Client Caseload Information System (CCIS) Management Information return for June 2010.

The Report provides an analysis of young people aged 16-18 and 19 years within the NEET group, detailed by the following categories :

- Gender
- Age
- Support Level
- Ethnic Origin
- Vulnerable Group Characteristics
- Top 25 Wards
- Not Known

The 16-18 NEET Group has also been analysed to show the following :

- Availability to the Labour Market
- Non availability to the Labour Market
- NEET Joiners & leavers

## Overall

### 16-18

The Adjusted NEET figure for ages 16-18 in Sutton in June 2010 is 4.6%, which shows no change from May 2010. The actual number of NEET young people within Sutton is 199 which is a small decrease in 6 young people from May 2010 total of 205. The Not Known percentage for Sutton in June 2010 for this age range is 5% or 276 young people. This shows a 0.3% increase from May 2010 where 267 young people were Not Known.

### 19 Year Olds

The Adjusted NEET figure for 19 year olds in Sutton in June 2010 is 6.8%, which is a decrease of 0.2% since May 2010. The actual number of NEET young people within Sutton is 83 which shows a decrease in 4 young people from the May 2010 total of 87. The Not Known percentage for 19 year olds in Sutton in June 2010 is 20.9% or 419 young people. This is a decrease of 0.1% from May 2010 where 426 young people were Not Known.

## Gender, Age & Support Level

### 16-18

The 16-18 NEET totals for males in Sutton are similar than their female counterpart with 105 (52.8%) and 94 (47.2%) young people respectively. The majority of 16-18 NEET are 17 and 18 years old with 50.3% and 43.7% respectively. 16 year olds only make up 6% (12) of the NEET group in June 2010. The majority of NEET in this age range were described as having support levels of "Supported" or "Minimum" with totals of 64 (32.2%) and 109 (54.8%) each. Only 13.1% (26) of 16-18 year old NEET were classified as having "Intensive" needs.

### 19 Year Olds

Most of 19 year old NEET in Sutton are Female with totals of 45 (54.2%) and 38 (45.8%) for female and male young people respectively. The majority of NEET in this age range were described as having a support level of "Supported" or "Minimum" with totals of 27 (32.5%) and 43 (51.8%) respectively. The remaining 13 (15.7%) of 19 year old NEET were classified as having "Intensive" needs.

## Ethnicity

### 16-18

The majority of 16-18 NEET in Sutton in June 2010 have an ethnicity group of White with 170 young people (85.4%). The other largest totals are from the Black and Mixed ethnic groups with 8 (4%) and 11 (5.5%) young people respectively. The other ethnic groups make up 5% (10) of the NEET young people in this age range.

### 19 Year Olds

The majority of 19 year old NEET in Sutton in June 2010 have an ethnicity group of White with 73 young people (88%). The other largest totals are from the Black and Mixed ethnic groups with 5 (6%) and 3 (3.6%) young people. The remaining groups make up 2.4% (2) of the NEET young people in this age range.

## Vulnerable Groups

### 16-18

The highest totals of NEET young people having a vulnerable group characteristic are those described as having LDD and Teenage Mothers with 8% (16) and 9.1% (18) respectively.

### 19 Year Olds

The highest total of NEET young people having a vulnerable group characteristic are those described as Teenage Mothers with 24.1% (20). The other large vulnerable group percentages of NEET young people in this age range are those described as LDD with 10 (12.1%) respectively.

## 16-18 NEET Availability

### Available

In June 2010 86.9% of the total 16-18 NEET group are available to the labour market. Within this available group 158 (91.3%) are described as seeking employment, education and training. The other largest totals are 5.8% (10) and 1.2% (2) for those described as NEET with other PDOs and NEET not ready for work or learning respectively.

### Not Available

In June 2010, 13.1% of the total 16-18 NEET group are not available to the labour market. Within this unavailable group, 16 (61.5%) are described as NEET Teenage parents. The other significant totals are 30.8% (8) for those classified as NEET illness.

## NEET Joiners & Leavers

### Joiners

Of the 21 young people who joined the Sutton NEET group in June 2010, 28.6% (6) are from education. The other largest totals are from currency re-established with 38.1% (8) of young people.

### Leavers

Out of the 23 young people who left the Sutton NEET group in June 2010, 21.7% (5) are going to employment destinations. The other largest percentage of the NEET leavers this month entered the currency expired group which make up 60.9% (14) of the total young people leaving NEET.

## NEET Ward Analysis

### 16-18

The largest number of 16-18 NEET in Sutton in June 2010 are from St. Helier ward with 14.6% (29) of the total NEET group. Other large totals are from Wandle Valley and Sutton Central wards with 12.6% (25) and 11.1% (22) of NEET group respectively.

### 19 Year Olds

The largest number of 19 year old NEET in Sutton in June 2010 are from St. Helier and Beddington South wards with 15.7% (13) and 9.6% (8) of the total NEET group respectively.

## Not Known Analysis

### 16-18

Of the 276 Not Known, the largest proportion have expired destination currencies with 73.9% (204). The other largest percentage are those with destination described as current situation unknown with 14.9% (41).

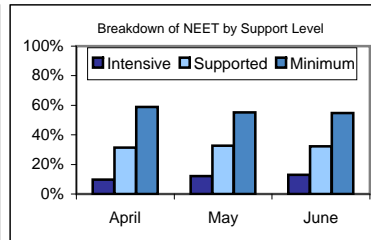
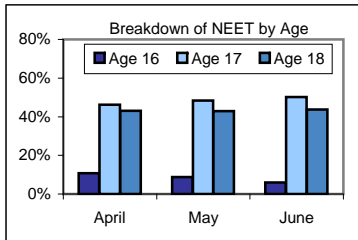
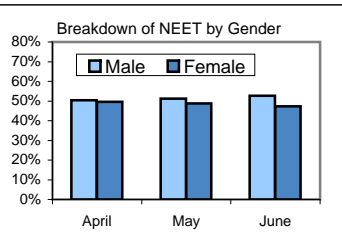
### 19 Year Olds

The breakdown of the 419 Not Known for the 19 year olds in Sutton in June show the largest proportion have expired destination currencies with 82.8% (347). The other large percentage are those with destinations described as current situation not known and cannot be contacted both with 8.1% (34).

### NEET Aged 16-18

The Adjusted NEET Figure is 4.6% (248 Adj).

The unadjusted NEET Total is 199 and the Not Known is 5.03% (276)



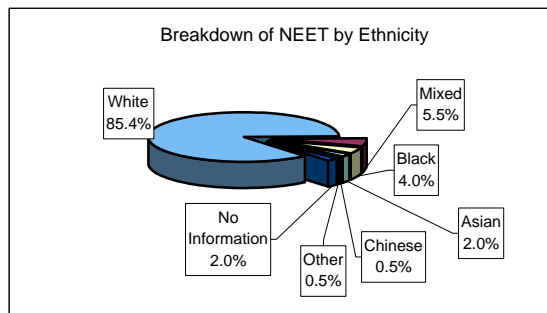
**Gender**  
52.8% (105) are Male  
47.2% (94) are Female

**Age**  
6.0% (12) are aged 16  
50.3% (100) are aged 17  
43.7% (87) are aged 18

**Support level**  
54.8% (109) Minimum  
32.2% (64) Supported  
13.1% (26) Intensive

### Ethnic Origin

170	White	85.4%
11	Mixed	5.5%
8	Black	4.0%
4	Asian	2.0%
1	Chinese	0.5%
1	Other	0.5%
4	No Information	2.0%



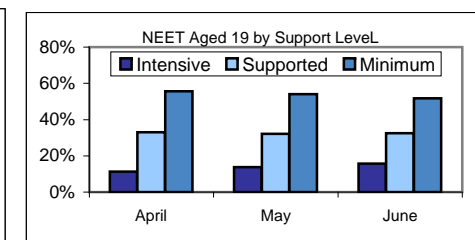
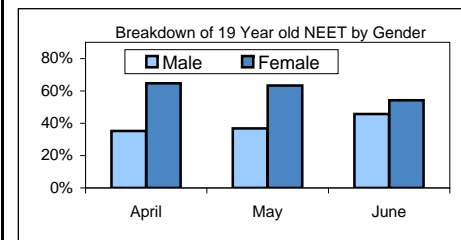
### Vulnerable Group Characteristics

16	LDD	8.0%	-0.3% ↓
18	Teenage Mother	9.1%	-0.7% ↓
0	Parent	0.0%	+0% ⇄
4	Pregnancy	2.0%	+0.6% ↑
2	Supervised by YOTS	1.0%	+0% ↑
7	Care Leaver	3.5%	+0.1% ↑
1	Substance misuse	0.5%	+0% ↑
2	Young Carer	1.0%	+0% ↑
2	Refugee/Asylum Seeker	1.0%	+0% ↑
1	Teenage Father	0.5%	+0% ↑
0	Looked After/InCare	0.0%	-0.5% ↓

### NEET Aged 19

The Adjusted NEET Figure is 6.8% (131 Adj).

The unadjusted NEET Total is 83 and the Not Known is 20.86% (419)

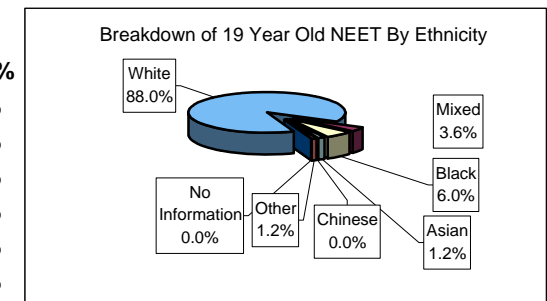


**Gender**  
45.8% (38) are Male  
54.2% (45) are Female

**Support level**  
51.8% (43) Minimum  
32.5% (27) Supported  
15.7% (13) Intensive

### Ethnic Origin

73	White	88.0%
3	Mixed	3.6%
5	Black	6.0%
1	Asian	1.2%
0	Chinese	0.0%
1	Other	1.2%
0	No Information	0.0%



### 19 year Old Vulnerable Group Characteristics

10	LDD	12.1%	+0.6% ↑
20	Teenage Mother	24.1%	-0% ↓
0	Parent	0.0%	+0% ⇄
1	Pregnancy	1.2%	-1.1% ↓
3	Supervised by YOTS	3.6%	+0.2% ↑
4	Care Leaver	4.8%	+1.4% ↑
0	Substance misuse	0.0%	+0% ⇄
1	Young Carer	1.2%	+0.1% ↑
0	Refugee/Asylum Seeker	0.0%	+0% ⇄
0	Teenage Father	0.0%	+0% ⇄
1	Looked After/InCare	1.2%	+0.1% ↑

## NEET Aged 16-18

### Availability

86.9% (173) of the NEET group are available to the labour market.

158	Seeking employment, education or training	91.3%	+0.3% ↑
0	Waged PDOs	0.0%	+0% ⇄
10	Other PDOs	5.8%	-1.5% ↓
2	Not yet ready for work or learning	1.2%	+0% ↑
1	Awaiting an E2E place	0.6%	+0.6% ↑
0	Awaiting sub level 2 place	0.0%	+0% ⇄
1	Awaiting level 2 place	0.6%	+0.6% ↑
0	Awaiting level 3+ place	0.0%	+0% ⇄
1	Start Date agreed	0.6%	+0% ↑
0	Activity Agreement	0.0%	+0% ⇄
0	New Deal Gateway	0.0%	+0% ⇄

13.1% (26) are not available to the labour market.

1	Young carers	3.9%	+0% ⇄
16	Teenage parents	61.5%	+3.9% ↑
8	Illness	30.8%	+3.9% ↑
1	Pregnancy	3.9%	-7.7% ↓
0	Religious grounds	0.0%	+0% ⇄
0	Unlikely to be economically active	0.0%	+0% ⇄
0	Other reason	0.0%	+0% ⇄

3	Other (not EET or NEET)	1.5%	+0.5% ↑
3	Custody	1.5%	+0.5% ↑
0	Refugees/Asylum seekers	0.0%	+0% ⇄

### NEET Joiners

21 young people joined the NEET group in June

6	From Education	28.6%	-17.3% ↓
0	From Employment	0.0%	-4.2% ↑
2	From Government supported training	9.5%	+1.2% ↑
0	From NEET in other area	0.0%	+0% ⇄
5	From Other (inc custodial sentence)	23.8%	+15.5% ↑
8	From Currency re-established	38.1%	+4.8% ↑

### NEET Leavers

23 young people left the NEET group in June

1	Into Education	4.4%	+1% ↑
5	Into Employment	21.7%	+8.4% ↑
1	Into Government Supported Training	4.4%	-9% ↓
0	Into NEET in other area	0.0%	-3.3% ↓
0	Into Custodial Sentence	0.0%	+0% ⇄
2	Into Moved Away	8.7%	+8.7% ↑
0	Into Cannot Be Contacted	0.0%	+0% ⇄
0	Into Refused to disclose activity	0.0%	+0% ⇄
14	Into Currency Expired	60.9%	-5.8% ↓
0	Into Unknown Activity	0.0%	+0% ⇄
0	Into Other Reason	0.0%	+0% ⇄

**16-18 NEET Breakdown by Top 25 Wards**

29	SUT - St Helier	14.6%
25	SUT - Wandle Valley	12.6%
22	SUT - Sutton Central	11.1%
15	SUT - Beddington North	7.5%
13	SUT - Beddington South	6.5%
12	SUT - Wallington South	6.0%
12	SUT - Stonecot	6.0%
10	SUT - The Wrythe	5.0%
9	SUT - Carshalton South and Clockhouse	4.5%
8	SUT - Worcester Park	4.0%
8	SUT - Sutton North	4.0%
7	SUT - Sutton West	3.5%
7	SUT - Cheam	3.5%
6	SUT - Wallington North	3.0%
6	SUT - Carshalton Central	3.0%
5	SUT - Belmont	2.5%
3	SUT - Sutton South	1.5%
2	SUT - Nonsuch	1.0%

**19 year Old NEET Breakdown by Top 25 Wards**

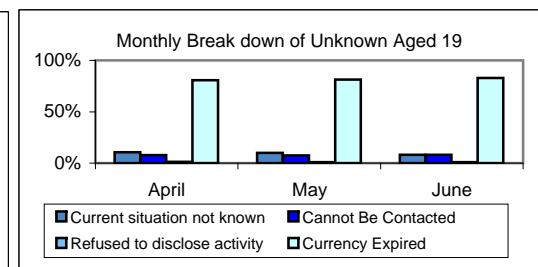
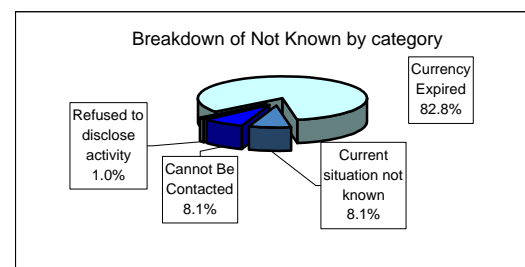
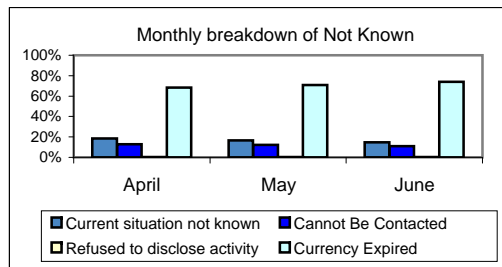
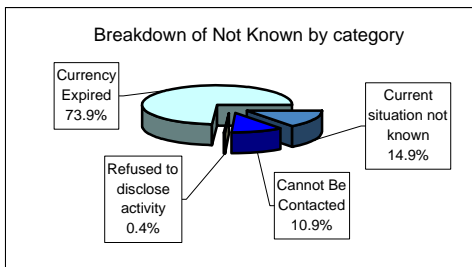
13	SUT - St Helier	15.7%
8	SUT - Beddington South	9.6%
7	SUT - Stonecot	8.4%
6	SUT - Wandle Valley	7.2%
5	SUT - Sutton Central	6.0%
5	SUT - The Wrythe	6.0%
5	SUT - Carshalton South and Clockhouse	6.0%
5	SUT - Wallington North	6.0%
4	SUT - Beddington North	4.8%
4	SUT - Wallington South	4.8%
4	SUT - Sutton North	4.8%
3	SUT - Worcester Park	3.6%
3	SUT - Sutton West	3.6%
3	SUT - Cheam	3.6%
3	SUT - Carshalton Central	3.6%
3	SUT - Nonsuch	3.6%
2	SUT - Sutton South	2.4%

**16-18 Not Known Breakdown**

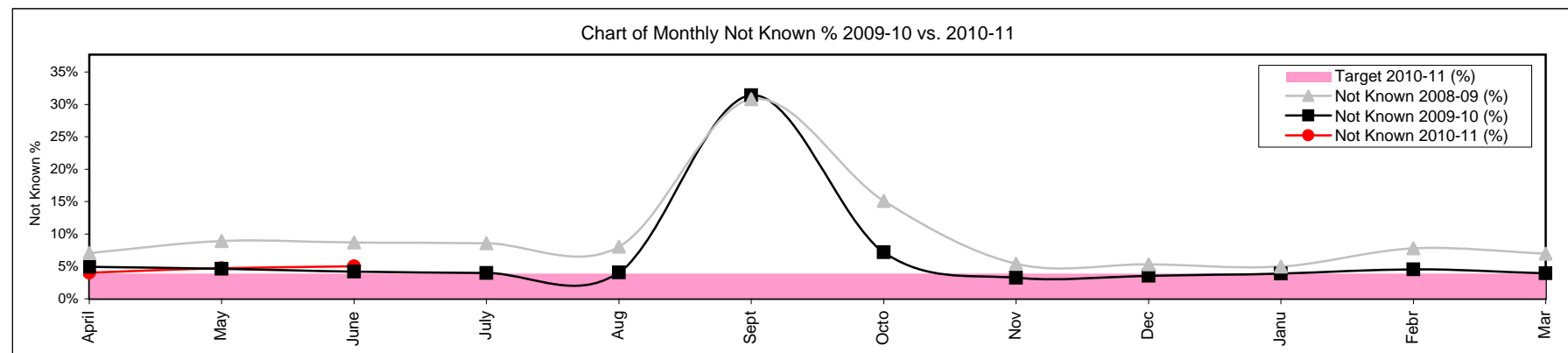
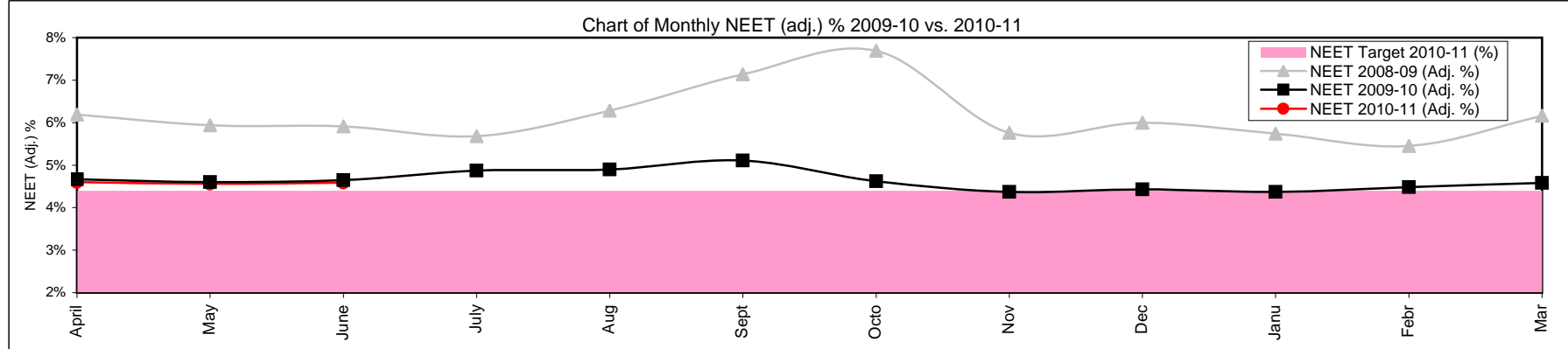
276	Not Known	5.0%	+0.3%	↑
41	Current situation not known	14.9%	-1.6%	↓
30	Cannot Be Contacted	10.9%	-1.5%	↓
1	Refused to disclose activity	0.4%	-0%	↓
204	Currency Expired	73.9%	+3.1%	↑

**19 Year Old Not Known Breakdown**

419	Not Known	20.9%	-0.1%	↓
34	Current situation not known	8.1%	-2%	↓
34	Cannot Be Contacted	8.1%	+0.6%	↑
4	Refused to disclose activity	1.0%	+0%	↑
347	Currency Expired	82.8%	+1.4%	↑



16-18 NEET Yearly Comparison	April	May	June	July	August	September	October	November	December	January	February	March
16-18 Cohort 2009-10	5842	5655	5457	5270	5085	7438	6964	6713	6450	6281	6123	5974
16-18 Cohort 2010-11	5786	5650	5482	0	0	0	0	0	0	0	0	0
EET 2009-10	5323	5177	5004	4828	4655	4899	6189	6220	5959	5795	5625	5517
EET 2010-11	5339	5176	5004	0	0	0	0	0	0	0	0	0
NEET 2009-10	226	210	217	226	219	200	272	271	259	240	220	222
NEET 2010-11	214	205	199	0	0	0	0	0	0	0	0	0
NEET 2009-10 (Adj. %)	4.7%	4.6%	4.7%	4.9%	4.9%	5.1%	4.6%	4.4%	4.4%	4.4%	4.5%	4.6%
NEET 2010-11 (Adj. %)	4.60%	4.56%	4.59%	0.00%	0.00%	0.00%	0.00%	0.00%	0.00%	0.00%	0.00%	0.00%
<b>NEET Target 2010-11 (%)</b>	<b>4.40%</b>	<b>4.40%</b>	<b>4.40%</b>	<b>4.40%</b>	<b>4.40%</b>	<b>4.40%</b>	<b>4.40%</b>	<b>4.40%</b>	<b>4.40%</b>	<b>4.40%</b>	<b>4.40%</b>	<b>4.40%</b>
Not Known 2009-10	288	263	230	211	207	2336	500	219	230	245	278	235
Not Known 2010-11	233	267	276	0	0	0	0	0	0	0	0	0
Not Known 2009-10 (%)	4.93%	4.65%	4.21%	4.00%	4.07%	31.41%	7.18%	3.26%	3.57%	3.90%	4.54%	3.93%
Not Known 2010-11 (%)	4.03%	4.73%	5.03%	0.00%	0.00%	0.00%	0.00%	0.00%	0.00%	0.00%	0.00%	0.00%
<b>Target 2010-11 (%)</b>	<b>3.90%</b>	<b>3.90%</b>	<b>3.90%</b>	<b>3.90%</b>	<b>3.90%</b>	<b>3.90%</b>	<b>3.90%</b>	<b>3.90%</b>	<b>3.90%</b>	<b>3.90%</b>	<b>3.90%</b>	<b>3.90%</b>



## Monthly NEET and Not Known Cohort Analysis

### Definitions

#### 1 Introduction

- 1.1 The data within this report has been compiled from the Connexions South London Client Caseload Information Systems Management Information return to the Department for Education for 2010/11.

#### 2 Definitions

- 2.1 The Not in Education, Employment or Training (NEET) cohort is defined by the following destinations:

- Any unemployed category
- Personal Development Opportunity
- Personal Development Opportunity – Waged
- Supporting Family Young Carer
- Supporting Family – Teenage Parent
- Not Available - Illness
- Pregnancy – (11 weeks to due date)
- Not Available - Religious or Cultural grounds
- Never Economically Active
- Voluntary work
- New Deal Gateway
- Not available - Other reason

## 2.2 The Not Known cohort is defined by the following destinations:

- Current situation Not Known
- Cannot be contacted
- Refused to provide information
- Currency expired

## 2.3 The Vulnerable group categories are defined as the follow target groups:

- LDD
- Teenage Parent
- Pregnancy
- Supervised by YOTS
- Care Leaver
- Substance misuse
- Young Carer
- Refugee/Asylum Seeker
- Teenage Father
- Looked After/In Care

## 2.4 The NEET adjusted percentage and numbers are calculated using the following formula:

- DfE research determined that from those who lapsed from EET 92% were likely to still be EET and so the remaining 8% would be counted as NEET. For those who had lapsed from NEET, 58% were likely to have re-joined NEET and so the remaining 42% would be EET.
- This calculation is then applied to those who have lapsed to produce the adjusted NEET percentage.
- The adjusted lapsed figures are added back into the EET and NEET cohorts, the numbers are re-calculated (NEET/EET + NEET).