

## May 2010 NEET and Not Known Cohort Analysis

The data contained within this report has been compiled from the Connexions South London Client Caseload Information System (CCIS) Management Information return for May 2010.

The Report provides an analysis of young people aged 16-18 and 19 years within the NEET group, detailed by the following categories :

- Gender
- Age
- Support Level
- Ethnic Origin
- Vulnerable Group Characteristics
- Top 25 Wards
- Not Known

The 16-18 NEET Group has also been analysed to show the following :

- Availability to the Labour Market
- Non availability to the Labour Market
- NEET Joiners & leavers

## Overall

### 16-18

The Adjusted NEET figure for ages 16-18 in Richmond in May 2010 is 3.4%, which is a 0.2% decrease from April 2010. The actual number of NEET young people within Richmond is 90 which is a decrease in 9 young people from April 2010 total of 99. The Not Known percentage for Richmond in May 2010 for this age range is 2.6% or a total of 77 young people. This is a decrease of 0.1% from April 2010 where 82 young people were Not Known.

### 19 Year Olds

The Adjusted NEET figure for 19 year olds in Richmond in May 2010 is 4.3% which shows a 1.3% increase from April 2010. The Not Known percentage for 19 year olds in Richmond in May 2010 is 17.4% or 163 young people. This is a increase of 7.8% from April 2010 where 96 young people were described as being Not Known.

## Gender, Age & Support Level

### 16-18

The 16-18 NEET totals for females in Richmond are the same than their male counterparts with 45 (50%) young people each. The majority of 16-18 NEET are 17 and 18 years old with 54.4% and 38.9% respectively. 16 year olds only make up 6.7% of the NEET group in May 2010. The majority of NEET in this age range were described as having a support level of "Intensive" or "Supported" with totals of 39 (43.3%) and 38 (42.2%) each. Only 14.4% (13) of 16-18 year old NEET were classified as having "Minimum" needs.

### 19 Year Olds

The 19 year old NEET in Richmond are distributed contrastingly in terms of gender with totals of 10 (40%) and 15 (60%) for female and male young people respectively. The majority of NEET in this age range were described as having a support level of "Intensive and "Supported" with totals of 14 (56%) and 10 (40%). This month only one 19 year old young person was described as having "Minimum" needs.

## Ethnicity

### 16-18

The majority of 16-18 NEET in Richmond in May 2010 have an ethnic group of White with 74 young people (82.2%). The other largest total are from the Mixed and Black ethnic groups with 6 (6.7%) and 4 (4.4%) respectively. The other ethnic groups make up 6.6% (6) of the NEET young people in this age range.

### 19 Year Olds

The majority of 19 year old NEET in Richmond in May 2010 have an ethnic group of White with 23 young people (92%). The other largest total comes from the Mixed and Asians ethnic group each with 1 (4%) young person.

## Vulnerable Groups

### 16-18

The highest total of NEET young people having a vulnerable group characteristic are those described as having LDD with 14.4% (13). The other largest vulnerable group percentages of NEET young people in this age range are described as Supervised by YOT with 3 (3.3%) young people.

### 19 Year Olds

The highest total of NEET young people having a vulnerable group characteristic are those described as looked after or in care with 8% (2).

## 16-18 NEET Availability

### Available

In May 2010, 86.7% of the total 16-18 NEET group are available to the labour market. Within this available group, 62 (79.5%) young people are described as seeking employment, education and training. The other largest percentage is 9% (7) for those described as NEET Other PDOs.

### Not Available

In May 2010, 13.3% of the total 16-18 NEET group are not available to the labour market. Within this unavailable group, 8 (66.7%) are described as NEET Teenage parents..

## NEET Joiners & Leavers

### Joiners

Of the 13 young people who joined the Richmond NEET group in May 2010, 30.8% (4) are from education and 30.8% (4) are from Government Supported Training destinations. The Other largest number of young people joining the NEET group this month came from currency re-established with 23.1% (3).

### Leavers

Of the 11 young people who left the Richmond NEET group in May 2010, 25% (4) are each going to education and employment. The other largest percentage of the NEET leavers are going to expired destinations with 50% (8) of the total young people leaving NEET in May.

## NEET Ward Analysis

### 16-18

The largest number of 16-18 NEET in Richmond in May 2010 are from Hampton North ward with 16.7% (15) of the total NEET group.

### 19 Year Olds

The largest number of 19 year old NEET in Richmond in May 2010 are from Hampton North Ham, Petersham & Richmond Riverside and Heathfield ward each with 12% (3) of the total 19 year old NEET group.

## Not Known Analysis

### 16-18

Out of the 77 Not Known, the largest proportion have expired destinations with 72.7% (56). The other largest percentages are those with destination described as current situation not known with 23.4% (18) young people.

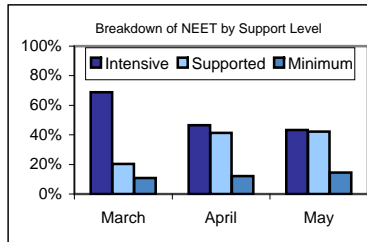
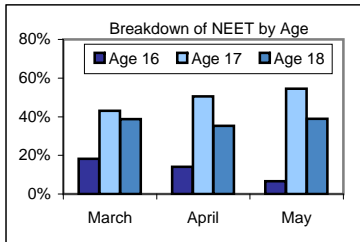
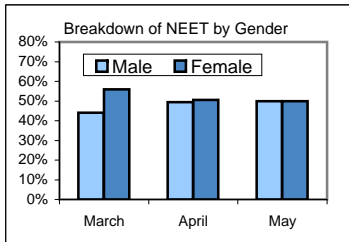
### 19 Year Olds

The breakdown of the 163 Not Known for the 19 year olds in Richmond in May show the largest proportion have expired destinations with 84.7% (138). The other largest percentage are those with destinations described as cannot be contacted with 12.3% (20).

### NEET Aged 16-18

The Adjusted NEET Figure is 3.4% (101 Adj).

The unadjusted NEET Total is 90 and the Not Known is 2.58% (77)



#### Gender

50.0% (45) are Male  
50.0% (45) are Female

#### Age

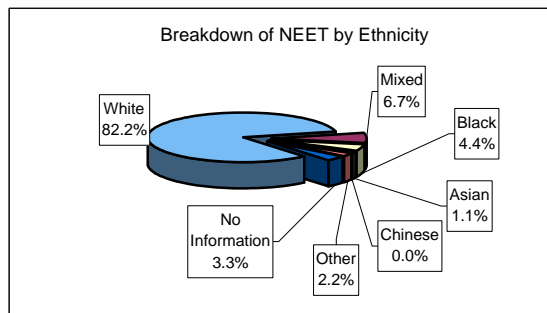
6.7% (6) are aged 16  
54.4% (49) are aged 17  
38.9% (35) are aged 18

#### Support level

14.4% (13) Minimum  
42.2% (38) Supported  
43.3% (39) Intensive

#### Ethnic Origin

74	White	82.2%
6	Mixed	6.7%
4	Black	4.4%
1	Asian	1.1%
0	Chinese	0.0%
2	Other	2.2%
3	No Information	3.3%



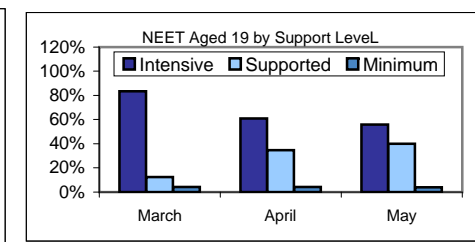
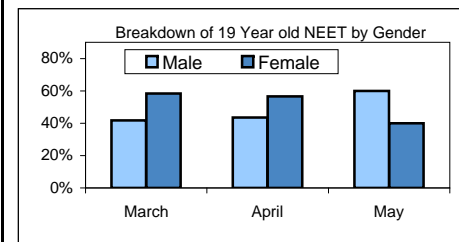
#### Vulnerable Group Characteristics

13	LDD	14.4%	+3.3% ↑
4	Teenage Mother	4.4%	+1.4% ↑
0	Parent	0.0%	+0% ⇄
1	Pregnancy	1.1%	+1.1% ↑
3	Supervised by YOTS	3.3%	-0.7% ↓
0	Care Leaver	0.0%	+0% ⇄
0	Substance misuse	0.0%	+0% ⇄
1	Young Carer	1.1%	+0.1% ↑
0	Refugee/Asylum Seeker	0.0%	+0% ⇄
0	Teenage Father	0.0%	+0% ⇄
1	Looked After/InCare	1.1%	+1.1% ↑

### NEET Aged 19

The Adjusted NEET Figure is 4.3% (39 Adj).

The unadjusted NEET Total is 25 and the Not Known is 17.43% (163)



#### Gender

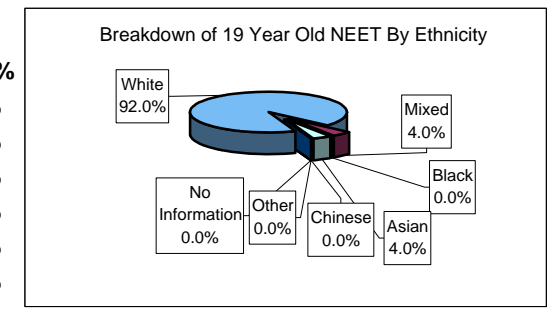
60.0% (15) are Male  
40.0% (10) are Female

#### Support level

4.0% (1) Minimum  
40.0% (10) Supported  
56.0% (14) Intensive

#### Ethnic Origin

23	White	92.0%
1	Mixed	4.0%
0	Black	0.0%
1	Asian	4.0%
0	Chinese	0.0%
0	Other	0.0%
0	No Information	0.0%



#### 19 year Old Vulnerable Group Characteristics

1	LDD	4.0%	-0.4% ↓
1	Teenage Mother	4.0%	-4.7% ↓
0	Parent	0.0%	+0% ⇄
0	Pregnancy	0.0%	+0% ⇄
1	Supervised by YOTS	4.0%	-0.4% ↓
1	Care Leaver	4.0%	-0.4% ↓
0	Substance misuse	0.0%	+0% ⇄
0	Young Carer	0.0%	+0% ⇄
0	Refugee/Asylum Seeker	0.0%	+0% ⇄
0	Teenage Father	0.0%	+0% ⇄
2	Looked After/InCare	8.0%	-0.7% ↓

## NEET Aged 16-18

### Availability

86.7% (78) of the NEET group are available to the labour market.

62	Seeking employment, education or training	79.5%	-1% ↓
0	Waged PDOs	0.0%	+0% ⇄
7	Other PDOs	9.0%	+4.4% ↑
1	Not yet ready for work or learning	1.3%	+0.1% ↑
6	Awaiting an E2E place	7.7%	-0.4% ↓
1	Awaiting sub level 2 place	1.3%	+1.3% ↑
1	Awaiting level 2 place	1.3%	-1% ↓
0	Awaiting level 3+ place	0.0%	-1.2% ↓
0	Start Date agreed	0.0%	-2.3% ↓
0	Activity Agreement	0.0%	+0% ⇄
0	New Deal Gateway	0.0%	+0% ⇄

13.3% (12) are not available to the labour market.

0	Young carers	0.0%	+0% ⇄
8	Teenage parents	66.7%	+8.3% ↑
2	Illness	16.7%	-8.3% ↓
2	Pregnancy	16.7%	+0% ⇄
0	Religious grounds	0.0%	+0% ⇄
0	Unlikely to be economically active	0.0%	+0% ⇄
0	Other reason	0.0%	+0% ⇄

0	Other (not EET or NEET)	0.0%	-2% ↓
0	Custody	0.0%	-2% ↓
0	Refugees/Asylum seekers	0.0%	+0% ⇄

### NEET Joiners

13 young people joined the NEET group in May

4	From Education	30.8%	+5.8% ↑
4	From Employment	30.8%	+15.8% ↓
1	From Government supported training	7.7%	-27.3% ⇄
0	From NEET in other area	0.0%	+0% ⇄
1	From Other (inc custodial sentence)	7.7%	-12.3% ↓
3	From Currency re-established	23.1%	+18.1% ↑

### NEET Leavers

16 young people left the NEET group in May

0	Into Education	0.0%	+0% ⇄
4	Into Employment	25.0%	-11.4% ↓
4	Into Government Supported Training	25.0%	+25% ↑
0	Into NEET in other area	0.0%	+0% ⇄
0	Into Custodial Sentence	0.0%	+0% ⇄
0	Into Moved Away	0.0%	-9.1% ↓
0	Into Cannot Be Contacted	0.0%	+0% ⇄
0	Into Refused to disclose activity	0.0%	+0% ⇄
8	Into Currency Expired	50.0%	-4.6% ↓
0	Into Unknown Activity	0.0%	+0% ⇄
0	Into Other Reason	0.0%	+0% ⇄

**16-18 NEET Breakdown by Top 25 Wards**

15	RIC - Hampton North	16.7%
9	RIC - West Twickenham	10.0%
8	RIC - Ham, Petersham and Richmond Riverside	8.9%
7	RIC - Hampton	7.8%
6	RIC - South Richmond	6.7%
6	RIC - Fulwell and Hampton Hill	6.7%
6	RIC - Whitton	6.7%
6	RIC - Twickenham Riverside	6.7%
5	RIC - Hampton Wick	5.6%
5	RIC - East Sheen	5.6%
4	RIC - St Margarets and North Twickenham	4.4%
4	RIC - Heathfield	4.4%
3	RIC - Teddington	3.3%
3	RIC - Kew	3.3%
2	RIC - Barnes	2.2%
1	RIC - Mortlake and Barnes Common	1.1%

**19 year Old NEET Breakdown by Top 25 Wards**

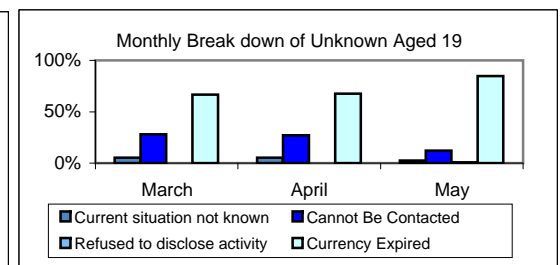
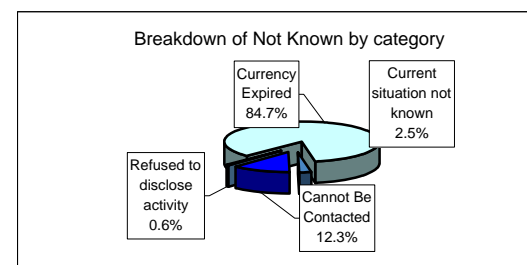
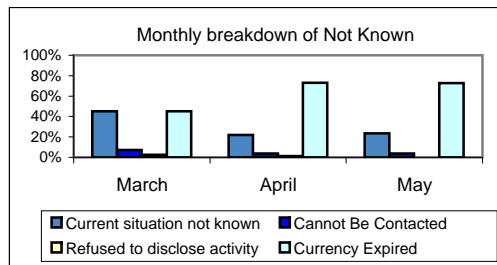
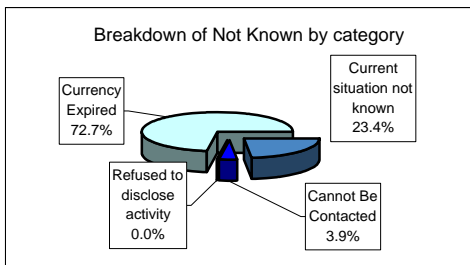
3	RIC - Hampton North	12.0%
3	RIC - Ham, Petersham and Richmond Riverside	12.0%
3	RIC - Heathfield	12.0%
2	RIC - South Richmond	8.0%
2	RIC - Fulwell and Hampton Hill	8.0%
2	RIC - Whitton	8.0%
2	RIC - Twickenham Riverside	8.0%
2	RIC - Hampton Wick	8.0%
2	RIC - Teddington	8.0%
1	RIC - Hampton	4.0%
1	RIC - St Margarets and North Twickenham	4.0%
1	RIC - Barnes	4.0%
1	RIC - Mortlake and Barnes Common	4.0%

**16-18 Not Known Breakdown**

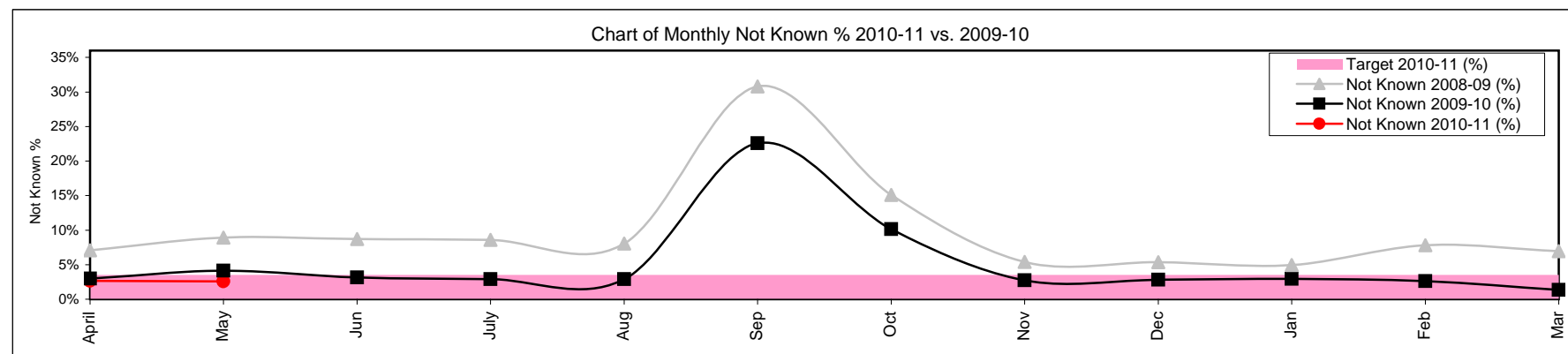
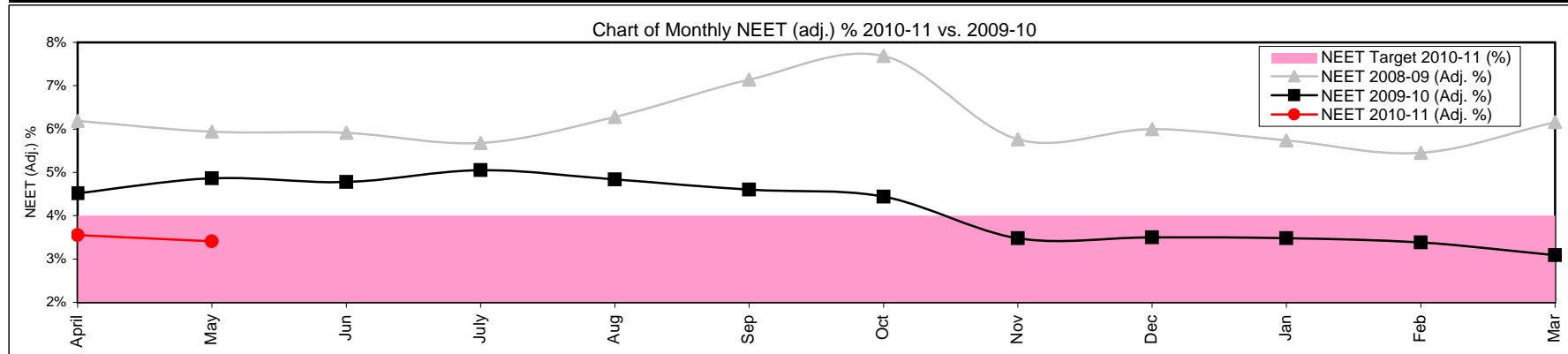
77	Not Known	2.6%	-0.1%	↓
18	Current situation not known	23.4%	+1.4%	↑
3	Cannot Be Contacted	3.9%	+0.2%	↑
0	Refused to disclose activity	0.0%	-1.2%	↓
56	Currency Expired	72.7%	-0.4%	↓

**19 Year Old Not Known Breakdown**

163	Not Known	17.4%	+7.8%	↑
4	Current situation not known	2.5%	-2.8%	↓
20	Cannot Be Contacted	12.3%	-14.8%	↓
1	Refused to disclose activity	0.6%	+0.6%	↑
138	Currency Expired	84.7%	+17%	↑



16-18 NEET Yearly Comparison	April	May	June	July	August	September	October	November	December	January	February	March
16-18 Cohort 2009-10	2773	2684	2580	2502	2423	3472	3007	3421	3343	3274	3196	3167
16-18 Cohort 2010-11	3092	2988	0	0	0	0	0	0	0	0	0	0
EET 2009-10	2573	2454	2386	2309	2244	2577	2597	3218	3144	3077	3011	3030
EET 2010-11	2909	2821	0	0	0	0	0	0	0	0	0	0
NEET 2009-10	115	118	111	118	107	109	103	106	102	98	99	93
NEET 2010-11	99	90	0	0	0	0	0	0	0	0	0	0
NEET 2009-10 (Adj. %)	4.52%	4.86%	4.78%	5.05%	4.84%	4.60%	4.44%	3.48%	3.50%	3.48%	3.38%	3.09%
NEET 2010-11 (Adj. %)	3.55%	3.41%	0.00%	0.00%	0.00%	0.00%	0.00%	0.00%	0.00%	0.00%	0.00%	0.00%
<b>NEET Target 2010-11 (%)</b>	<b>4.00%</b>	<b>4.00%</b>	<b>4.00%</b>	<b>4.00%</b>	<b>4.00%</b>	<b>4.00%</b>	<b>4.00%</b>	<b>4.00%</b>	<b>4.00%</b>	<b>4.00%</b>	<b>4.00%</b>	<b>4.00%</b>
Not Known 2009-10	83	111	81	73	70	784	305	94	94	97	84	42
Not Known 2010-11	82	77	0	0	0	0	0	0	0	0	0	0
Not Known 2009-10 (%)	2.99%	4.14%	3.14%	2.92%	2.89%	22.58%	10.14%	2.75%	2.81%	2.96%	2.63%	1.33%
Not Known 2010-11 (%)	2.65%	2.58%	0.00%	0.00%	0.00%	0.00%	0.00%	0.00%	0.00%	0.00%	0.00%	0.00%
<b>Target 2010-11 (%)</b>	<b>3.50%</b>	<b>3.50%</b>	<b>3.50%</b>	<b>3.50%</b>	<b>3.50%</b>	<b>3.50%</b>	<b>3.50%</b>	<b>3.50%</b>	<b>3.50%</b>	<b>3.50%</b>	<b>3.50%</b>	<b>3.50%</b>



## Monthly NEET and Not Known Cohort Analysis

### Definitions

#### 1 Introduction

- 1.1 The data within this report has been compiled from the Connexions South London Client Caseload Information Systems Management Information return to the Department for Education for 2010/11.

#### 2 Definitions

- 2.1 The Not in Education, Employment or Training (NEET) cohort is defined by the following destinations:

- Any unemployed category
- Personal Development Opportunity
- Personal Development Opportunity – Waged
- Supporting Family Young Carer
- Supporting Family – Teenage Parent
- Not Available - Illness
- Pregnancy – (11 weeks to due date)
- Not Available - Religious or Cultural grounds
- Never Economically Active
- Voluntary work
- New Deal Gateway
- Not available - Other reason

## 2.2 The Not Known cohort is defined by the following destinations:

- Current situation Not Known
- Cannot be contacted
- Refused to provide information
- Currency expired

## 2.3 The Vulnerable group categories are defined as the follow target groups:

- LDD
- Teenage Parent
- Pregnancy
- Supervised by YOTS
- Care Leaver
- Substance misuse
- Young Carer
- Refugee/Asylum Seeker
- Teenage Father
- Looked After/In Care

## 2.4 The NEET adjusted percentage and numbers are calculated using the following formula:

- DfE research determined that from those who lapsed from EET 92% were likely to still be EET and so the remaining 8% would be counted as NEET. For those who had lapsed from NEET, 58% were likely to have re-joined NEET and so the remaining 42% would be EET.
- This calculation is then applied to those who have lapsed to produce the adjusted NEET percentage.
- The adjusted lapsed figures are added back into the EET and NEET cohorts, the numbers are re-calculated (NEET/EET + NEET).