

April 2010 NEET and Not Known Cohort Analysis

The data contained within this report has been compiled from the Connexions South London Client Caseload Information System (CCIS) Management Information return for April 2010.

The Report provides an analysis of young people aged 16-18 and 19 years within the NEET group, detailed by the following categories :

- Gender
- Age
- Support Level
- Ethnic Origin
- Vulnerable Group Characteristics
- Top 25 Wards
- Not Known

The 16-18 NEET Group has also been analysed to show the following :

- Availability to the Labour Market
- Non availability to the Labour Market
- NEET Joiners & leavers

Overall

16-18

The Adjusted NEET figure for ages 16-18 in Richmond in April 2010 is 3.6%, which is a 0.5% increase from March 2010. The actual number of NEET young people within Richmond is 99 which is a decrease in 6 young people from March 2010 total of 93. The Not Known percentage for Richmond in April 2010 for this age range is 2.7% or a total of 82 young people. This is an increase of 1.4% from March 2010 where 42 young people were Not Known.

19 Year Olds

The Adjusted NEET figure for 19 year olds in Richmond in April 2010 is 3% which shows no change from March 2010. The Not Known percentage for 19 year olds in Richmond in April 2010 is 9.6% or 96 young people. This is an increase of 0.2% from March 2010 where 93 young people were described as being Not Known.

Gender, Age & Support Level

16-18

The 16-18 NEET totals for females in Richmond are higher than their male counterparts with 50 (50.5%) young people compared to 49 (49.5%). The majority of 16-18 NEET are 17 and 18 years old with 50.5% and 35.4% respectively. 16 year olds only make up 14.1% of the NEET group in April 2010. The majority of NEET in this age range were described as having a support level of "Intensive" or "Supported" with totals of 46 (46.5%) and 41 (41.4%) each. Only 12.1% (12) of 16-18 year old NEET were classified as having "Intensive" needs.

19 Year Olds

The 19 year old NEET in Richmond are distributed similarly in terms of gender with totals of 13 (56.5%) and 10 (43.5%) for female and male young people respectively. The majority of NEET in this age range were described as having a support level of "Intensive and "Supported" with totals of 14 (60.9%) and 8 (34.8%). This month only one 19 year old young person was described as having "Minimum" needs.

Ethnicity

16-18

The majority of 16-18 NEET in Richmond in April 2010 have an ethnicity group of White with 84 young people (84.9%). The other largest total are from the Mixed and Black ethnic groups with 5 (5.1%) and 3 (3%) respectively. The other ethnic groups make up 7% (7) of the NEET young people in this age range.

19 Year Olds

The majority of 19 year old NEET in Richmond in April 2010 have an ethnicity group of White with 20 young people (87%). The other largest total comes from the Asian ethnic group with 2 (8.7%) young people.

Vulnerable Groups

16-18

The highest total of NEET young people having a vulnerable group characteristic are those described as having LDD with 11.1% (11). The other largest vulnerable group percentages of NEET young people in this age range are described as Supervised by YOT with 4 (4%) young people.

19 Year Olds

The highest total of NEET young people having a vulnerable group characteristic are those described as Teenage mothers with 8.7% (2).

16-18 NEET Availability

Available

In April 2010, 87.9% of the total 16-18 NEET group are available to the labour market. Within this available group, 70 (80.5%) young people are described as seeking employment, education and training. The other largest percentage is 8.1% (7) for those described as NEET awaiting an E2E place.

Not Available

In April 2010, 12.1% of the total 16-18 NEET group are not available to the labour market. Within this unavailable group, 7 (58.3%) are described as NEET Teenage parents..

NEET Joiners & Leavers

Joiners

Of the 20 young people who joined the Richmond NEET group in April 2010, 25% (5) are from education and 35% (7) are from Government Supported Training destinations. The Other largest number of young people joining the NEET group this month came from Other (inc. custodial sentence) with 20% (4).

Leavers

Of the 11 young people who left the Richmond NEET group in April 2010, 36.4% (4) are going to employment. The other largest percentage of the NEET leavers are going to expired destinations with 54.6% (6) of the total young people leaving NEET in April.

NEET Ward Analysis

16-18

The largest number of 16-18 NEET in Richmond in April 2010 are from Hampton North ward with 15.2% (15) of the total NEET group.

19 Year Olds

The largest number of 19 year old NEET in Richmond in April 2010 are from Hampton North and Heathfield ward each with 13% (3) of the total 19 year old NEET group.

Not Known Analysis

16-18

Out of the 82 Not Known, the largest proportion have expired destinations with 73.2% (60). The other largest percentages are those with destination described as current situation not known with 22% (18) young people.

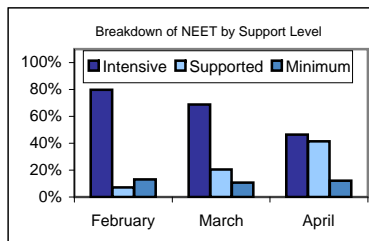
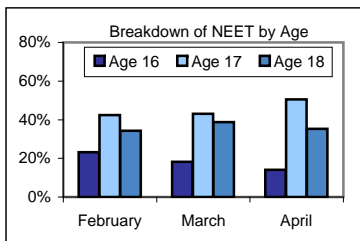
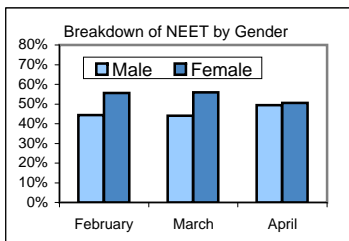
19 Year Olds

The breakdown of the 96 Not Known for the 19 year olds in Richmond in April show the largest proportion have expired destinations with 67.7% (65). The other largest percentage are those with destinations described as cannot be contacted with 27.1% (26).

NEET Aged 16-18

The Adjusted NEET Figure is 3.6% (109 Adj).

The unadjusted NEET Total is 99 and the Not Known is 2.65% (82)



Gender

49.5% (49) are Male
50.5% (50) are Female

Age

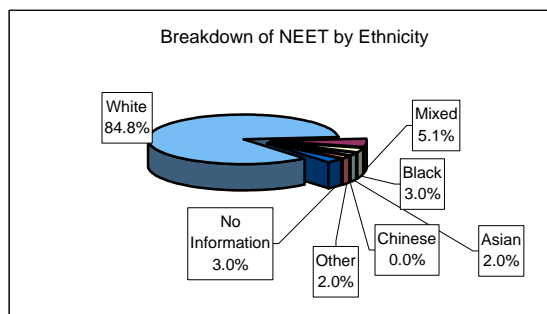
14.1% (14) are aged 16
50.5% (50) are aged 17
35.4% (35) are aged 18

Support level

12.1% (12) Minimum
41.4% (41) Supported
46.5% (46) Intensive

Ethnic Origin

84	White	84.9%
5	Mixed	5.1%
3	Black	3.0%
2	Asian	2.0%
0	Chinese	0.0%
2	Other	2.0%
3	No Information	3.0%



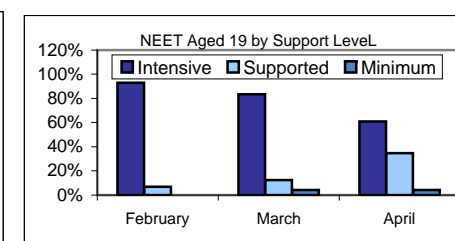
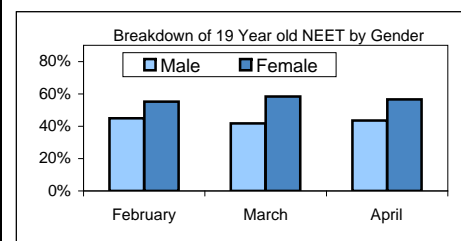
Vulnerable Group Characteristics

11	LDD	11.1%	-0.7% ↓
3	Teenage Mother	3.0%	-0.2% ↓
0	Parent	0.0%	+0% ⇄
0	Pregnancy	0.0%	+0% ⇄
4	Supervised by YOTS	4.0%	-2.4% ↓
0	Care Leaver	0.0%	+0% ⇄
0	Substance misuse	0.0%	+0% ⇄
1	Young Carer	1.0%	-0.1% ↓
0	Refugee/Asylum Seeker	0.0%	+0% ⇄
0	Teenage Father	0.0%	+0% ⇄
0	Looked After/InCare	0.0%	+0% ⇄

NEET Aged 19

The Adjusted NEET Figure is 3.0% (29 Adj).

The unadjusted NEET Total is 23 and the Not Known is 9.62% (96)



Gender

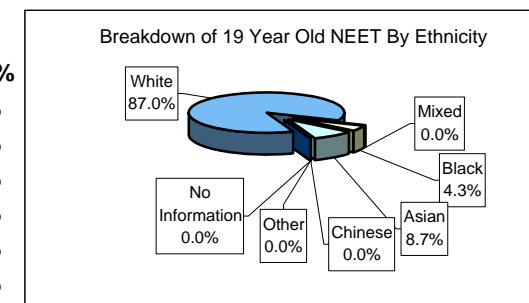
43.5% (10) are Male
56.5% (13) are Female

Support level

4.4% (1) Minimum
34.8% (8) Supported
60.9% (14) Intensive

Ethnic Origin

20	White	87.0%
0	Mixed	0.0%
1	Black	4.4%
2	Asian	8.7%
0	Chinese	0.0%
0	Other	0.0%
0	No Information	0.0%



19 year Old Vulnerable Group Characteristics

1	LDD	4.4%	-4% ↓
2	Teenage Mother	8.7%	+0.4% ↑
0	Parent	0.0%	+0% ⇄
0	Pregnancy	0.0%	+0% ⇄
1	Supervised by YOTS	4.4%	-4% ↓
1	Care Leaver	4.4%	+0.2% ↑
0	Substance misuse	0.0%	+0% ⇄
0	Young Carer	0.0%	+0% ⇄
0	Refugee/Asylum Seeker	0.0%	+0% ⇄
0	Teenage Father	0.0%	-4.2% ↓
2	Looked After/InCare	8.7%	+0.4% ↑

NEET Aged 16-18

Availability

87.9% (87) of the NEET group are available to the labour market.

70	Seeking employment, education or training	80.5%	+4.1% ↑
0	Waged PDOs	0.0%	+0% ⇄
4	Other PDOs	4.6%	+0.7% ↑
1	Not yet ready for work or learning	1.2%	-0.2% ↓
7	Awaiting an E2E place	8.1%	-1.2% ↓
0	Awaiting sub level 2 place	0.0%	+0% ⇄
2	Awaiting level 2 place	2.3%	-0.3% ↓
1	Awaiting level 3+ place	1.2%	-0.2% ↓
2	Start Date agreed	2.3%	-1.7% ↓
0	Activity Agreement	0.0%	+0% ⇄
0	New Deal Gateway	0.0%	-1.3% ↓

12.1% (12) are not available to the labour market.

0	Young carers	0.0%	+0% ⇄
7	Teenage parents	58.3%	-0.5% ↓
3	Illness	25.0%	+1.5% ↑
2	Pregnancy	16.7%	+4.9% ↑
0	Religious grounds	0.0%	+0% ⇄
0	Unlikely to be economically active	0.0%	-5.9% ↓
0	Other reason	0.0%	+0% ⇄

2	Other (not EET or NEET)	2.0%	-0.1% ↓
2	Custody	2.0%	-0.1% ↓
0	Refugees/Asylum seekers	0.0%	+0% ⇄

NEET Joiners

20 young people joined the NEET group in April

5	From Education	25.0%	-39.3% ↓
3	From Employment	15.0%	+15% ↑
7	From Government supported training	35.0%	+27.9% ⇄
0	From NEET in other area	0.0%	+0% ⇄
4	From Other (inc custodial sentence)	20.0%	-8.6% ↓
1	From Currency re-established	5.0%	+5% ↑

NEET Leavers

11 young people left the NEET group in April

0	Into Education	0.0%	-4.6% ↓
4	Into Employment	36.4%	+0% ⇄
0	Into Government Supported Training	0.0%	-40.9% ↓
0	Into NEET in other area	0.0%	+0% ⇄
0	Into Custodial Sentence	0.0%	+0% ⇄
1	Into Moved Away	9.1%	+4.5% ↑
0	Into Cannot Be Contacted	0.0%	+0% ⇄
0	Into Refused to disclose activity	0.0%	+0% ⇄
6	Into Currency Expired	54.6%	+40.9% ↑
0	Into Unknown Activity	0.0%	+0% ⇄
0	Into Other Reason	0.0%	+0% ⇄

16-18 NEET Breakdown by Top 25 Wards

15	RIC - Hampton North	15.2%
10	RIC - South Richmond	10.1%
10	RIC - Ham, Petersham and Richmond Riverside	10.1%
9	RIC - Hampton	9.1%
8	RIC - West Twickenham	8.1%
8	RIC - Hampton Wick	8.1%
7	RIC - Whitton	7.1%
5	RIC - Teddington	5.1%
5	RIC - Fulwell and Hampton Hill	5.1%
5	RIC - East Sheen	5.1%
4	RIC - Barnes	4.0%
4	RIC - Kew	4.0%
3	RIC - St Margarets and North Twickenham	3.0%
3	RIC - Heathfield	3.0%
2	RIC - Twickenham Riverside	2.0%
1	RIC - Mortlake and Barnes Common	1.0%

19 year Old NEET Breakdown by Top 25 Wards

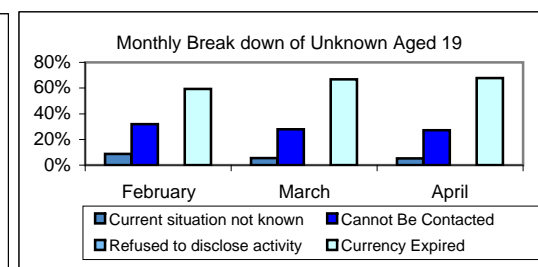
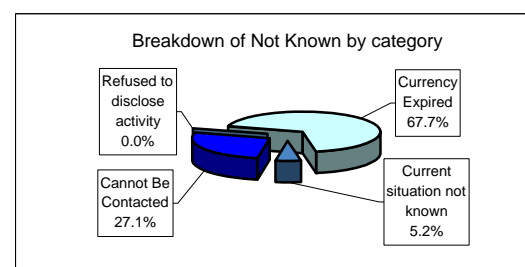
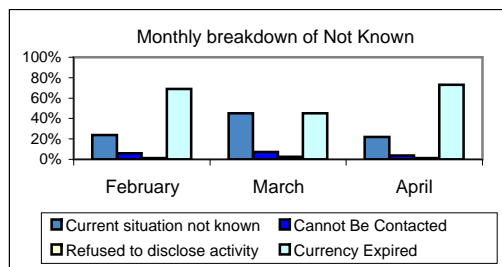
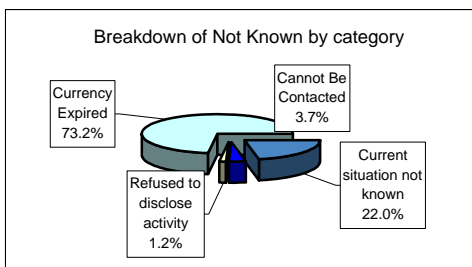
3	RIC - Hampton North	13.0%
3	RIC - Heathfield	13.0%
2	RIC - Ham, Petersham and Richmond Riverside	8.7%
2	RIC - Hampton	8.7%
2	RIC - Whitton	8.7%
2	RIC - Fulwell and Hampton Hill	8.7%
2	RIC - Barnes	8.7%
2	RIC - Twickenham Riverside	8.7%
1	RIC - South Richmond	4.4%
1	RIC - Hampton Wick	4.4%
1	RIC - Kew	4.4%
1	RIC - Mortlake and Barnes Common	4.4%
1	RIC - South Twickenham	4.4%

16-18 Not Known Breakdown

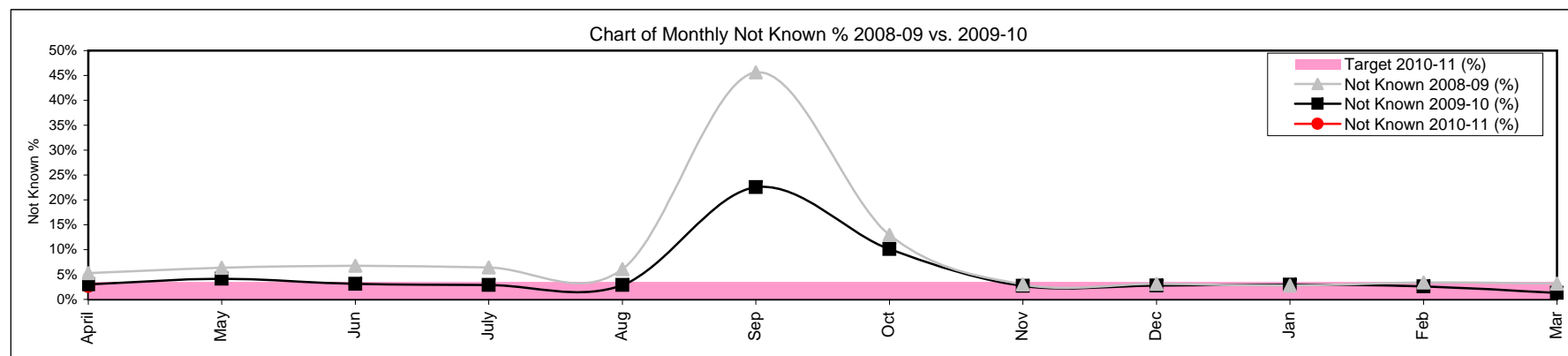
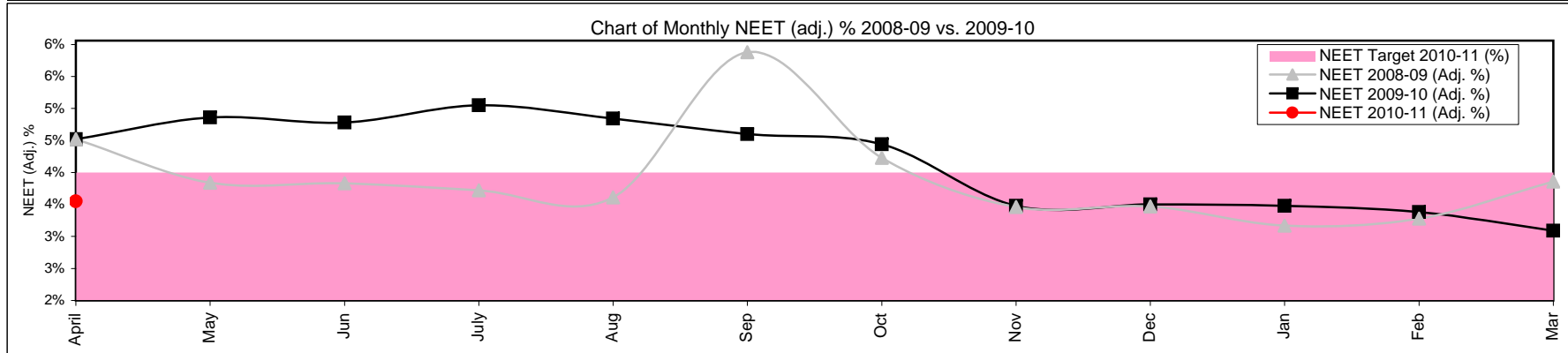
82	Not Known	2.7%	+1.3%	↑
18	Current situation not known	22.0%	-23.3%	↓
3	Cannot Be Contacted	3.7%	-3.5%	↓
1	Refused to disclose activity	1.2%	-1.2%	↓
60	Currency Expired	73.2%	+27.9%	↑

19 Year Old Not Known Breakdown

96	Not Known	9.6%	+0.3%	↑
5	Current situation not known	5.2%	-0.2%	↓
26	Cannot Be Contacted	27.1%	-0.9%	↓
0	Refused to disclose activity	0.0%	+0%	↔
65	Currency Expired	67.7%	+1%	↑



16-18 NEET Yearly Comparison	April	May	June	July	August	September	October	November	December	January	February	March
16-18 Cohort 2009-10	2773	2684	2580	2502	2423	3472	3007	3421	3343	3274	3196	3167
16-18 Cohort 2010-11	3092	0	0	0	0	0	0	0	0	0	0	0
EET 2009-10	2573	2454	2386	2309	2244	2577	2597	3218	3144	3077	3011	3030
EET 2010-11	2909	0	0	0	0	0	0	0	0	0	0	0
NEET 2009-10	115	118	111	118	107	109	103	106	102	98	99	93
NEET 2010-11	99	0	0	0	0	0	0	0	0	0	0	0
NEET 2009-10 (Adj. %)	4.52%	4.86%	4.78%	5.05%	4.84%	4.60%	4.44%	3.48%	3.50%	3.48%	3.38%	3.09%
NEET 2010-11 (Adj. %)	3.55%	0.00%	0.00%	0.00%	0.00%	0.00%	0.00%	0.00%	0.00%	0.00%	0.00%	0.00%
NEET Target 2010-11 (%)	4.00%	4.00%	4.00%	4.00%	4.00%	4.00%	4.00%	4.00%	4.00%	4.00%	4.00%	4.00%
Not Known 2009-10	83	111	81	73	70	784	305	94	94	97	84	42
Not Known 2010-11	82	0	0	0	0	0	0	0	0	0	0	0
Not Known 2009-10 (%)	2.99%	4.14%	3.14%	2.92%	2.89%	22.58%	10.14%	2.75%	2.81%	2.96%	2.63%	1.33%
Not Known 2010-11 (%)	2.65%	0.00%	0.00%	0.00%	0.00%	0.00%	0.00%	0.00%	0.00%	0.00%	0.00%	0.00%
Target 2010-11 (%)	3.50%	3.50%	3.50%	3.50%	3.50%	3.50%	3.50%	3.50%	3.50%	3.50%	3.50%	3.50%



Monthly NEET and Not Known Cohort Analysis

Definitions

1 Introduction

- 1.1 The data within this report has been compiled from the Connexions South London Client Caseload Information Systems Management Information return to the Department of Children, Schools and Families for 2010/11.

2 Definitions

- 2.1 The Not in Education, Employment or Training (NEET) cohort is defined by the following destinations:

- Any unemployed category
- Personal Development Opportunity
- Personal Development Opportunity – Waged
- Supporting Family Young Carer
- Supporting Family – Teenage Parent
- Not Available - Illness
- Pregnancy – (11 weeks to due date)
- Not Available - Religious or Cultural grounds
- Never Economically Active
- Voluntary work
- New Deal Gateway
- Not available - Other reason

2.2 The Not Known cohort is defined by the following destinations:

- Current situation Not Known
- Cannot be contacted
- Refused to provide information
- Currency expired

2.3 The Vulnerable group categories are defined as the follow target groups:

- LDD
- Teenage Parent
- Pregnancy
- Supervised by YOTS
- Care Leaver
- Substance misuse
- Young Carer
- Refugee/Asylum Seeker
- Teenage Father
- Looked After/In Care

2.4 The NEET adjusted percentage and numbers are calculated using the following formula:

- DCSF research determined that from those who lapsed from EET 92% were likely to still be EET and so the remaining 8% would be counted as NEET. For those who had lapsed from NEET, 58% were likely to have re-joined NEET and so the remaining 42% would be EET.
- This calculation is then applied to those who have lapsed to produce the adjusted NEET percentage.
- The adjusted lapsed figures are added back into the EET and NEET cohorts, the numbers are re-calculated (NEET/EET + NEET).