

May 2010 NEET and Not Known Cohort Analysis

The data contained within this report has been compiled from the Connexions South London Client Caseload Information System (CCIS) Management Information return for May 2010.

The Report provides an analysis of young people aged 16-18 and 19 years within the NEET group, detailed by the following categories :

- Gender
- Age
- Support Level
- Ethnic Origin
- Vulnerable Group Characteristics
- Top 25 Wards
- Not Known

The 16-18 NEET Group has also been analysed to show the following :

- Availability to the Labour Market
- Non availability to the Labour Market
- NEET Joiners & leavers

Overall

16-18

The Adjusted NEET figure for ages 16-18 in Merton in May 2010 is 5.6%, which shows a 0.3% decrease from April 2010. The actual number of NEET young people within Merton is 120, which is an increase in 3 young people from the April 2010 total of 117. The Not Known percentage for 16-18 Merton in May 2010 is 6% or a total of 142 young people. This is a decrease in 0.9% from April 2010 where 178 young people were Not Known.

19 Year Olds

The Adjusted NEET figure for 19 year olds in Merton in May 2010 is 4.7%, which a decrease of 0.7% from April 2010. The Not Known percentage for 19 year olds in Merton in May 2010 is 11.7% or 135 young people. This is a decrease of 1.4% from April 2010 where 164 young people were described as being Not Known.

Gender, Age & Support Level

16-18

The 16-18 NEET totals for gender in Merton show male young people with a higher percentage of 55% (66) compared to 45% (54) for female young people. The majority of 16-18 NEET are 17 (40.8%) and 18 (52.5%) years old. 16 year olds made up the remaining 6.7% (8) of the NEET group in May 2010. The majority of NEET in this age range were described as having a support level of "Supported", with a total of 68 (56.7%) young people. Only 25.8% (31) and 17.5% (21) of 16-18 year old NEET were classified as having either "minimum" and "Intensive" needs respectively.

19 Year Olds

The 19 year old NEET in Merton are split similarly in terms of gender, with totals of 22 (66.7%) and 11 (33.3%) for male and female young people respectively. The majority of NEET in this age range were described as having a support level of "Supported" and "minimum" with totals of 18 (54.6%) and 10 (30.3%) respectively. Only 5 (15.2%) of 19 year old NEET were described as having "Intensive" needs.

Ethnicity

16-18

The majority of 16-18 NEET in Merton in May 2010 have an ethnicity group of white with 79 young people (65.8%). The other largest totals are from the Black ethnic group with 18 (15%) and the mixed ethnic group with 10 (8.3%). The remaining ethnic groups make up 10.8% (13) of the NEET young people in this age range.

19 Year Olds

The majority of 19 year old NEET in Merton in May 2010 have an ethnicity group of White with 23 young people (69.7%). The other largest totals are from the Black and Mixed ethnic groups with 4 (12.1%) and 3 (9.1%) young people respectively.

Vulnerable Groups

16-18

The highest total of NEET young people having a vulnerable group characteristic are those described as Teenage mothers in May 2010 with 10.8% (13). The other largest vulnerable group percentages of NEET young people in this age range are those described as having LDD with 10 (8.3%) young people.

19 Year Olds

The highest totals of NEET young people having a vulnerable group characteristic are those described as LDD, Teenage mothers and Supervised by YOT in May 2010 with 12.1% (4), 9.1% (3) and 9.1% (3) respectively.

16-18 NEET Availability

Available

In May 2010 80% of the total 16-18 NEET group are available to the labour market. Within this available group, 74 (77.1%) young people are described as seeking employment, education and training. The other largest total is 8.3% (8) for those described as NEET awaiting level 2 place.

Not Available

In May 2010 20% of the total 16-18 NEET group are not available to the labour market. Within this unavailable group, 12 (50%) are described as NEET Teenage parents.

NEET Joiners & Leavers

Joiners

Of the 33 young people who joined the Merton NEET group in May 2010, 18.2% (6) are from education and 6.1% (2) are from employment destinations. The other largest total of the destination types which make up the total young people joining the NEET group come from currency re-established with 57.6% (19).

Leavers

Out of the 27 young people who left the Merton NEET group in May 2010, 40.7% (11) are going to Employment and 18.5% (5) are going to currency expired destinations.

NEET Ward Analysis

16-18

The largest number of 16-18 NEET in Merton in May 2010 are from St Helier with 14.2% (17) of the total NEET group.

19 Year Olds

The largest numbers of 19 year old NEET in Merton in May 2010 are from Longthornton, Lavender Fields and Ravensbury wards each with 12.1% (4) of the total 19 year old NEET group.

Not Known Analysis

16-18

Out of the 142 Not Known, the largest proportion are described as cannot be contacted with 61.3% (87). The other largest percentage are those described as currency expired with 21.8% (31).

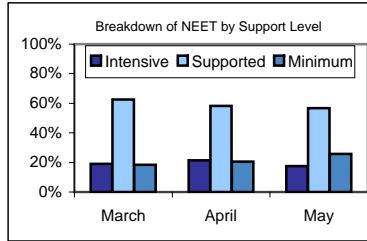
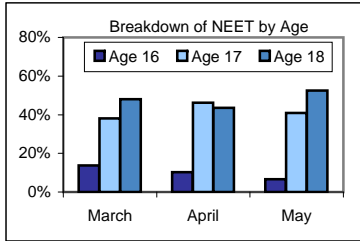
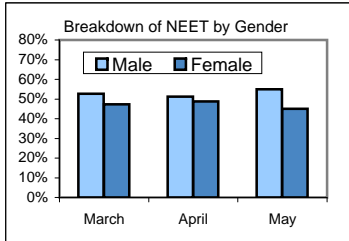
19 Year Olds

The breakdown of the 135 Not Known for the 19 year olds in Merton in May show the largest proportion have having currency expired destinations with 43% (58). The other largest percentage are those with destinations described as current situation not known with 29.6% (40).

NEET Aged 16-18

The Adjusted NEET Figure is 5.6% (126 Adj).

The unadjusted NEET Total is 120 and the Not Known is 5.95% (142)



Gender

55.0% (66) are Male
45.0% (54) are Female

Age

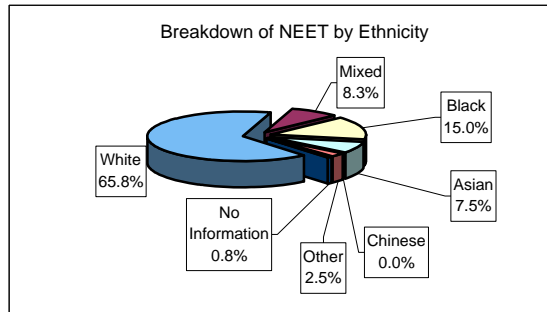
6.7% (8) are aged 16
40.8% (49) are aged 17
52.5% (63) are aged 18

Support level

25.8% (31) Minimum
56.7% (68) Supported
17.5% (21) Intensive

Ethnic Origin

79	White	65.8%
10	Mixed	8.3%
18	Black	15.0%
9	Asian	7.5%
0	Chinese	0.0%
3	Other	2.5%
1	No Information	0.8%



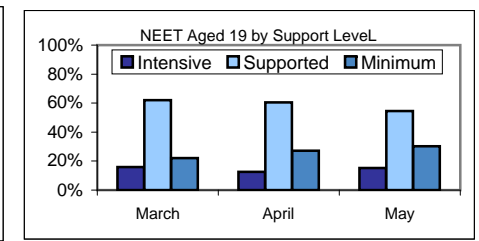
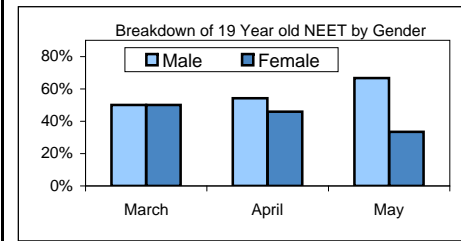
Vulnerable Group Characteristics

10	LDD	8.3%	-1.9% ↓
13	Teenage Mother	10.8%	-1.1% ↓
1	Parent	0.8%	-0.9% ↓
6	Pregnancy	5.0%	-0.1% ↓
4	Supervised by YOTS	3.3%	-0.1% ↓
2	Care Leaver	1.7%	-0% ↓
0	Substance misuse	0.0%	+0% ⇄
2	Young Carer	1.7%	-0% ↓
0	Refugee/Asylum Seeker	0.0%	+0% ⇄
0	Teenage Father	0.0%	+0% ⇄
0	Looked After/InCare	0.0%	-1.7% ↓

NEET Aged 19

The Adjusted NEET Figure is 4.7% (51 Adj).

The unadjusted NEET Total is 33 and the Not Known is 11.69% (135)



Gender

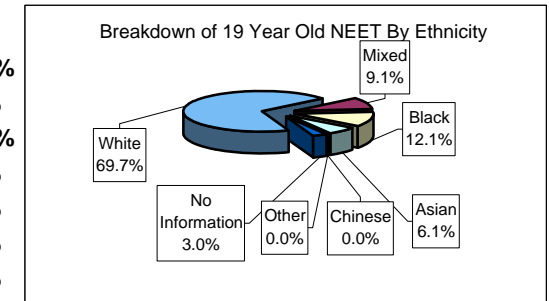
66.7% (22) are Male
33.3% (11) are Female

Support level

30.3% (10) Minimum
54.6% (18) Supported
15.2% (5) Intensive

Ethnic Origin

23	White	69.7%
3	Mixed	9.1%
4	Black	12.1%
2	Asian	6.1%
0	Chinese	0.0%
0	Other	0.0%
1	No Information	3.0%



19 year Old Vulnerable Group Characteristics

4	LDD	12.1%	+5.9% ↑
3	Teenage Mother	9.1%	-9.7% ↓
0	Parent	0.0%	+0% ⇄
0	Pregnancy	0.0%	-4.2% ↓
3	Supervised by YOTS	9.1%	-1.3% ↓
0	Care Leaver	0.0%	+0% ⇄
0	Substance misuse	0.0%	+0% ⇄
0	Young Carer	0.0%	-2.1% ↓
0	Refugee/Asylum Seeker	0.0%	+0% ⇄
0	Teenage Father	0.0%	-2.1% ↓
0	Looked After/InCare	0.0%	+0% ⇄

NEET Aged 16-18

Availability

80.0% (96) of the NEET group are available to the labour market.

74	Seeking employment, education or training	77.1%	+3.6% ↑
0	Waged PDOs	0.0%	+0% ⇄
7	Other PDOs	7.3%	-3.5% ↓
4	Not yet ready for work or learning	4.2%	+0.3% ↑
0	Awaiting an E2E place	0.0%	+0% ⇄
0	Awaiting sub level 2 place	0.0%	-1% ↓
8	Awaiting level 2 place	8.3%	+0.5% ↑
2	Awaiting level 3+ place	2.1%	+1.1% ↑
1	Start Date agreed	1.0%	-0.9% ↓
0	Activity Agreement	0.0%	+0% ⇄
0	New Deal Gateway	0.0%	+0% ⇄

20.0% (24) are not available to the labour market.

3	Young carers	12.5%	+5.8% ↑
12	Teenage parents	50.0%	-30% ↓
6	Illness	25.0%	-18.3% ↑
2	Pregnancy	8.3%	+1.7% ↑
0	Religious grounds	0.0%	+0% ⇄
1	Unlikely to be economically active	4.2%	+4.2% ↑
0	Other reason	0.0%	+0% ⇄

5	Other (not EET or NEET)	4.2%	+0.8% ↑
---	-------------------------	------	---------

5	Custody	4.2%	+0.8% ↑
0	Refugees/Asylum seekers	0.0%	+0% ⇄

NEET Joiners

33 young people joined the NEET group in May

6	From Education	18.2%	-40.2% ↓
2	From Employment	6.1%	-2.3% ↓
1	From Government supported training	3.0%	-5.3% ↑
0	From NEET in other area	0.0%	+0% ⇄
5	From Other (inc custodial sentence)	15.2%	-9.9% ↓
19	From Currency re-established	57.6%	+57.6% ↑

NEET Leavers

27 young people left the NEET group in May

1	Into Education	3.7%	+3.7% ↑
11	Into Employment	40.7%	+23.1% ↑
5	Into Government Supported Training	18.5%	+12.6% ↑
1	Into NEET in other area	3.7%	+3.7% ↑
0	Into Custodial Sentence	0.0%	-11.8% ↓
1	Into Moved Away	3.7%	+3.7% ↑
3	Into Cannot Be Contacted	11.1%	+11.1% ↑
0	Into Refused to disclose activity	0.0%	+0% ⇄
5	Into Currency Expired	18.5%	-46.2% ↓
0	Into Unknown Activity	0.0%	+0% ⇄
0	Into Other Reason	0.0%	+0% ⇄

16-18 NEET Breakdown by Top 25 Wards

17	MER - St Helier	14.2%
16	MER - Longthornton	13.3%
13	MER - Cricket Green	10.8%
11	MER - Lavender Fields	9.2%
10	MER - Figge's Marsh	8.3%
8	MER - Ravensbury	6.7%
8	MER - Graveney	6.7%
6	MER - Pollards Hill	5.0%
6	MER - Cannon Hill	5.0%
6	MER - Dundonald	5.0%
5	MER - Colliers Wood	4.2%
4	MER - West Barnes	3.3%
2	MER - Raynes Park	1.7%
2	MER - Merton Park	1.7%
2	MER - Abbey	1.7%
2	MER - Lower Morden	1.7%
1	MER - Trinity	0.8%
1	MER - Village	0.8%

19 year Old NEET Breakdown by Top 25 Wards

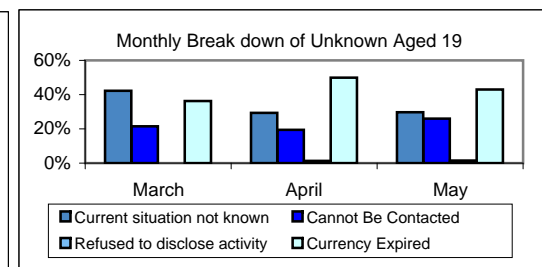
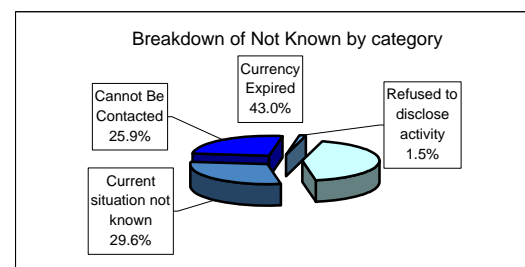
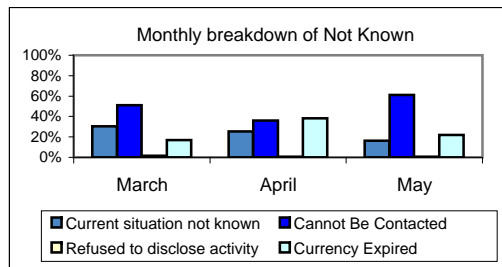
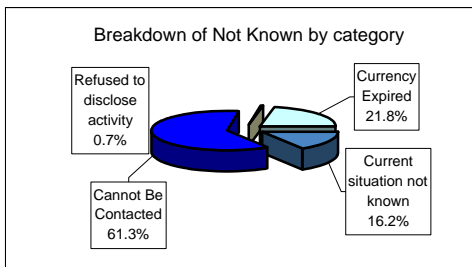
4	MER - Longthornton	12.1%
4	MER - Lavender Fields	12.1%
4	MER - Ravensbury	12.1%
3	MER - St Helier	9.1%
3	MER - Abbey	9.1%
2	MER - Graveney	6.1%
2	MER - Cannon Hill	6.1%
2	MER - Colliers Wood	6.1%
2	MER - Hillside	6.1%
1	MER - Cricket Green	3.0%
1	MER - Pollards Hill	3.0%
1	MER - West Barnes	3.0%
1	MER - Merton Park	3.0%
1	MER - Lower Morden	3.0%
1	MER - Trinity	3.0%
1	MER - Wimbledon Park	3.0%

16-18 Not Known Breakdown

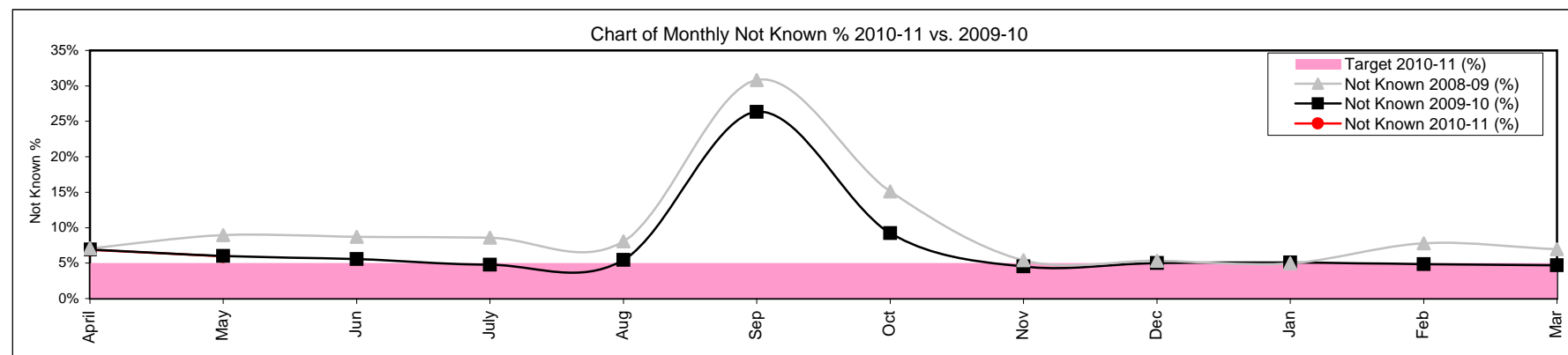
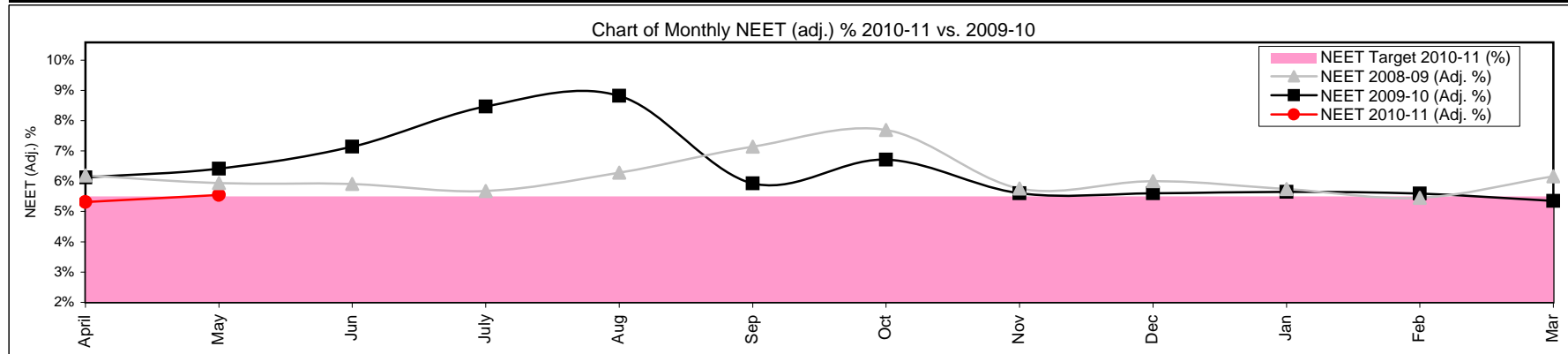
142	Not Known	6.0%	-0.9%	↓
23	Current situation not known	16.2%	-9.1%	↓
87	Cannot Be Contacted	61.3%	+25.3%	↑
1	Refused to disclose activity	0.7%	+0.1%	↑
31	Currency Expired	21.8%	-16.4%	↓

19 Year Old Not Known Breakdown

135	Not Known	11.7%	-1.4%	↓
40	Current situation not known	29.6%	+0.4%	↑
35	Cannot Be Contacted	25.9%	+6.4%	↑
2	Refused to disclose activity	1.5%	+0.3%	↑
58	Currency Expired	43.0%	-7%	↓



16-18 NEET Yearly Comparison	April	May	June	July	August	September	October	November	December	January	February	March
16-18 Cohort 2009-10	2360	2267	2180	2086	1990	2930	2709	2784	2706	2584	2512	2667
16-18 Cohort 2010-11	2584	2386	0	0	0	0	0	0	0	0	0	0
EET 2009-10	2066	1999	1915	1817	1716	2036	2290	2505	2425	2318	2260	2409
EET 2010-11	2285	2119	0	0	0	0	0	0	0	0	0	0
NEET 2009-10	126	128	140	165	161	116	162	147	141	131	128	131
NEET 2010-11	117	120	0	0	0	0	0	0	0	0	0	0
NEET 2009-10 (Adj. %)	6.12%	6.41%	7.14%	8.47%	8.82%	5.93%	6.71%	5.60%	5.60%	5.65%	5.59%	5.35%
NEET 2010-11 (Adj. %)	5.31%	5.55%	0.00%	0.00%	0.00%	0.00%	0.00%	0.00%	0.00%	0.00%	0.00%	0.00%
NEET Target 2010-11 (%)	5.50%	5.50%	5.50%	5.50%	5.50%	5.50%	5.50%	5.50%	5.50%	5.50%	5.50%	5.50%
Not Known 2009-10	163	136	121	100	108	771	250	126	136	132	122	125
Not Known 2010-11	178	142	0	0	0	0	0	0	0	0	0	0
Not Known 2009-10 (%)	6.91%	6.00%	5.55%	4.79%	5.43%	26.31%	9.23%	4.53%	5.03%	5.11%	4.86%	4.69%
Not Known 2010-11 (%)	6.89%	5.95%	0.00%	0.00%	0.00%	0.00%	0.00%	0.00%	0.00%	0.00%	0.00%	0.00%
Target 2010-11 (%)	5.00%	5.00%	5.00%	5.00%	5.00%	5.00%	5.00%	5.00%	5.00%	5.00%	5.00%	5.00%



Monthly NEET and Not Known Cohort Analysis

Definitions

1 Introduction

- 1.1 The data within this report has been compiled from the Connexions South London Client Caseload Information Systems Management Information return to the Department for Education for 2010/11.

2 Definitions

- 2.1 The Not in Education, Employment or Training (NEET) cohort is defined by the following destinations:

- Any unemployed category
- Personal Development Opportunity
- Personal Development Opportunity – Waged
- Supporting Family Young Carer
- Supporting Family – Teenage Parent
- Not Available - Illness
- Pregnancy – (11 weeks to due date)
- Not Available - Religious or Cultural grounds
- Never Economically Active
- Voluntary work
- New Deal Gateway
- Not available - Other reason

2.2 The Not Known cohort is defined by the following destinations:

- Current situation Not Known
- Cannot be contacted
- Refused to provide information
- Currency expired

2.3 The Vulnerable group categories are defined as the follow target groups:

- LDD
- Teenage Parent
- Pregnancy
- Supervised by YOTS
- Care Leaver
- Substance misuse
- Young Carer
- Refugee/Asylum Seeker
- Teenage Father
- Looked After/In Care

2.4 The NEET adjusted percentage and numbers are calculated using the following formula:

- DfE research determined that from those who lapsed from EET 92% were likely to still be EET and so the remaining 8% would be counted as NEET. For those who had lapsed from NEET, 58% were likely to have re-joined NEET and so the remaining 42% would be EET.
- This calculation is then applied to those who have lapsed to produce the adjusted NEET percentage.
- The adjusted lapsed figures are added back into the EET and NEET cohorts, the numbers are re-calculated (NEET/EET + NEET).