

June 2010 NEET and Not Known Cohort Analysis

The data contained within this report has been compiled from the Connexions South London Client Caseload Information System (CCIS) Management Information return for June 2010.

The Report provides an analysis of young people aged 16-18 and 19 years within the NEET group, detailed by the following categories :

- Gender
- Age
- Support Level
- Ethnic Origin
- Vulnerable Group Characteristics
- Top 25 Wards
- Not Known

The 16-18 NEET Group has also been analysed to show the following :

- Availability to the Labour Market
- Non availability to the Labour Market
- NEET Joiners & leavers

Overall

16-18

The Adjusted NEET figure for ages 16-18 in Merton in June 2010 is 5.5%, which shows a 0.1% decrease from May 2010. The actual number of NEET young people within Merton is 111, which is a decrease in 9 young people from the May 2010 total of 120. The Not Known percentage for 16-18 Merton in June 2010 is 5.9% or a total of 133 young people. This is an increase in 0.1% from May 2010 where 142 young people were Not Known.

19 Year Olds

The Adjusted NEET figure for 19 year olds in Merton in June 2010 is 6.3%, which a n increase of 1.6% from May 2010. The Not Known percentage for 19 year olds in Merton in June 2010 is 10% or 116 young people. This is a decrease of 1.7% from May 2010 where 135 young people were described as being Not Known.

Gender, Age & Support Level

16-18

The 16-18 NEET totals for gender in Merton show male young people with a much higher percentage of 60.4% (67) compared to 39.6% (44) for female young people. The majority of 16-18 NEET are 17 (46%) and 18 (46.9%) years old. 16 year olds made up the remaining 7.2% (8) of the NEET group in June 2010. The majority of NEET in this age range were described as having a support level of "Supported", with a total of 55 (49.6%) young people. Only 32.4% (36) and 18% (20) of 16-18 year old NEET were classified as having either "minimum" and "Intensive" needs respectively.

19 Year Olds

The 19 year old NEET in Merton are split more closely in terms of gender, with totals of 27 (45%) and 33 (55%) for male and female young people respectively. The majority of NEET in this age range were described as having a support level of "Supported" and "minimum" with totals of 37 (61.7%) and 12 (20%) respectively . Only 11 (18.3%) of 19 year old NEET were described as having "Intensive" needs.

Ethnicity

16-18

The majority of 16-18 NEET in Merton in June 2010 have an ethnicity group of white with 76 young people (68.5%). The other largest totals are from the Black ethnic group with 16 (14.4%) and the mixed ethnic group with 8 (7.2%). The remaining ethnic groups make up 9.9% (11) of the NEET young people in this age range.

19 Year Olds

The majority of 19 year old NEET in Merton in June 2010 have an ethnicity group of White with 47 young people (78.3%). The other largest totals are from the Black and Mixed ethnic groups with 6 (10%) and 5 (8.3%) young people respectively.

Vulnerable Groups

16-18

The highest total of NEET young people having a vulnerable group characteristic are those described as as having LDD with 13 (11.7%). The other largest vulnerable group percentages of NEET young people in this age range are those described as being Teenage mothers and Supervised by YOT both with 8 (7.2%) young people.

19 Year Olds

The highest totals of NEET young people having a vulnerable group characteristic are those described as Teenage mothers and those young people with LDD in June 2010 with 28.3% (17) and 10% (6) respectively.

16-18 NEET Availability

Available

In June 2010 83.8% of the total 16-18 NEET group are available to the labour market. Within this available group, 69 (74.2%) young people are described as seeking employment, education and training. The other largest total is 11.8% (11) for those described as NEET awaiting level 2 place.

Not Available

In June 2010 16.2% of the total 16-18 NEET group are not available to the labour market. Within this unavailable group, 9 (50%) are described as NEET Teenage parents.

NEET Joiners & Leavers

Joiners

Of the 21 young people who joined the Merton NEET group in June 2010, 23.8% (5) are from education and 9.5% (2) are from employment destinations. The other largest total of the destination types which make up the total young people joining the NEET group come from currency re-established with 33.3% (7).

Leavers

Out of the 17 young people who left the Merton NEET group in June 2010, 23.5% (4) are going to Employment and 58.8% (10) are going to currency expired destinations.

NEET Ward Analysis

16-18

The largest number of 16-18 NEET in Merton in June 2010 are from Longthornton and St Helier wards with 16.2% (18) and 14.4% (16) of the total NEET group.

19 Year Olds

The largest numbers of 19 year old NEET in Merton in June 2010 are from Pollards Hill, Abbey, Lavender Fields and Ravensbury wards each with 10% (6) of the total 19 year old NEET group.

Not Known Analysis

16-18

Out of the 133 Not Known, the largest proportion are described as cannot be contacted with 66.2% (88). The other largest percentage are those described as currency expired with 22.6% (30).

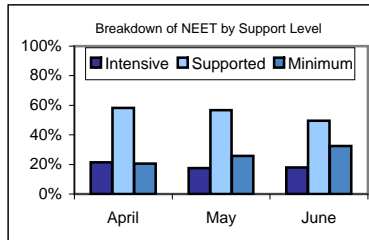
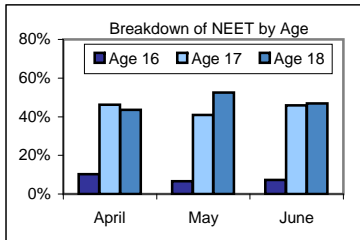
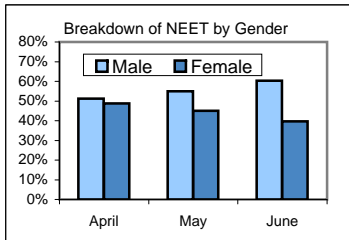
19 Year Olds

The breakdown of the 116 Not Known for the 19 year olds in Merton in June show the largest proportion are described as 'Cannot be contacted' with 35.3% (41). The other largest percentage are those with expired destinations with 34.5% (40).

NEET Aged 16-18

The Adjusted NEET Figure is 5.5% (120 Adj).

The unadjusted NEET Total is 111 and the Not Known is 5.86% (133)



Gender

60.4% (67) are Male
39.6% (44) are Female

Age

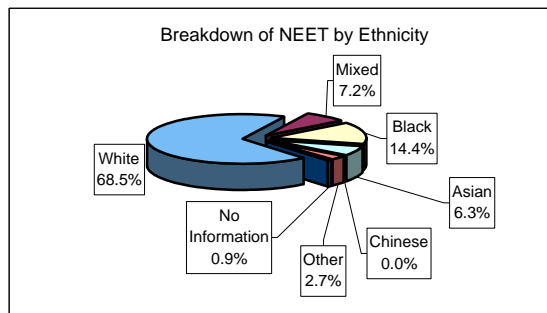
7.2% (8) are aged 16
46.0% (51) are aged 17
46.9% (52) are aged 18

Support level

32.4% (36) Minimum
49.6% (55) Supported
18.0% (20) Intensive

Ethnic Origin

76	White	68.5%
8	Mixed	7.2%
16	Black	14.4%
7	Asian	6.3%
0	Chinese	0.0%
3	Other	2.7%
1	No Information	0.9%



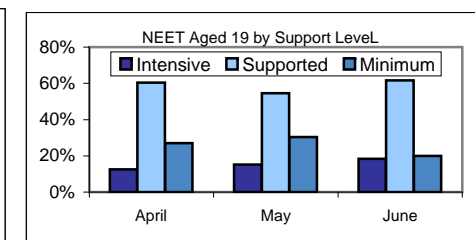
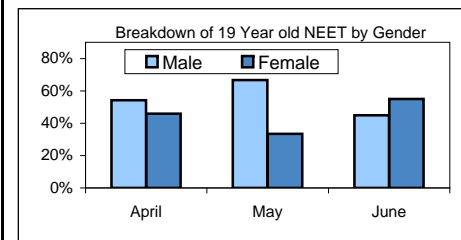
Vulnerable Group Characteristics

13	LDD	11.7%	+3.4% ↑
8	Teenage Mother	7.2%	-3.6% ↓
1	Parent	0.9%	+0.1% ↑
8	Pregnancy	7.2%	+2.2% ↑
2	Supervised by YOTS	1.8%	-1.5% ↓
2	Care Leaver	1.8%	+0.1% ↑
0	Substance misuse	0.0%	+0% ⇌
1	Young Carer	0.9%	-0.8% ↓
0	Refugee/Asylum Seeker	0.0%	+0% ⇌
0	Teenage Father	0.0%	+0% ⇌
0	Looked After/InCare	0.0%	+0% ⇌

NEET Aged 19

The Adjusted NEET Figure is 6.3% (68 Adj).

The unadjusted NEET Total is 60 and the Not Known is 10.04% (116)



Gender

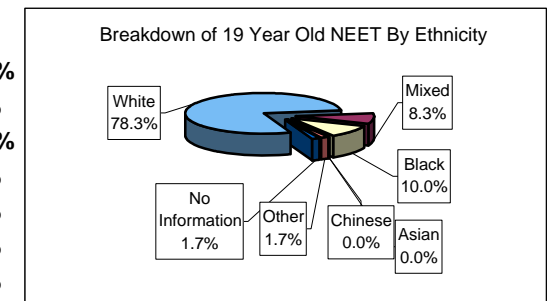
45.0% (27) are Male
55.0% (33) are Female

Support level

20.0% (12) Minimum
61.7% (37) Supported
18.3% (11) Intensive

Ethnic Origin

47	White	78.3%
5	Mixed	8.3%
6	Black	10.0%
0	Asian	0.0%
0	Chinese	0.0%
1	Other	1.7%
1	No Information	1.7%



19 year Old Vulnerable Group Characteristics

6	LDD	10.0%	-2.1% ↓
17	Teenage Mother	28.3%	+19.2% ↑
0	Parent	0.0%	+0% ⇌
4	Pregnancy	6.7%	+6.7% ↑
5	Supervised by YOTS	8.3%	-0.8% ↓
0	Care Leaver	0.0%	+0% ⇌
0	Substance misuse	0.0%	+0% ⇌
1	Young Carer	1.7%	+1.7% ↑
0	Refugee/Asylum Seeker	0.0%	+0% ⇌
0	Teenage Father	0.0%	+0% ⇌
0	Looked After/InCare	0.0%	+0% ⇌

NEET Aged 16-18

Availability

83.8% (93) of the NEET group are available to the labour market.

69	Seeking employment, education or training	74.2%	-2.9% ↓
0	Waged PDOs	0.0%	+0% ⇄
3	Other PDOs	3.2%	-4.1% ↓
1	Not yet ready for work or learning	1.1%	-3.1% ↓
0	Awaiting an E2E place	0.0%	+0% ⇄
1	Awaiting sub level 2 place	1.1%	+1.1% ↑
11	Awaiting level 2 place	11.8%	+3.5% ↑
3	Awaiting level 3+ place	3.2%	+1.2% ↑
5	Start Date agreed	5.4%	+4.3% ↑
0	Activity Agreement	0.0%	+0% ⇄
0	New Deal Gateway	0.0%	+0% ⇄

16.2% (18) are not available to the labour market.

2	Young carers	11.1%	-1.4% ↓
9	Teenage parents	50.0%	+0% ⇄
5	Illness	27.8%	+2.8% ↑
1	Pregnancy	5.6%	-2.8% ↓
0	Religious grounds	0.0%	+0% ⇄
1	Unlikely to be economically active	5.6%	+1.4% ↑
0	Other reason	0.0%	+0% ⇄

3	Other (not EET or NEET)	2.7%	-1.5% ↓
3	Custody	2.7%	-1.5% ↓
0	Refugees/Asylum seekers	0.0%	+0% ⇄

NEET Joiners

21 young people joined the NEET group in June

5	From Education	23.8%	+5.6% ↑
2	From Employment	9.5%	+3.5% ↑
3	From Government supported training	14.3%	+11.3% ↓
0	From NEET in other area	0.0%	+0% ⇄
4	From Other (inc custodial sentence)	19.1%	+3.9% ↑
7	From Currency re-established	33.3%	-24.3% ↓

NEET Leavers

17 young people left the NEET group in June

0	Into Education	0.0%	-3.7% ↓
4	Into Employment	23.5%	-17.2% ↓
3	Into Government Supported Training	17.7%	-0.9% ↓
0	Into NEET in other area	0.0%	-3.7% ↓
0	Into Custodial Sentence	0.0%	+0% ⇄
0	Into Moved Away	0.0%	-3.7% ↓
0	Into Cannot Be Contacted	0.0%	-11.1% ↓
0	Into Refused to disclose activity	0.0%	+0% ⇄
10	Into Currency Expired	58.8%	+40.3% ↑
0	Into Unknown Activity	0.0%	+0% ⇄
0	Into Other Reason	0.0%	+0% ⇄

16-18 NEET Breakdown by Top 25 Wards

18	MER - Longthornton	16.2%
16	MER - St Helier	14.4%
12	MER - Lavender Fields	10.8%
10	MER - Cricket Green	9.0%
9	MER - Pollards Hill	8.1%
7	MER - Ravensbury	6.3%
7	MER - Figge's Marsh	6.3%
7	MER - Cannon Hill	6.3%
5	MER - Graveney	4.5%
5	MER - Colliers Wood	4.5%
3	MER - Dundonald	2.7%
2	MER - Trinity	1.8%
2	MER - Raynes Park	1.8%
2	MER - Merton Park	1.8%
2	MER - Abbey	1.8%
2	MER - Lower Morden	1.8%
1	MER - West Barnes	0.9%
1	MER - Village	0.9%

19 year Old NEET Breakdown by Top 25 Wards

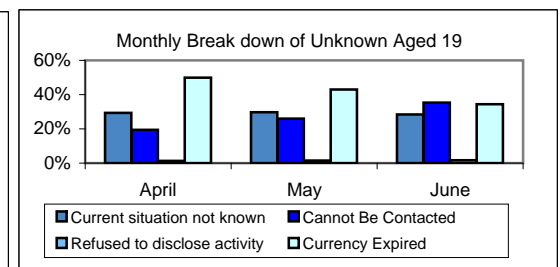
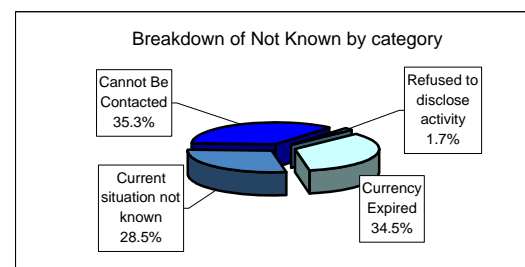
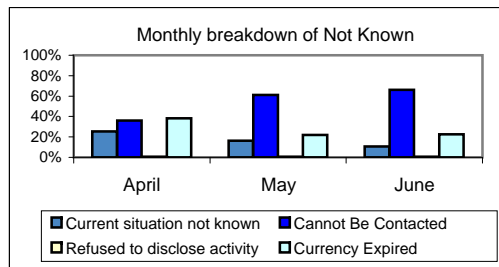
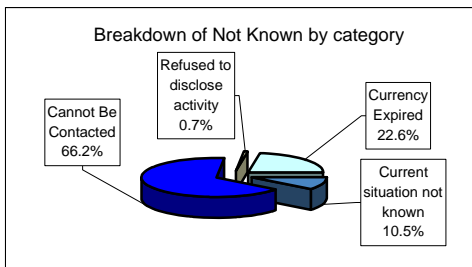
6	MER - Lavender Fields	10.0%
6	MER - Pollards Hill	10.0%
6	MER - Ravensbury	10.0%
6	MER - Abbey	10.0%
5	MER - Cricket Green	8.3%
5	MER - Colliers Wood	8.3%
3	MER - St Helier	5.0%
3	MER - West Barnes	5.0%
3	MER - Wimbledon Park	5.0%
2	MER - Longthornton	3.3%
2	MER - Figge's Marsh	3.3%
2	MER - Cannon Hill	3.3%
2	MER - Graveney	3.3%
2	MER - Trinity	3.3%
2	MER - Merton Park	3.3%
2	MER - Lower Morden	3.3%
2	MER - Hillside	3.3%
1	MER - Dundonald	1.7%

16-18 Not Known Breakdown

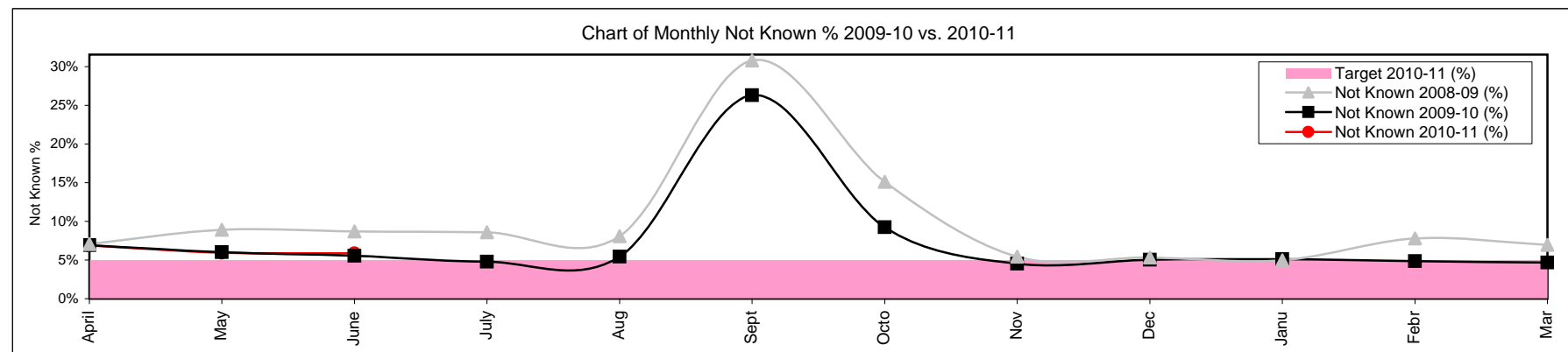
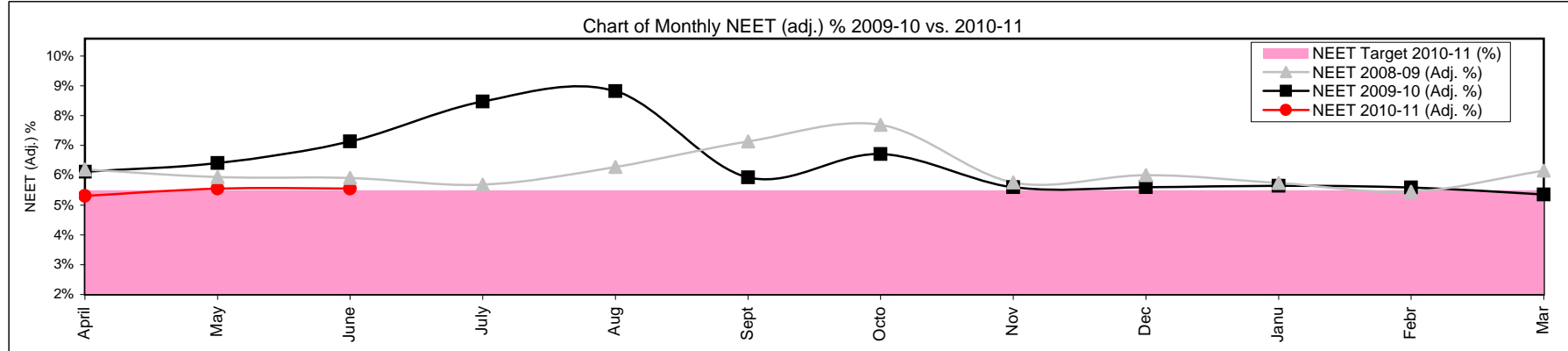
133	Not Known	5.9%	-0.1%	↓
14	Current situation not known	10.5%	-5.7%	↓
88	Cannot Be Contacted	66.2%	+4.9%	↑
1	Refused to disclose activity	0.8%	+0.1%	↑
30	Currency Expired	22.6%	+0.7%	↑

19 Year Old Not Known Breakdown

116	Not Known	10.0%	-1.7%	↓
33	Current situation not known	28.5%	-1.2%	↓
41	Cannot Be Contacted	35.3%	+9.4%	↑
2	Refused to disclose activity	1.7%	+0.2%	↑
40	Currency Expired	34.5%	-8.5%	↓



16-18 NEET Yearly Comparison	April	May	June	July	August	September	October	November	December	January	February	March
16-18 Cohort 2009-10	2360	2267	2180	2086	1990	2930	2709	2784	2706	2584	2512	2667
16-18 Cohort 2010-11	2584	2386	2269	0	0	0	0	0	0	0	0	0
EET 2009-10	2066	1999	1915	1817	1716	2036	2290	2505	2425	2318	2260	2409
EET 2010-11	2285	2119	2022	0	0	0	0	0	0	0	0	0
NEET 2009-10	126	128	140	165	161	116	162	147	141	131	128	131
NEET 2010-11	117	120	111	0	0	0	0	0	0	0	0	0
NEET 2009-10 (Adj. %)	6.1%	6.4%	7.1%	8.5%	8.8%	5.9%	6.7%	5.6%	5.6%	5.7%	5.6%	5.4%
NEET 2010-11 (Adj. %)	5.31%	5.55%	5.55%	0.00%	0.00%	0.00%	0.00%	0.00%	0.00%	0.00%	0.00%	0.00%
NEET Target 2010-11 (%)	5.50%	5.50%	5.50%	5.50%	5.50%	5.50%	5.50%	5.50%	5.50%	5.50%	5.50%	5.50%
Not Known 2009-10	163	136	121	100	108	771	250	126	136	132	122	125
Not Known 2010-11	178	142	133	0	0	0	0	0	0	0	0	0
Not Known 2009-10 (%)	6.91%	6.00%	5.55%	4.79%	5.43%	26.31%	9.23%	4.53%	5.03%	5.11%	4.86%	4.69%
Not Known 2010-11 (%)	6.89%	5.95%	5.86%	0.00%	0.00%	0.00%	0.00%	0.00%	0.00%	0.00%	0.00%	0.00%
Target 2010-11 (%)	5.00%	5.00%	5.00%	5.00%	5.00%	5.00%	5.00%	5.00%	5.00%	5.00%	5.00%	5.00%



Monthly NEET and Not Known Cohort Analysis

Definitions

1 Introduction

- 1.1 The data within this report has been compiled from the Connexions South London Client Caseload Information Systems Management Information return to the Department for Education for 2010/11.

2 Definitions

- 2.1 The Not in Education, Employment or Training (NEET) cohort is defined by the following destinations:

- Any unemployed category
- Personal Development Opportunity
- Personal Development Opportunity – Waged
- Supporting Family Young Carer
- Supporting Family – Teenage Parent
- Not Available - Illness
- Pregnancy – (11 weeks to due date)
- Not Available - Religious or Cultural grounds
- Never Economically Active
- Voluntary work
- New Deal Gateway
- Not available - Other reason

2.2 The Not Known cohort is defined by the following destinations:

- Current situation Not Known
- Cannot be contacted
- Refused to provide information
- Currency expired

2.3 The Vulnerable group categories are defined as the follow target groups:

- LDD
- Teenage Parent
- Pregnancy
- Supervised by YOTS
- Care Leaver
- Substance misuse
- Young Carer
- Refugee/Asylum Seeker
- Teenage Father
- Looked After/In Care

2.4 The NEET adjusted percentage and numbers are calculated using the following formula:

- DfE research determined that from those who lapsed from EET 92% were likely to still be EET and so the remaining 8% would be counted as NEET. For those who had lapsed from NEET, 58% were likely to have re-joined NEET and so the remaining 42% would be EET.
- This calculation is then applied to those who have lapsed to produce the adjusted NEET percentage.
- The adjusted lapsed figures are added back into the EET and NEET cohorts, the numbers are re-calculated (NEET/EET + NEET).