

April 2010 NEET and Not Known Cohort Analysis

The data contained within this report has been compiled from the Connexions South London Client Caseload Information System (CCIS) Management Information return for April 2010.

The Report provides an analysis of young people aged 16-18 and 19 years within the NEET group, detailed by the following categories :

- Gender
- Age
- Support Level
- Ethnic Origin
- Vulnerable Group Characteristics
- Top 25 Wards
- Not Known

The 16-18 NEET Group has also been analysed to show the following :

- Availability to the Labour Market
- Non availability to the Labour Market
- NEET Joiners & leavers

Overall

16-18

The Adjusted NEET figure for ages 16-18 in Merton in April 2010 is 5.3%, which shows no change from March 2010. The actual number of NEET young people within Merton is 117, which is a decrease in 14 young people from the March 2010 total of 131. The Not Known percentage for 16-18 Merton in April 2010 is 6.9% or a total of 178 young people. This is an increase in 2.2% from March 2010 where 125 young people were Not Known.

19 Year Olds

The Adjusted NEET figure for 19 year olds in Merton in April 2010 is 5.4%, which a decrease of 0.1% from March 2010. The Not Known percentage for 19 year olds in Merton in April 2010 is 13.1% or 164 young people. This is an increase of 4% from March 2010 where 102 young people were described as being Not Known.

Gender, Age & Support Level

16-18

The 16-18 NEET totals for gender in Merton show male young people with a higher percentage of 51.3% (60) compared to 48.7% (57) for female young people. The majority of 16-18 NEET are 17 (46.2%) and 18 (43.6%) years old. 16 year olds made up the remaining 10.3% (12) of the NEET group in April 2010. The majority of NEET in this age range were described as having a support level of "Supported", with a total of 68 (58.1%) young people. Only 20.5% (24) and 21.4% (25) of 16-18 year old NEET were classified as having either "minimum" and "Intensive" needs respectively.

19 Year Olds

The 19 year old NEET in Merton are split similarly in terms of gender, with totals of 26 (54.2%) and 22 (45.8%) for male and female young people respectively. The majority of NEET in this age range were described as having a support level of "Supported" and "minimum" with totals of 29 (60.4%) and 13 (27.1%) respectively . Only 6 (12.5%) of 19 year old NEET were described as having "Intensive" needs.

Ethnicity

16-18

The majority of 16-18 NEET in Merton in April 2010 have an ethnicity group of white with 76 young people (65%). The other largest totals are from the Black ethnic group with 17 (14.5%) and the mixed ethnic group with 11 (9.4%). The remaining ethnic groups make up 11.2% (13) of the NEET young people in this age range.

19 Year Olds

The majority of 19 year old NEET in Merton in April 2010 have an ethnicity group of White with 39 young people (81.3%). The other largest totals are from the Black and Mixed ethnic groups each with 3 (6.3%) young people respectively.

Vulnerable Groups

16-18

The highest total of NEET young people having a vulnerable group characteristic are those described as Teenage mothers in April 2010 with 12% (14). The other largest vulnerable group percentages of NEET young people in this age range are those described as having LDD with 12 (10.3%) young people.

19 Year Olds

The highest totals of NEET young people having a vulnerable group characteristic are those described as Teenage mothers and Supervised by YOT in April 2010 with 18.8% (9) and 5 (10.4%) respectively.

16-18 NEET Availability

Available

In April 2010 87.2% of the total 16-18 NEET group are available to the labour market. Within this available group, 75 (73.5%) young people are described as seeking employment, education and training. The other largest total is 10.8% (11) for those described as NEET other PDOs.

Not Available

In April 2010 12.8% of the total 16-18 NEET group are not available to the labour market. Within this unavailable group, 12 (80%) are described as NEET Teenage parents.

NEET Joiners & Leavers

Joiners

Of the 12 young people who joined the Merton NEET group in April 2010, 58.3% (7) are from education and 8.3% (1) are from employment destinations. The other largest total of the destination types which make up the total young people joining the NEET group come from Other (inc. custodial sentence) with 25% (3).

Leavers

Out of the 17 young people who left the Merton NEET group in April 2010, 17.7% (3) are going to Employment and 64.7% (11) are going to currency expired destinations.

NEET Ward Analysis

16-18

The largest number of 16-18 NEET in Merton in April 2010 are from St Helier each with 12% (14) of the total NEET group.

19 Year Olds

The largest numbers of 19 year old NEET in Merton in April 2010 are from Abbey ward with 12.5% (6) of the total 19 year old NEET group.

Not Known Analysis

16-18

Out of the 178 Not Known, the largest proportion are described as currency expired with 38.2% (68). The other largest percentage are those described as cannot be contacted with 36% (64).

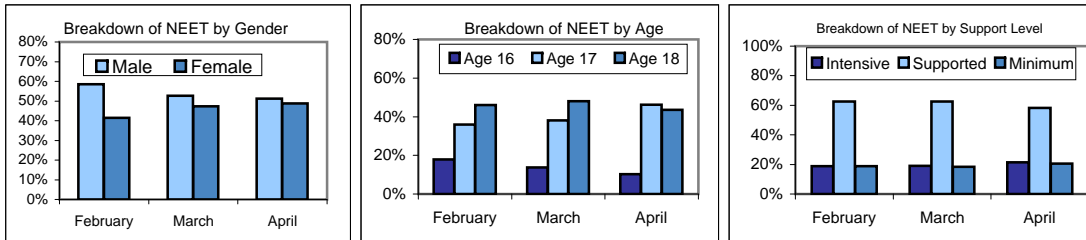
19 Year Olds

The breakdown of the 164 Not Known for the 19 year olds in Merton in April show the largest proportion have having currency expired destinations with 50% (82). The other largest percentage are those with destinations described as current situation not known with 29.3% (48).

NEET Aged 16-18

The Adjusted NEET Figure is 5.3% (131 Adj).

The unadjusted NEET Total is 117 and the Not Known is 6.89% (178)



Gender

51.3% (60) are Male
48.7% (57) are Female

Age

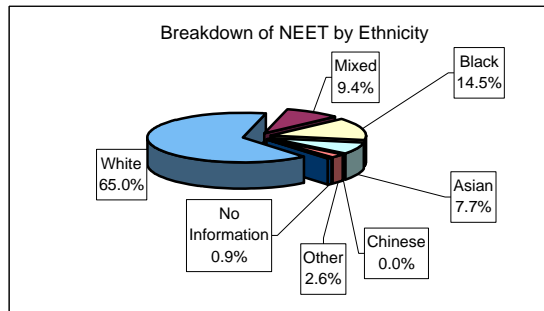
10.3% (12) are aged 16
46.2% (54) are aged 17
43.6% (51) are aged 18

Support level

20.5% (24) Minimum
58.1% (68) Supported
21.4% (25) Intensive

Ethnic Origin

76	White	65.0%
11	Mixed	9.4%
17	Black	14.5%
9	Asian	7.7%
0	Chinese	0.0%
3	Other	2.6%
1	No Information	0.9%



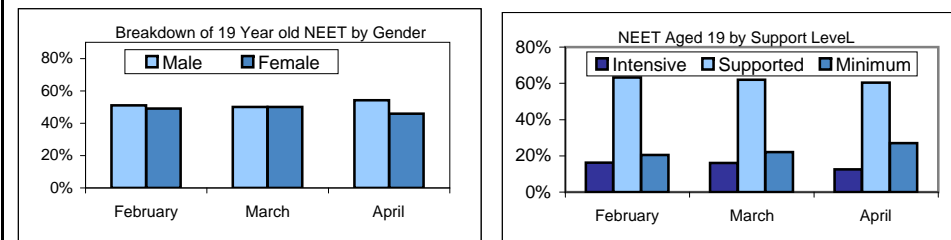
Vulnerable Group Characteristics

12	LDD	10.3%	+0.3% ↑
14	Teenage Mother	12.0%	-1.8% ↓
2	Parent	1.7%	+0.2% ↑
6	Pregnancy	5.1%	-0.2% ↓
4	Supervised by YOTS	3.4%	+0.4% ↑
2	Care Leaver	1.7%	+1% ↑
0	Substance misuse	0.0%	+0% ⇌
2	Young Carer	1.7%	+0.2% ↑
0	Refugee/Asylum Seeker	0.0%	+0% ⇌
0	Teenage Father	0.0%	-0.8% ↓
2	Looked After/InCare	1.7%	-0.6% ↓

NEET Aged 19

The Adjusted NEET Figure is 5.4% (63 Adj).

The unadjusted NEET Total is 48 and the Not Known is 13.09% (164)



Gender

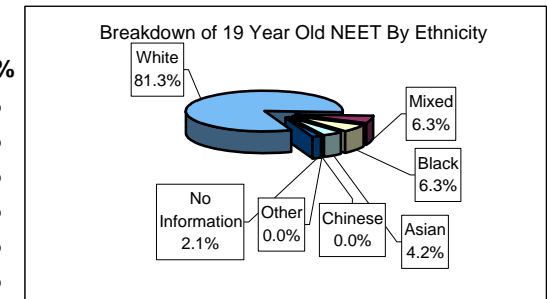
54.2% (26) are Male
45.8% (22) are Female

Support level

27.1% (13) Minimum
60.4% (29) Supported
12.5% (6) Intensive

Ethnic Origin

39	White	81.3%
3	Mixed	6.3%
3	Black	6.3%
2	Asian	4.2%
0	Chinese	0.0%
0	Other	0.0%
1	No Information	2.1%



19 year Old Vulnerable Group Characteristics

3	LDD	6.3%	-5.8% ↓
9	Teenage Mother	18.8%	-1.3% ↓
0	Parent	0.0%	+0% ⇌
2	Pregnancy	4.2%	+0.2% ↑
5	Supervised by YOTS	10.4%	-1.6% ↓
0	Care Leaver	0.0%	+0% ⇌
0	Substance misuse	0.0%	+0% ⇌
1	Young Carer	2.1%	+0.1% ↑
0	Refugee/Asylum Seeker	0.0%	+0% ⇌
1	Teenage Father	2.1%	-1.9% ↓
0	Looked After/InCare	0.0%	+0% ⇌

NEET Aged 16-18

Availability

87.2% (102) of the NEET group are available to the labour market.

75	Seeking employment, education or training	73.5%	+0.6%	↑
0	Waged PDOs	0.0%	+0%	↔
11	Other PDOs	10.8%	-0.9%	↓
4	Not yet ready for work or learning	3.9%	-1.5%	↓
0	Awaiting an E2E place	0.0%	-1.8%	↓
1	Awaiting sub level 2 place	1.0%	+1%	↑
8	Awaiting level 2 place	7.8%	+1.5%	↑
1	Awaiting level 3+ place	1.0%	+1%	↑
2	Start Date agreed	2.0%	+0.2%	↑
0	Activity Agreement	0.0%	+0%	↔
0	New Deal Gateway	0.0%	+0%	↔

12.8% (15) are not available to the labour market.

1	Young carers	6.7%	+1.7%	↑
12	Teenage parents	80.0%	+20%	↑
1	Illness	6.7%	-18.3%	↓
1	Pregnancy	6.7%	-3.3%	↓
0	Religious grounds	0.0%	+0%	↔
0	Unlikely to be economically active	0.0%	+0%	↔
0	Other reason	0.0%	+0%	↔

4	Other (not EET or NEET)	3.4%	+1.9%	↑
4	Custody	3.4%	+1.9%	↑
0	Refugees/Asylum seekers	0.0%	+0%	↔

NEET Joiners

12 young people joined the NEET group in April

7	From Education	58.3%	+20.8%	↑
1	From Employment	8.3%	-8.3%	↓
1	From Government supported training	8.3%	-16.7%	↔
0	From NEET in other area	0.0%	+0%	↔
3	From Other (inc custodial sentence)	25.0%	+4.2%	↑
0	From Currency re-established	0.0%	+0%	↔

NEET Leavers

17 young people left the NEET group in April

0	Into Education	0.0%	-5.6%	↓
3	Into Employment	17.7%	+1%	↑
1	Into Government Supported Training	5.9%	-38.6%	↓
0	Into NEET in other area	0.0%	+0%	↔
2	Into Custodial Sentence	11.8%	+11.8%	↑
0	Into Moved Away	0.0%	-5.6%	↓
0	Into Cannot Be Contacted	0.0%	+0%	↔
0	Into Refused to disclose activity	0.0%	+0%	↔
11	Into Currency Expired	64.7%	+36.9%	↑
0	Into Unknown Activity	0.0%	+0%	↔
0	Into Other Reason	0.0%	+0%	↔

16-18 NEET Breakdown by Top 25 Wards

14	MER - St Helier	12.0%
12	MER - Cricket Green	10.3%
12	MER - Lavender Fields	10.3%
12	MER - Longthornton	10.3%
10	MER - Ravensbury	8.6%
9	MER - Pollards Hill	7.7%
8	MER - Figge's Marsh	6.8%
6	MER - Graveney	5.1%
6	MER - Dundonald	5.1%
5	MER - West Barnes	4.3%
5	MER - Trinity	4.3%
4	MER - Colliers Wood	3.4%
3	MER - Raynes Park	2.6%
3	MER - Cannon Hill	2.6%
3	MER - Merton Park	2.6%
3	MER - Abbey	2.6%
1	MER - Wimbledon Park	0.9%
1	MER - Lower Morden	0.9%

19 year Old NEET Breakdown by Top 25 Wards

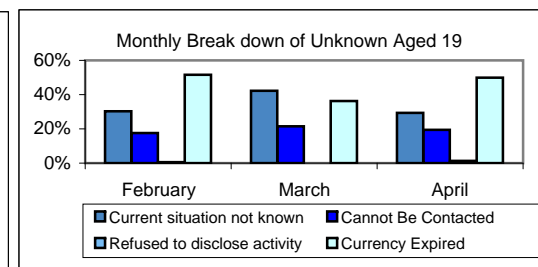
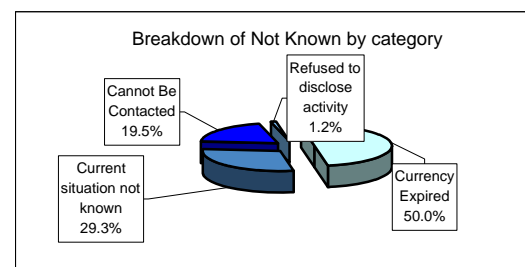
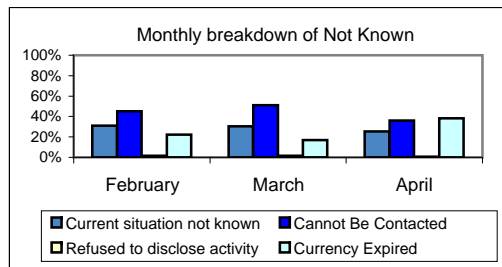
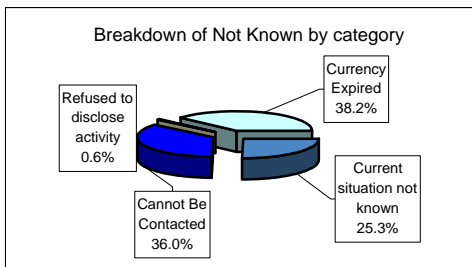
6	MER - Abbev	12.5%
5	MER - Lavender Fields	10.4%
5	MER - Longthornton	10.4%
5	MER - Ravensbury	10.4%
4	MER - St Helier	8.3%
4	MER - Colliers Wood	8.3%
3	MER - Cannon Hill	6.3%
3	MER - Wimbledon Park	6.3%
2	MER - Cricket Green	4.2%
2	MER - Pollards Hill	4.2%
2	MER - Graveney	4.2%
2	MER - Hillside	4.2%
1	MER - Dundonald	2.1%
1	MER - West Barnes	2.1%
1	MER - Trinity	2.1%
1	MER - Lower Morden	2.1%
1	MER - Village	2.1%

16-18 Not Known Breakdown

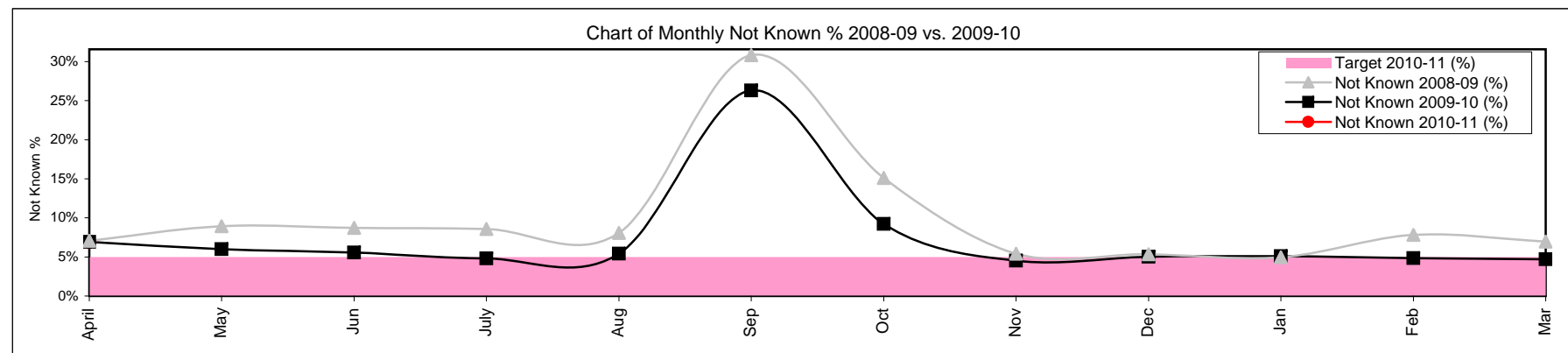
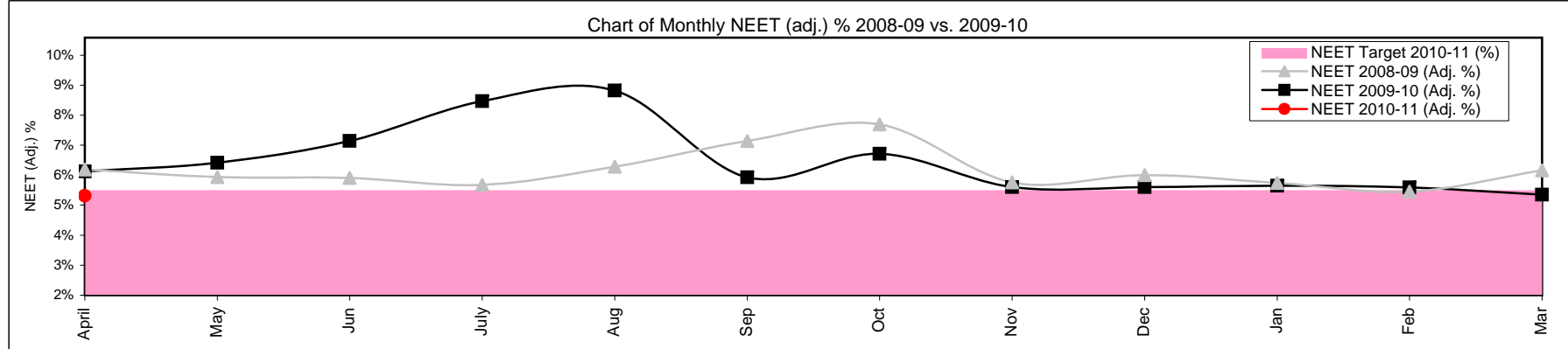
178	Not Known	6.9%	+2.2%	↑
45	Current situation not known	25.3%	-5.1%	↓
64	Cannot Be Contacted	36.0%	-15.2%	↓
1	Refused to disclose activity	0.6%	-1%	↓
68	Currency Expired	38.2%	+21.4%	↑

19 Year Old Not Known Breakdown

164	Not Known	13.1%	+4%	↑
48	Current situation not known	29.3%	-12.9%	↓
32	Cannot Be Contacted	19.5%	-2.1%	↓
2	Refused to disclose activity	1.2%	+1.2%	↑
82	Currency Expired	50.0%	+13.7%	↑



16-18 NEET Yearly Comparison	April	May	June	July	August	September	October	November	December	January	February	March
16-18 Cohort 2009-10	2360	2267	2180	2086	1990	2930	2709	2784	2706	2584	2512	2667
16-18 Cohort 2010-11	2584	0	0	0	0	0	0	0	0	0	0	0
EET 2009-10	2066	1999	1915	1817	1716	2036	2290	2505	2425	2318	2260	2409
EET 2010-11	2285	0	0	0	0	0	0	0	0	0	0	0
NEET 2009-10	126	128	140	165	161	116	162	147	141	131	128	131
NEET 2010-11	117	0	0	0	0	0	0	0	0	0	0	0
NEET 2009-10 (Adj. %)	6.12%	6.41%	7.14%	8.47%	8.82%	5.93%	6.71%	5.60%	5.60%	5.65%	5.59%	5.35%
NEET 2010-11 (Adj. %)	5.31%	0.00%	0.00%	0.00%	0.00%	0.00%	0.00%	0.00%	0.00%	0.00%	0.00%	0.00%
NEET Target 2010-11 (%)	5.50%	5.50%	5.50%	5.50%	5.50%	5.50%	5.50%	5.50%	5.50%	5.50%	5.50%	5.50%
Not Known 2009-10	163	136	121	100	108	771	250	126	136	132	122	125
Not Known 2010-11	178	0	0	0	0	0	0	0	0	0	0	0
Not Known 2009-10 (%)	6.91%	6.00%	5.55%	4.79%	5.43%	26.31%	9.23%	4.53%	5.03%	5.11%	4.86%	4.69%
Not Known 2010-11 (%)	6.89%	0.00%	0.00%	0.00%	0.00%	0.00%	0.00%	0.00%	0.00%	0.00%	0.00%	0.00%
Target 2010-11 (%)	5.00%	5.00%	5.00%	5.00%	5.00%	5.00%	5.00%	5.00%	5.00%	5.00%	5.00%	5.00%



Monthly NEET and Not Known Cohort Analysis

Definitions

1 Introduction

- 1.1 The data within this report has been compiled from the Connexions South London Client Caseload Information Systems Management Information return to the Department of Children, Schools and Families for 2010/11.

2 Definitions

- 2.1 The Not in Education, Employment or Training (NEET) cohort is defined by the following destinations:

- Any unemployed category
- Personal Development Opportunity
- Personal Development Opportunity – Waged
- Supporting Family Young Carer
- Supporting Family – Teenage Parent
- Not Available - Illness
- Pregnancy – (11 weeks to due date)
- Not Available - Religious or Cultural grounds
- Never Economically Active
- Voluntary work
- New Deal Gateway
- Not available - Other reason

2.2 The Not Known cohort is defined by the following destinations:

- Current situation Not Known
- Cannot be contacted
- Refused to provide information
- Currency expired

2.3 The Vulnerable group categories are defined as the follow target groups:

- LDD
- Teenage Parent
- Pregnancy
- Supervised by YOTS
- Care Leaver
- Substance misuse
- Young Carer
- Refugee/Asylum Seeker
- Teenage Father
- Looked After/In Care

2.4 The NEET adjusted percentage and numbers are calculated using the following formula:

- DCSF research determined that from those who lapsed from EET 92% were likely to still be EET and so the remaining 8% would be counted as NEET. For those who had lapsed from NEET, 58% were likely to have re-joined NEET and so the remaining 42% would be EET.
- This calculation is then applied to those who have lapsed to produce the adjusted NEET percentage.
- The adjusted lapsed figures are added back into the EET and NEET cohorts, the numbers are re-calculated (NEET/EET + NEET).