

April 2010 NEET and Not Known Cohort Analysis

The data contained within this report has been compiled from the Connexions South London Client Caseload Information System (CCIS) Management Information return for April 2010.

The Report provides an analysis of young people aged 16-18 and 19 years within the NEET group, detailed by the following categories :

- Gender
- Age
- Support Level
- Ethnic Origin
- Vulnerable Group Characteristics
- Top 25 Wards
- Not Known

The 16-18 NEET Group has also been analysed to show the following :

- Availability to the Labour Market
- Non availability to the Labour Market
- NEET Joiners & leavers

Overall

16-18

The Adjusted NEET figure for ages 16-18 in Kingston in April 2010 is 3%, which is a 0.1% decrease from March 2010. The actual number of NEET young people within Kingston is 99, which is a decrease in 6 young people from the March 2010 total of 105. The Not Known percentage for Kingston in April 2010 for this age range is 3.6% or 156 or young people. This is an increase of 0.5% from March 2010, where 139 (3.1%) young people were Not Known.

19 Year Olds

The Adjusted NEET figure for 19 year olds in Kingston in April 2010 is 4.2%, which is a decrease of 0.1% from March 2010. The actual number of NEET young people within Kingston is 14 which is a decrease of 1 young person from the total for March 2010. The Not Known percentage for 19 year olds in Kingston in April 2010 is 21.5% or 378 young people. This is a decrease of 4.1% from March 2010 where 465 young people were Not Known.

Gender, Age & Support Level

16-18

The 16-18 NEET totals for males in Kingston are similar to their female counterpart with 51 (51.5%) and 48 (48.5%) respectively. The majority of 16-18 NEET are 17 and 18 years old with 36.4% and 51.5% respectively. The majority of NEET in this age range were described as having a support level of "Supported" and "Intensive" with totals of 52 (52.5%) and 31 (31.3%) respectively. Only 16.2% (16) of 16-18 year old NEET were classified as having "minimum" needs.

19 Year Olds

The 19 year old NEET in Kingston are divided equally in terms of gender, with totals of 7(50%) for both male and female young people respectively. The majority of NEET in this age range were described as having a support level of "minimum" and "supported", both with totals of 5 (35.7%) respectively. The remaining 4 (28.6%) of 19 year old NEET were those classified as having "intensive" needs.

Ethnicity

16-18

The majority of 16-18 NEET in Kingston in April 2010 have an ethnicity group of White with 84 young people (84.9%). The other largest totals are from the Black and Mixed ethnic group with 6 (6.1%) and 4 (4%) respectively. The other ethnic groups make up 5% (5) of the NEET young people in this age range.

19 Year Olds

The majority of 19 year old NEET in Kingston in April 2010 have an ethnicity group of White with 10 young people (71.4%). The Black and Asian ethnic groups make up the remaining 28.5% (4) of this NEET group.

Vulnerable Groups

16-18

The highest total of NEET young people having a vulnerable group characteristic are those described as Having LDD and Supervised by YOT in April 2010 both with 11.1% (11) . The other large vulnerable group percentages of NEET young people in this age range are those described as Teenage Mothers with 7 (7.1%) young people.

19 Year Olds

The highest total of NEET young people having a vulnerable group characteristic are those described as Teenage mothers with 2 young people (14.3%).

16-18 NEET Availability

Available

In April 2010 79.8% of the total 16-18 NEET group were available to the labour market. Within this available group, 58 (73.4%) young people are described as seeking employment, education and training. The other significant totals are 6.3% (5) and 10.1% (8) for those described as NEET awaiting an E2E place and NEET not ready for work or learning respectively.

Not Available

In April 2010 20.2% of the total 16-18 NEET group are not available to the labour market. Within this unavailable group, 15 (75%) are described as NEET Teenage parents. The other significant totals are 15% (3) and 10% (2) for those classified as NEET illness and for those young people classified as Pregnancy respectively.

NEET Joiners & Leavers

Joiners

Of the 15 young people who joined the Kingston NEET group in April 2010, 13.3% (2) and 20% (3) are from education and employment respectively.

Leavers

Of the 18 young people who left the Kingston NEET group in April 2010, 27.8% (5) are going to Government supported training. However, the other largest percentage of the NEET leavers this month entered the currency expired with 55.6% (10) of the total young people leaving NEET.

NEET Ward Analysis

16-18

The largest number of 16-18 NEET in Kingston in April 2010 is Chessington south and Norbiton wards both with 13.1% (13) of the total NEET group respectively.

19 Year Olds

The largest number of 19 year old NEET in Kingston in April 2010 are from Grove ward with 21.4% (3).

Not Known Analysis

16-18

Of the 156 Not Known, the largest proportion have expired destination currencies with 87.2% (136). The other largest percentage are those with destination described as current situation unknown with 10.3% (16).

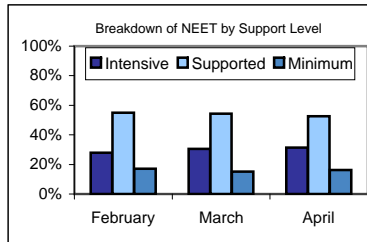
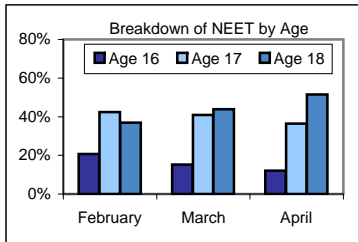
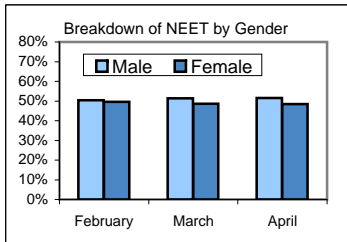
19 Year Olds

The analysis of the 378 Not Known for the 19 year olds in Kingston in April show the largest proportion have expired destination currencies with 95.5% (361). The other large percentage are those with destinations described as cannot be contacted with 2.7% (10).

NEET Aged 16-18

The Adjusted NEET Figure is 3.0% (132 Adj).

The unadjusted NEET Total is 99 and the Not Known is 3.55% (156)



Gender

51.5% (51) are Male
48.5% (48) are Female

Age

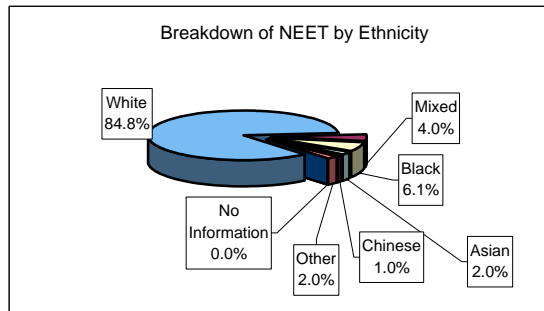
12.1% (12) are aged 16
36.4% (36) are aged 17
51.5% (51) are aged 18

Support level

16.2% (16) Minimum
52.5% (52) Supported
31.3% (31) Intensive

Ethnic Origin

| | | |
|----|----------------|-------|
| 84 | White | 84.9% |
| 4 | Mixed | 4.0% |
| 6 | Black | 6.1% |
| 2 | Asian | 2.0% |
| 1 | Chinese | 1.0% |
| 2 | Other | 2.0% |
| 0 | No Information | 0.0% |



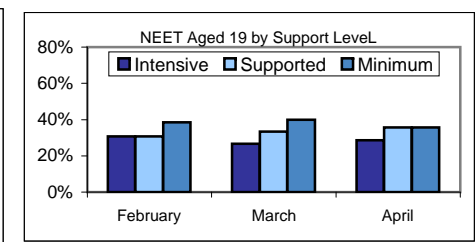
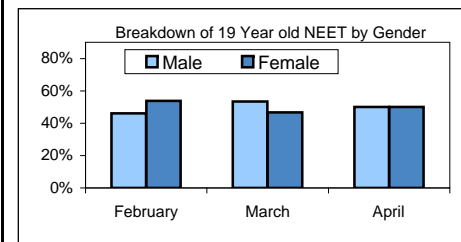
Vulnerable Group Characteristics

| | | | |
|----|-----------------------|-------|---------|
| 11 | LDD | 11.1% | -0.3% ↓ |
| 7 | Teenage Mother | 7.1% | +0.4% ↑ |
| 0 | Parent | 0.0% | +0% ⇄ |
| 6 | Pregnancy | 6.1% | -0.6% ↓ |
| 11 | Supervised by YOTS | 11.1% | +0.6% ↑ |
| 3 | Care Leaver | 3.0% | -0.8% ↓ |
| 2 | Substance misuse | 2.0% | +0.1% ↑ |
| 0 | Young Carer | 0.0% | -1% ↓ |
| 0 | Refugee/Asylum Seeker | 0.0% | +0% ⇄ |
| 1 | Teenage Father | 1.0% | +1% ↑ |
| 5 | Looked After/InCare | 5.1% | -0.7% ↓ |

NEET Aged 19

The Adjusted NEET Figure is 4.2% (73 Adj).

The unadjusted NEET Total is 14 and the Not Known is 21.50% (378)



Gender

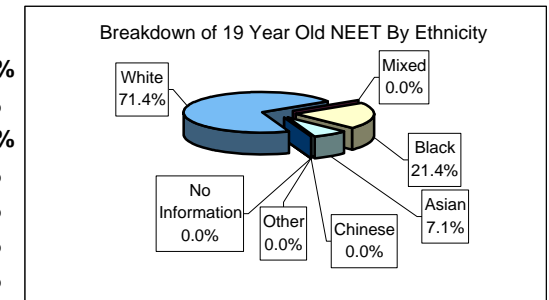
50.0% (7) are Male
50.0% (7) are Female

Support level

35.7% (5) Minimum
35.7% (5) Supported
28.6% (4) Intensive

Ethnic Origin

| | | |
|----|----------------|-------|
| 10 | White | 71.4% |
| 0 | Mixed | 0.0% |
| 3 | Black | 21.4% |
| 1 | Asian | 7.1% |
| 0 | Chinese | 0.0% |
| 0 | Other | 0.0% |
| 0 | No Information | 0.0% |



19 year Old Vulnerable Group Characteristics

| | | | |
|---|-----------------------|-------|---------|
| 1 | LDD | 7.1% | +0.5% ↑ |
| 2 | Teenage Mother | 14.3% | +1% ↑ |
| 0 | Parent | 0.0% | +0% ⇄ |
| 1 | Pregnancy | 7.1% | +0.5% ↑ |
| 0 | Supervised by YOTS | 0.0% | +0% ⇄ |
| 1 | Care Leaver | 7.1% | +7.1% ↑ |
| 0 | Substance misuse | 0.0% | +0% ⇄ |
| 1 | Young Carer | 7.1% | +0.5% ↑ |
| 0 | Refugee/Asylum Seeker | 0.0% | +0% ⇄ |
| 0 | Teenage Father | 0.0% | +0% ⇄ |
| 1 | Looked After/InCare | 7.1% | +7.1% ↑ |

NEET Aged 16-18

Availability

79.8% (79) of the NEET group are available to the labour market.

| | | | |
|----|---|-------|---------|
| 58 | Seeking employment, education or training | 73.4% | +2.3% ↑ |
| 1 | Waged PDOs | 1.3% | +0.2% ↑ |
| 2 | Other PDOs | 2.5% | -0.8% ↓ |
| 8 | Not yet ready for work or learning | 10.1% | +0.1% ↑ |
| 5 | Awaiting an E2E place | 6.3% | -1.5% ↓ |
| 0 | Awaiting sub level 2 place | 0.0% | +0% ⇄ |
| 2 | Awaiting level 2 place | 2.5% | -1.9% ↓ |
| 1 | Awaiting level 3+ place | 1.3% | +0.2% ↑ |
| 1 | Start Date agreed | 1.3% | +0.2% ↑ |
| 0 | Activity Agreement | 0.0% | +0% ⇄ |
| 1 | New Deal Gateway | 1.3% | +1.3% ↑ |

20.2% (20) are not available to the labour market.

| | | | |
|----|------------------------------------|-------|----------|
| 0 | Young carers | 0.0% | +0% ⇄ |
| 15 | Teenage parents | 75.0% | -11.7% ↓ |
| 3 | Illness | 15.0% | +8.3% ↑ |
| 2 | Pregnancy | 10.0% | +3.3% ↑ |
| 0 | Religious grounds | 0.0% | +0% ⇄ |
| 0 | Unlikely to be economically active | 0.0% | +0% ⇄ |
| 0 | Other reason | 0.0% | +0% ⇄ |

| | | | |
|---|-------------------------|------|---------|
| 2 | Other (not EET or NEET) | 2.0% | +1.1% ↑ |
| 2 | Custody | 2.0% | +1.1% ↑ |
| 0 | Refugees/Asylum seekers | 0.0% | +0% ⇄ |

NEET Joiners

15 young people joined the NEET group in April

| | | | |
|---|-------------------------------------|-------|----------|
| 2 | From Education | 13.3% | -23% ↓ |
| 3 | From Employment | 20.0% | -16.4% ↓ |
| 1 | From Government supported training | 6.7% | -7% ⇄ |
| 0 | From NEET in other area | 0.0% | +0% ⇄ |
| 1 | From Other (inc custodial sentence) | 6.7% | -7% ↓ |
| 8 | From Currency re-established | 53.3% | +53.3% ↑ |

NEET Leavers

18 young people left the NEET group in April

| | | | |
|----|------------------------------------|-------|----------|
| 0 | Into Education | 0.0% | -11.5% ↓ |
| 2 | Into Employment | 11.1% | -15.8% ↓ |
| 5 | Into Government Supported Training | 27.8% | -6.8% ↓ |
| 0 | Into NEET in other area | 0.0% | +0% ⇄ |
| 0 | Into Custodial Sentence | 0.0% | +0% ⇄ |
| 0 | Into Moved Away | 0.0% | +0% ⇄ |
| 1 | Into Cannot Be Contacted | 5.6% | +5.6% ↑ |
| 0 | Into Refused to disclose activity | 0.0% | +0% ⇄ |
| 10 | Into Currency Expired | 55.6% | +28.6% ↑ |
| 0 | Into Unknown Activity | 0.0% | +0% ⇄ |
| 0 | Into Other Reason | 0.0% | +0% ⇄ |

16-18 NEET Breakdown by Top 25 Wards

| | | |
|----|----------------------------------|-------|
| 13 | KIN - Chessington South | 13.1% |
| 13 | KIN - Norbiton | 13.1% |
| 12 | KIN - Grove | 12.1% |
| 9 | KIN - Coombe Hill | 9.1% |
| 9 | KIN - Chessington North and Hook | 9.1% |
| 8 | KIN - Tudor | 8.1% |
| 8 | KIN - Tolworth and Hook Rise | 8.1% |
| 6 | KIN - St Mark's | 6.1% |
| 5 | KIN - Coombe Vale | 5.1% |
| 4 | KIN - Beverley | 4.0% |
| 3 | KIN - Berrylands | 3.0% |
| 2 | KIN - St James | 2.0% |
| 2 | KIN - Canbury | 2.0% |
| 2 | KIN - Old Malden | 2.0% |
| 2 | KIN - Surbiton Hill | 2.0% |
| 1 | KIN - Alexandra | 1.0% |

19 year Old NEET Breakdown by Top 25 Wards

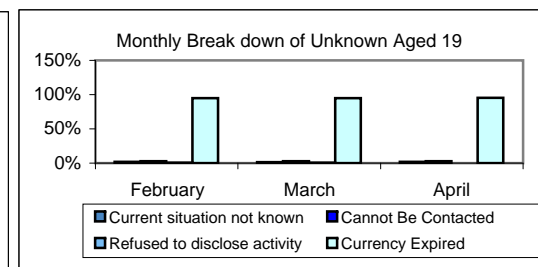
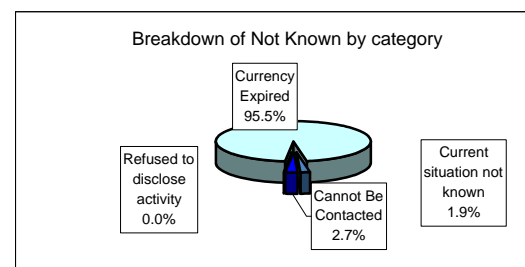
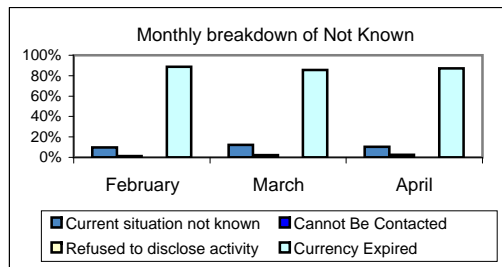
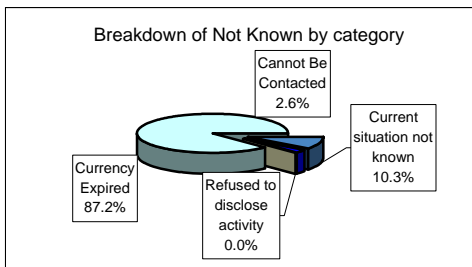
| | | |
|---|------------------------------|-------|
| 3 | KIN - Grove | 21.4% |
| 2 | KIN - Tolworth and Hook Rise | 14.3% |
| 2 | KIN - St Mark's | 14.3% |
| 2 | KIN - Beverley | 14.3% |
| 1 | KIN - Chessington South | 7.1% |
| 1 | KIN - Coombe Hill | 7.1% |
| 1 | KIN - Coombe Vale | 7.1% |
| 1 | KIN - St James | 7.1% |
| 1 | KIN - Old Malden | 7.1% |

16-18 Not Known Breakdown

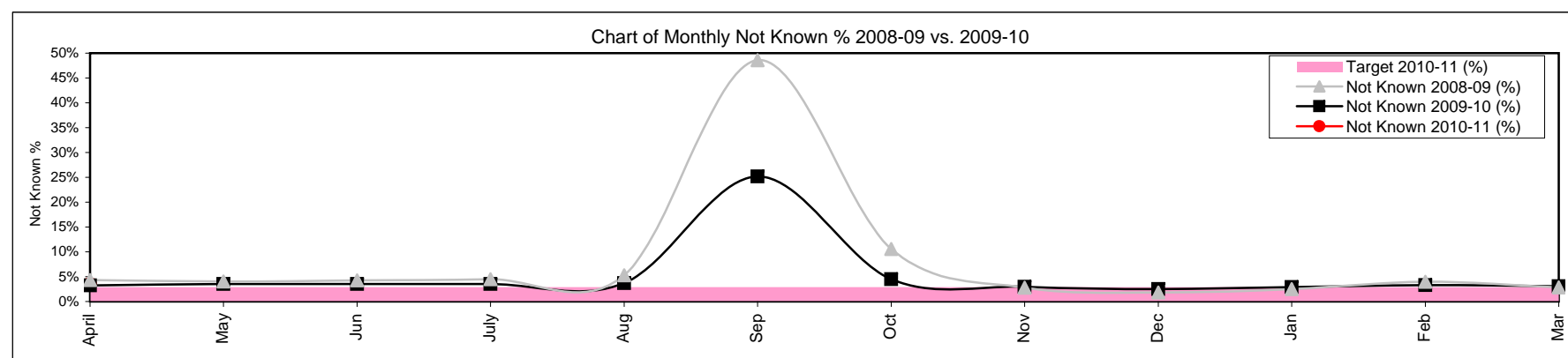
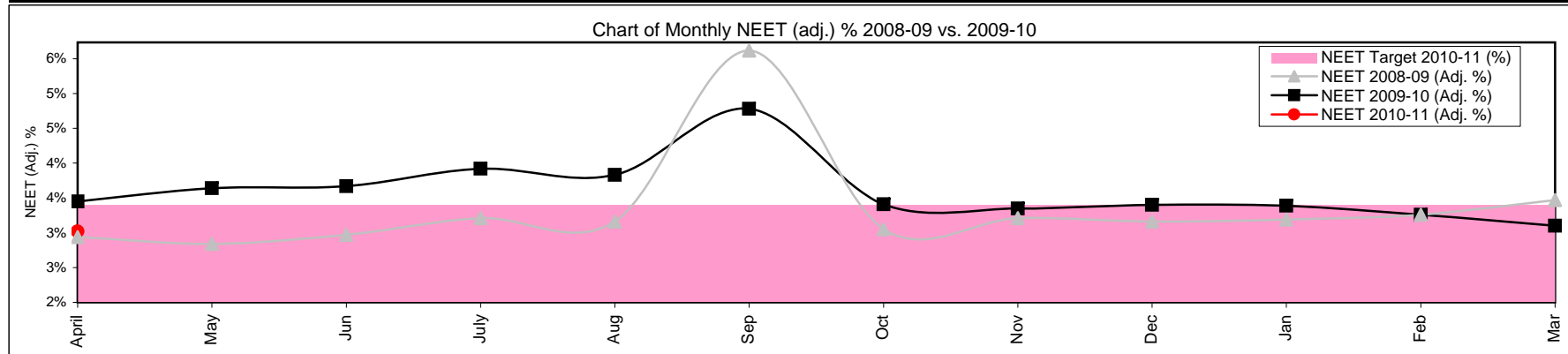
| | | | | |
|-----|------------------------------|-------|-------|---|
| 156 | Not Known | 3.6% | +0.5% | ↑ |
| 16 | Current situation not known | 10.3% | -2% | ↓ |
| 4 | Cannot Be Contacted | 2.6% | +0.4% | ↑ |
| 0 | Refused to disclose activity | 0.0% | +0% | ↔ |
| 136 | Currency Expired | 87.2% | +1.6% | ↑ |

19 Year Old Not Known Breakdown

| | | | | |
|-----|------------------------------|-------|-------|---|
| 378 | Not Known | 21.5% | -4.1% | ↓ |
| 7 | Current situation not known | 1.9% | +0.3% | ↑ |
| 10 | Cannot Be Contacted | 2.7% | -0.4% | ↓ |
| 0 | Refused to disclose activity | 0.0% | -0.4% | ↓ |
| 361 | Currency Expired | 95.5% | +0.4% | ↑ |



| 16-18 NEET Yearly Comparison | April | May | June | July | August | September | October | November | December | January | February | March |
|--------------------------------|--------------|--------------|--------------|--------------|--------------|--------------|--------------|--------------|--------------|--------------|--------------|--------------|
| 16-18 Cohort 2009-10 | 4485 | 4352 | 4227 | 4056 | 3886 | 5408 | 5221 | 5034 | 4842 | 4737 | 4644 | 4536 |
| 16-18 Cohort 2010-11 | 4393 | 0 | 0 | 0 | 0 | 0 | 0 | 0 | 0 | 0 | 0 | 0 |
| EET 2009-10 | 4215 | 4067 | 3952 | 3787 | 3625 | 3910 | 4854 | 4756 | 4587 | 4480 | 4379 | 4291 |
| EET 2010-11 | 4136 | 0 | 0 | 0 | 0 | 0 | 0 | 0 | 0 | 0 | 0 | 0 |
| NEET 2009-10 | 115 | 122 | 121 | 125 | 115 | 134 | 130 | 129 | 132 | 119 | 111 | 105 |
| NEET 2010-11 | 99 | 0 | 0 | 0 | 0 | 0 | 0 | 0 | 0 | 0 | 0 | 0 |
| NEET 2009-10 (Adj. %) | 3.45% | 3.64% | 3.67% | 3.92% | 3.83% | 4.78% | 3.41% | 3.35% | 3.40% | 3.39% | 3.26% | 3.10% |
| NEET 2010-11 (Adj. %) | 3.02% | 0.00% | 0.00% | 0.00% | 0.00% | 0.00% | 0.00% | 0.00% | 0.00% | 0.00% | 0.00% | 0.00% |
| NEET Target 2010-11 (%) | 3.40% | 3.40% | 3.40% | 3.40% | 3.40% | 3.40% | 3.40% | 3.40% | 3.40% | 3.40% | 3.40% | 3.40% |
| Not Known 2009-10 | 145 | 153 | 150 | 142 | 144 | 1361 | 234 | 148 | 122 | 137 | 152 | 139 |
| Not Known 2010-11 | 156 | 0 | 0 | 0 | 0 | 0 | 0 | 0 | 0 | 0 | 0 | 0 |
| Not Known 2009-10 (%) | 3.23% | 3.52% | 3.55% | 3.50% | 3.71% | 25.17% | 4.48% | 2.94% | 2.52% | 2.89% | 3.27% | 3.06% |
| Not Known 2010-11 (%) | 3.55% | 0.00% | 0.00% | 0.00% | 0.00% | 0.00% | 0.00% | 0.00% | 0.00% | 0.00% | 0.00% | 0.00% |
| Target 2010-11 (%) | 2.90% | 2.90% | 2.90% | 2.90% | 2.90% | 2.90% | 2.90% | 2.90% | 2.90% | 2.90% | 2.90% | 2.90% |



Monthly NEET and Not Known Cohort Analysis

Definitions

1 Introduction

- 1.1 The data within this report has been compiled from the Connexions South London Client Caseload Information Systems Management Information return to the Department of Children, Schools and Families for 2010/11.

2 Definitions

- 2.1 The Not in Education, Employment or Training (NEET) cohort is defined by the following destinations:

- Any unemployed category
- Personal Development Opportunity
- Personal Development Opportunity – Waged
- Supporting Family Young Carer
- Supporting Family – Teenage Parent
- Not Available - Illness
- Pregnancy – (11 weeks to due date)
- Not Available - Religious or Cultural grounds
- Never Economically Active
- Voluntary work
- New Deal Gateway
- Not available - Other reason

2.2 The Not Known cohort is defined by the following destinations:

- Current situation Not Known
- Cannot be contacted
- Refused to provide information
- Currency expired

2.3 The Vulnerable group categories are defined as the follow target groups:

- LDD
- Teenage Parent
- Pregnancy
- Supervised by YOTS
- Care Leaver
- Substance misuse
- Young Carer
- Refugee/Asylum Seeker
- Teenage Father
- Looked After/In Care

2.4 The NEET adjusted percentage and numbers are calculated using the following formula:

- DCSF research determined that from those who lapsed from EET 92% were likely to still be EET and so the remaining 8% would be counted as NEET. For those who had lapsed from NEET, 58% were likely to have re-joined NEET and so the remaining 42% would be EET.
- This calculation is then applied to those who have lapsed to produce the adjusted NEET percentage.
- The adjusted lapsed figures are added back into the EET and NEET cohorts, the numbers are re-calculated (NEET/EET + NEET).