

May 2010 NEET and Not Known Cohort Analysis

The data contained within this report has been compiled from the Connexions South London Client Caseload Information System (CCIS) Management Information return for May 2010.

The Report provides an analysis of young people aged 16-18 and 19 years within the NEET group, detailed by the following categories :

- Gender
- Age
- Support Level
- Ethnic Origin
- Vulnerable Group Characteristics
- Top 25 Wards
- Not Known

The 16-18 NEET Group has also been analysed to show the following :

- Availability to the Labour Market
- Non availability to the Labour Market
- NEET Joiners & leavers

Overall

16-18

The Adjusted NEET figure for ages 16-18 in Croydon in May 2010 is 7.1%, which shows is a 0.2% increase from April 2010. The actual number of NEET young people within Croydon is 457, which is a decrease in 24 young people from the May 2010 total of 481. The Not Known percentage for Croydon in May 2010 for this age range is 7% or 566 young people. This is up from April 2010, where 561 (6.5%) young people were Not Known.

19 Year Olds

The Adjusted NEET figure for 19 year olds in Croydon in May 2010 is 6.7%, which is an increase of 0.1% from April 2010. The actual number of NEET young people within Croydon is 132 which is a decrease in 7 young people from the April 2010 total of 139. The Not Known percentage for 19 year olds in Croydon in May 2010 is 18% or 673 young people. This is an increase of 0.5% from April 2010 where 670 young people were Not Known.

Gender, Age & Support Level

16-18

The 16-18 NEET totals for males in Croydon are higher than their female counterpart, with 240 (52.5%) compared to 217 (47.5%) young people respectively. The majority of 16-18 NEET are 17 (46.8%) and 18 (39%) years old. 16 year olds make up only 14.2% (65) of the total NEET cohort for May. The majority of NEET in this age range were described as having a support level of "Supported" or "Minimum", with totals of 206 (45.1%) and 210 (46%) each. Only 9% (41) of 16-18 year old NEET were classified as having "Intensive" needs.

19 Year Olds

The 19 year old NEET in Croydon are distributed contrastingly as 16-18 for gender, with totals of 63 (47.7%) and 69 (52.3%) for male and female young people respectively. The majority of NEET in this age range were described as having a support level of "Supported" or "Minimum", with totals of 54 (40.9%) and 61 (46.2%) each. The remaining 17 (12.9%) of 19 year old NEET were classified as having "Intensive" needs.

Ethnicity

16-18

The majority of 16-18 NEET in Croydon in May 2010 have an ethnic group of White, with 285 young people (62.4%). The other largest totals are from the Black and Mixed ethnic groups with 88 (19.3%) and 51 (11.2%) respectively. The other ethnic groups make up 7.3% (33) of the NEET young people in this age range.

19 Year Olds

The majority of 19 year old NEET in Croydon in May 2010 have an ethnic group of White with 78 young people (59.1%). The other largest totals are from the Mixed and Black ethnic group with 12 (9.1%) and 27 (20.5%) respectively. The remaining ethnic groups make up 11.4% (15) of the NEET young people in this age range.

Vulnerable Groups

16-18

The highest total of NEET young people in Croydon having a vulnerable group characteristic in May 2010 are those described as Supervised by YOT and Teenage mothers each with 8.5% (39). The other largest vulnerable group of NEET young people in this age range are those described as having LDD with 7% (32).

19 Year Olds

The highest total of 19 year old NEET young people in Croydon having a vulnerable group characteristic in May 2010 are those described as Teenage Mothers with 18.9% (25). The other largest vulnerable group of NEET young people in this age range are those described as being Pregnant with 6.8% (9).

16-18 NEET Availability

Available

In May 2010 85.8% of the total 16-18 NEET group are available to the labour market. Within this available group, 348 (88.8%) are described as seeking employment, education and training. The other significant percentages are 4.9% (19) and 3.1% (12) for those described as NEET other PDOs and NEET Not yet ready for work or learning respectively.

Not Available

In May 2010 14.2% of the total 16-18 NEET group are not available to the labour market. Within this unavailable group, 45 (69.2%) are described as NEET Teenage parents. The other significant totals are 15.4% (10) for those classified as NEET illness and 10.8% (7) for NEET pregnancy.

NEET Joiners & Leavers

Joiners

Of the 86 young people who joined the Croydon NEET group in May 2010, 32.6% (28) are from education and 9.3% (8) are from employment. The other largest destination type are from currency re-established destinations with 40.7% (35) of the total young people joining the NEET group this month.

Leavers

Of the 96 young people who left the Croydon NEET group in May 2010, 3.1% (3) are going to education and 17.7% (17) are going to employment. The other largest percentage of the NEET leavers this month entered the Currency expired group which make up 59.4% (57) of the total young people leaving NEET.

NEET Ward Analysis

16-18

The largest number of 16-18 NEET in Croydon in May 2010 are from the ward of Fieldway with 8.5% (39) of the total NEET group. The other largest totals are from Woodside and Broad Green wards with 8.1% (37) and 6.8% (31) of the total NEET Group.

19 Year Olds

The largest numbers of 19 year old NEET in Croydon in May 2010 are from Woodside ward with 10.6% (14) of the total NEET group respectively.

Not Known Analysis

16-18

The largest proportion of the 566 young people described as being Not Known are those having expired destinations with 54.2% (307). The other largest percentage are those with destinations described as unknowns destinations with 26% (147).

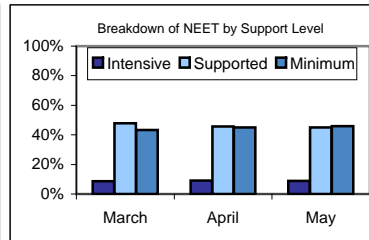
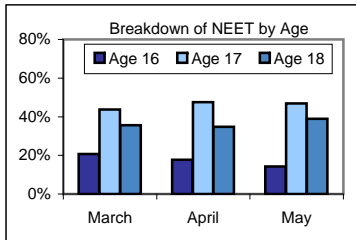
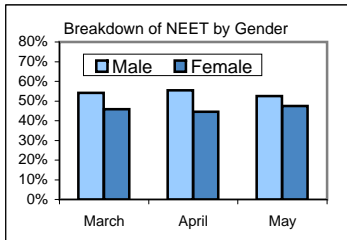
19 Year Olds

The breakdown of the 673 Not Known for the 19 year olds in Croydon in May show the largest proportion have expired destination currencies with 64.3% (433). The other largest percentage are those with destinations described as cannot be contacted with 19.5% (131).

NEET Aged 16-18

The Adjusted NEET Figure is 7.1% (552 Adj).

The unadjusted NEET Total is 457 and the Not Known is 7.00% (566)



Gender

52.5% (240) are Male
47.5% (217) are Female

Age

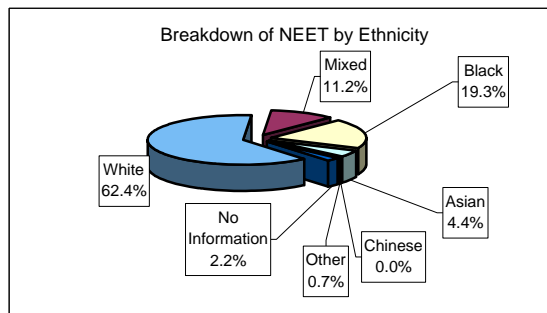
14.2% (65) are aged 16
46.8% (214) are aged 17
39.0% (178) are aged 18

Support level

46.0% (210) Minimum
45.1% (206) Supported
9.0% (41) Intensive

Ethnic Origin

285	White	62.4%
51	Mixed	11.2%
88	Black	19.3%
20	Asian	4.4%
0	Chinese	0.0%
3	Other	0.7%
10	No Information	2.2%



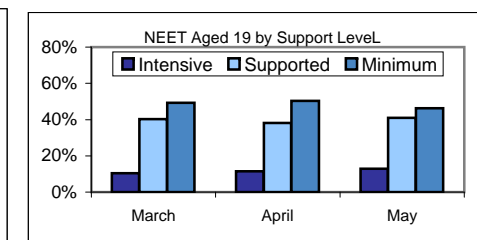
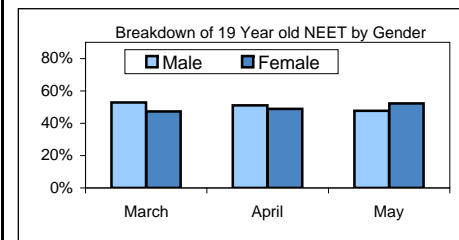
Vulnerable Group Characteristics

32	LDD	7.0%	-0.5% ↓
39	Teenage Mother	8.5%	+3.5% ↑
0	Parent	0.0%	+0% ⇄
20	Pregnancy	4.4%	-1.2% ↓
39	Supervised by YOTS	8.5%	+0.6% ↑
8	Care Leaver	1.8%	-0.1% ↓
2	Substance misuse	0.4%	+0% ↑
0	Young Carer	0.0%	-0.2% ↓
2	Refugee/Asylum Seeker	0.4%	+0% ↑
2	Teenage Father	0.4%	+0.2% ↑
12	Looked After/InCare	2.6%	+0.6% ↑

NEET Aged 19

The Adjusted NEET Figure is 6.7% (236 Adj).

The unadjusted NEET Total is 132 and the Not Known is 17.96% (673)



Gender

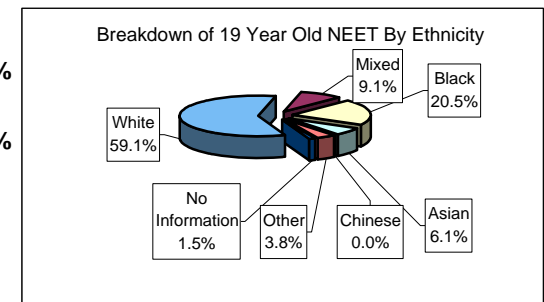
47.7% (63) are Male
52.3% (69) are Female

Support level

46.2% (61) Minimum
40.9% (54) Supported
12.9% (17) Intensive

Ethnic Origin

78	White	59.1%
12	Mixed	9.1%
27	Black	20.5%
8	Asian	6.1%
0	Chinese	0.0%
5	Other	3.8%
2	No Information	1.5%



19 year Old Vulnerable Group Characteristics

10	LDD	7.6%	-0.3% ↓
25	Teenage Mother	18.9%	+3.1% ↑
0	Parent	0.0%	+0% ⇄
9	Pregnancy	6.8%	-2.5% ↓
7	Supervised by YOTS	5.3%	-0.5% ↓
5	Care Leaver	3.8%	+0.2% ↑
0	Substance misuse	0.0%	+0% ⇄
3	Young Carer	2.3%	+0.1% ↑
0	Refugee/Asylum Seeker	0.0%	-0.7% ↓
0	Teenage Father	0.0%	-0.7% ↓
2	Looked After/InCare	1.5%	+0.8% ↑

NEET Aged 16-18

Availability

85.8% (392) of the NEET group are available to the labour market.

348	Seeking employment, education or training	88.8%	-2.5% ↓
0	Waged PDOs	0.0%	+0% ⇄
19	Other PDOs	4.9%	+1.3% ↑
12	Not yet ready for work or learning	3.1%	+0.5% ↑
1	Awaiting an E2E place	0.3%	+0% ↑
0	Awaiting sub level 2 place	0.0%	+0% ⇄
5	Awaiting level 2 place	1.3%	+0.6% ↑
5	Awaiting level 3+ place	1.3%	+0.3% ↑
2	Start Date agreed	0.5%	-0.2% ↓
0	Activity Agreement	0.0%	+0% ⇄
0	New Deal Gateway	0.0%	+0% ⇄

14.2% (65) are not available to the labour market.

0	Young carers	0.0%	+0% ⇄
45	Teenage parents	69.2%	+8.9% ↑
10	Illness	15.4%	-1.9% ↓
7	Pregnancy	10.8%	-8.2% ↓
1	Religious grounds	1.5%	-0.2% ↓
2	Unlikely to be economically active	3.1%	+1.4% ↑
0	Other reason	0.0%	+0% ⇄

17	Other (not EET or NEET)	3.7%	-0% ↓
----	-------------------------	------	-------

17	Custody	3.7%	-0% ↓
0	Refugees/Asylum seekers	0.0%	+0% ⇄

NEET Joiners

86 young people joined the NEET group in May

28	From Education	32.6%	-0.3% ↓
8	From Employment	9.3%	-0.1% ↓
3	From Government supported training	3.5%	-12.1% ↓
1	From NEET in other area	1.2%	+1.2% ↑
11	From Other (inc custodial sentence)	12.8%	-4.4% ↓
35	From Currency re-established	40.7%	+15.7% ↑

NEET Leavers

96 young people left the NEET group in May

3	Into Education	3.1%	-2.1% ↓
17	Into Employment	17.7%	+8.3% ↑
11	Into Government Supported Training	11.5%	-2.1% ↓
1	Into NEET in other area	1.0%	+0% ⇄
1	Into Custodial Sentence	1.0%	+1% ↑
5	Into Moved Away	5.2%	+3.1% ↑
0	Into Cannot Be Contacted	0.0%	+0% ⇄
0	Into Refused to disclose activity	0.0%	+0% ⇄
57	Into Currency Expired	59.4%	-9.4% ↓
0	Into Unknown Activity	0.0%	+0% ⇄
1	Into Other Reason	1.0%	+1% ↑

16-18 NEET Breakdown by Top 25 Wards

39	CRO - Fieldway	8.5%
37	CRO - Woodside	8.1%
31	CRO - Broad Green	6.8%
31	CRO - Selhurst	6.8%
25	CRO - Thornton Heath	5.5%
25	CRO - Fairfield	5.5%
24	CRO - Waddon	5.3%
24	CRO - Ashburton	5.3%
23	CRO - New Addington	5.0%
22	CRO - West Thornton	4.8%
22	CRO - Shirley	4.8%
19	CRO - South Norwood	4.2%
18	CRO - Upper Norwood	3.9%
18	CRO - Croham	3.9%
15	CRO - Coulsdon East	3.3%
14	CRO - Heathfield	3.1%
13	CRO - Benscham Manor	2.8%
12	CRO - Kenley	2.6%
10	CRO - Coulsdon West	2.2%
9	CRO - Addiscombe	2.0%
9	CRO - Norbury	2.0%
7	CRO - Sanderstead	1.5%
6	CRO - Selsdon and Ballards	1.3%
4	CRO - Purley	0.9%

19 year Old NEET Breakdown by Top 25 Wards

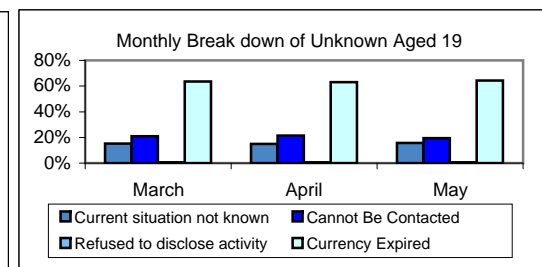
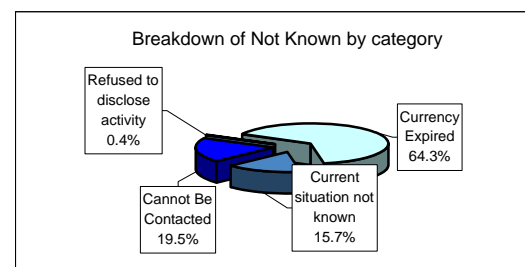
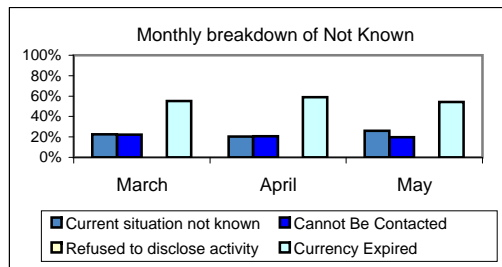
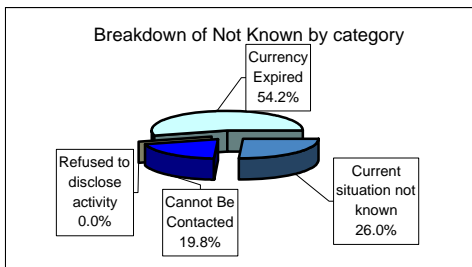
14	CRO - Woodside	10.6%
11	CRO - Broad Green	8.3%
11	CRO - Fairfield	8.3%
10	CRO - New Addington	7.6%
9	CRO - Fieldway	6.8%
9	CRO - Selhurst	6.8%
8	CRO - Waddon	6.1%
7	CRO - Thornton Heath	5.3%
7	CRO - West Thornton	5.3%
7	CRO - Addiscombe	5.3%
6	CRO - Ashburton	4.6%
6	CRO - Benscham Manor	4.6%
5	CRO - South Norwood	3.8%
4	CRO - Heathfield	3.0%
3	CRO - Coulsdon East	2.3%
3	CRO - Kenley	2.3%
3	CRO - Sanderstead	2.3%
3	CRO - Purley	2.3%
2	CRO - Upper Norwood	1.5%
2	CRO - Norbury	1.5%
1	CRO - Croham	0.8%
1	CRO - Coulsdon West	0.8%

16-18 Not Known Breakdown

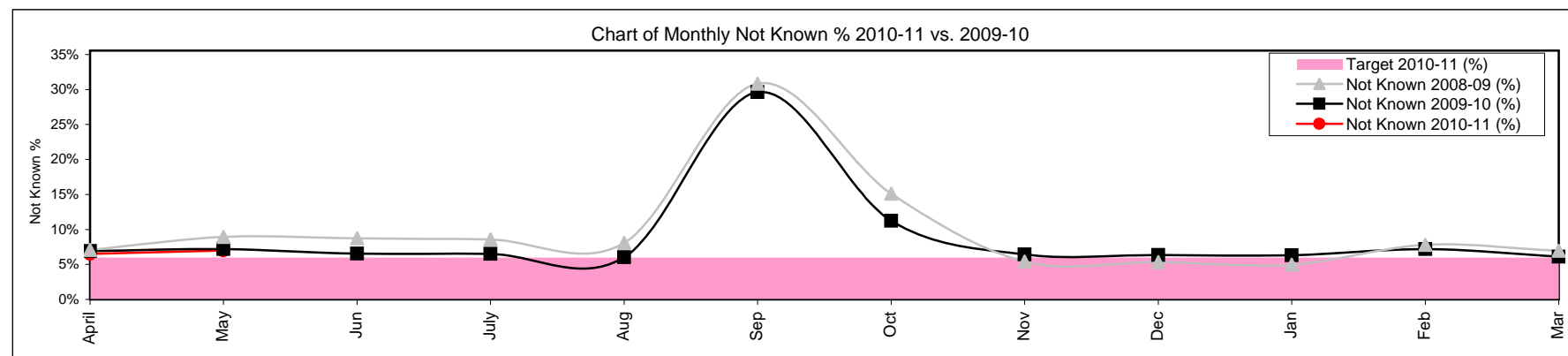
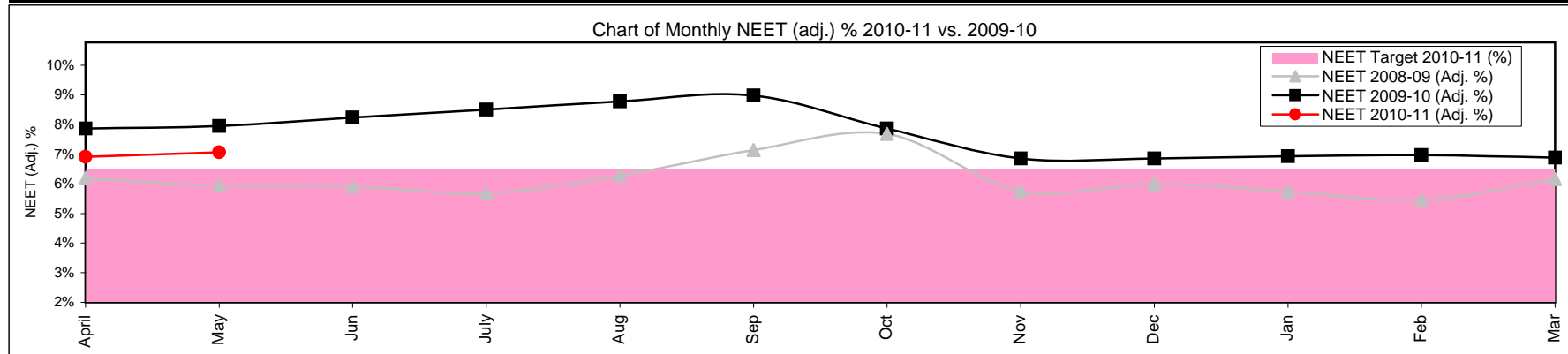
566	Not Known	7.0%	+0.5%	↑
147	Current situation not known	26.0%	+5.7%	↑
112	Cannot Be Contacted	19.8%	-0.9%	↓
0	Refused to disclose activity	0.0%	+0%	↔
307	Currency Expired	54.2%	-4.8%	↓

19 Year Old Not Known Breakdown

673	Not Known	18.0%	+0.4%	↑
106	Current situation not known	15.8%	+0.7%	↑
131	Cannot Be Contacted	19.5%	-1.9%	↓
3	Refused to disclose activity	0.5%	+0%	↔
433	Currency Expired	64.3%	+1.2%	↑



16-18 NEET Yearly Comparison	April	May	June	July	August	September	October	November	December	January	February	March
16-18 Cohort 2009-10	8614	8270	7977	7615	7272	10178	9294	10213	9822	9479	9235	8991
16-18 Cohort 2010-11	8633	8089	0	0	0	0	0	0	0	0	0	0
EET 2009-10	7452	7136	6884	6546	6263	6550	7626	8919	8587	8304	8023	7895
EET 2010-11	7573	7049	0	0	0	0	0	0	0	0	0	0
NEET 2009-10	560	528	556	559	554	603	605	618	588	562	525	526
NEET 2010-11	481	457	0	0	0	0	0	0	0	0	0	0
NEET 2009-10 (Adj. %)	7.87%	7.95%	8.24%	8.51%	8.78%	8.98%	7.87%	6.86%	6.86%	6.93%	6.97%	6.88%
NEET 2010-11 (Adj. %)	6.91%	7.07%	0.00%	0.00%	0.00%	0.00%	0.00%	0.00%	0.00%	0.00%	0.00%	0.00%
NEET Target 2010-11 (%)	6.50%	6.50%	6.50%	6.50%	6.50%	6.50%	6.50%	6.50%	6.50%	6.50%	6.50%	6.50%
Not Known 2009-10	595	594	523	494	439	3016	1044	655	625	596	663	550
Not Known 2010-11	561	566	0	0	0	0	0	0	0	0	0	0
Not Known 2009-10 (%)	6.91%	7.18%	6.56%	6.49%	6.04%	29.63%	11.23%	6.41%	6.36%	6.29%	7.18%	6.12%
Not Known 2010-11 (%)	6.50%	7.00%	0.00%	0.00%	0.00%	0.00%	0.00%	0.00%	0.00%	0.00%	0.00%	0.00%
Target 2010-11 (%)	6.00%	6.00%	6.00%	6.00%	6.00%	6.00%	6.00%	6.00%	6.00%	6.00%	6.00%	6.00%



Monthly NEET and Not Known Cohort Analysis

Definitions

1 Introduction

- 1.1 The data within this report has been compiled from the Connexions South London Client Caseload Information Systems Management Information return to the Department for Education for 2010/11.

2 Definitions

- 2.1 The Not in Education, Employment or Training (NEET) cohort is defined by the following destinations:

- Any unemployed category
- Personal Development Opportunity
- Personal Development Opportunity – Waged
- Supporting Family Young Carer
- Supporting Family – Teenage Parent
- Not Available - Illness
- Pregnancy – (11 weeks to due date)
- Not Available - Religious or Cultural grounds
- Never Economically Active
- Voluntary work
- New Deal Gateway
- Not available - Other reason

2.2 The Not Known cohort is defined by the following destinations:

- Current situation Not Known
- Cannot be contacted
- Refused to provide information
- Currency expired

2.3 The Vulnerable group categories are defined as the follow target groups:

- LDD
- Teenage Parent
- Pregnancy
- Supervised by YOTS
- Care Leaver
- Substance misuse
- Young Carer
- Refugee/Asylum Seeker
- Teenage Father
- Looked After/In Care

2.4 The NEET adjusted percentage and numbers are calculated using the following formula:

- DfE research determined that from those who lapsed from EET 92% were likely to still be EET and so the remaining 8% would be counted as NEET. For those who had lapsed from NEET, 58% were likely to have re-joined NEET and so the remaining 42% would be EET.
- This calculation is then applied to those who have lapsed to produce the adjusted NEET percentage.
- The adjusted lapsed figures are added back into the EET and NEET cohorts, the numbers are re-calculated (NEET/EET + NEET).