

## April 2010 NEET and Not Known Cohort Analysis

The data contained within this report has been compiled from the Connexions South London Client Caseload Information System (CCIS) Management Information return for April 2010.

The Report provides an analysis of young people aged 16-18 and 19 years within the NEET group, detailed by the following categories :

- Gender
- Age
- Support Level
- Ethnic Origin
- Vulnerable Group Characteristics
- Top 25 Wards
- Not Known

The 16-18 NEET Group has also been analysed to show the following :

- Availability to the Labour Market
- Non availability to the Labour Market
- NEET Joiners & leavers

## Overall

### 16-18

The Adjusted NEET figure for ages 16-18 in Croydon in April 2010 is 6.9%, which shows no change from March 2010. The actual number of NEET young people within Croydon is 481, which is a decrease in 45 young people from the April 2010 total of 526. The Not Known percentage for Croydon in April 2010 for this age range is 6.5% or 561 young people. This is up from March 2010, where 550 (6.1%) young people were Not Known.

### 19 Year Olds

The Adjusted NEET figure for 19 year olds in Croydon in April 2010 is 6.6%, which is a decrease of 0.1% from March 2010. The actual number of NEET young people within Croydon is 139 which is a decrease in 5 young people from the March 2010 total of 144. The Not Known percentage for 19 year olds in Croydon in April 2010 is 17.5% or 670 young people. This is an increase of 0.6% from March 2010 where 644 young people were Not Known.

## Gender, Age & Support Level

### 16-18

The 16-18 NEET totals for males in Croydon are higher than their female counterpart, with 267 (55.5%) compared to 214 (44.5%) young people respectively. The majority of 16-18 NEET are 17 (47.6%) and 18 (34.7%) years old. 16 year olds make up only 17.7% (85) of the total NEET cohort for April. The majority of NEET in this age range were described as having a support level of "Supported" or "Minimum", with totals of 220 (45.7%) and 217 (45.7%) each. Only 9.2% (44) of 16-18 year old NEET were classified as having "Intensive" needs.

### 19 Year Olds

The 19 year old NEET in Croydon are distributed similarly as 16-18 for gender, with totals of 71 (51.1%) and 68 (48.9%) for male and female young people respectively. The majority of NEET in this age range were described as having a support level of "Supported" or "Minimum", with totals of 53 (38.1%) and 70 (50.4%) each. The remaining 16 (11.5%) of 19 year old NEET were classified as having "Intensive" needs.

## Ethnicity

### 16-18

The majority of 16-18 NEET in Croydon in April 2010 have an ethnic group of White, with 299 young people (62.2%). The other largest totals are from the Black and Mixed ethnic groups with 82 (17.1%) and 68 (14.1%) respectively. The other ethnic groups make up 6.6% (32) of the NEET young people in this age range.

### 19 Year Olds

The majority of 19 year old NEET in Croydon in April 2010 have an ethnic group of White with 82 young people (59%). The other largest totals are from the Mixed and Black ethnic group with 12 (8.6%) and 31 (22.3%) respectively. The remaining ethnic groups make up 10.1% (14) of the NEET young people in this age range.

## Vulnerable Groups

### 16-18

The highest total of NEET young people in Croydon having a vulnerable group characteristic in April 2010 are those described as Supervised by YOTS with 7.9% (38). The other largest vulnerable group of NEET young people in this age range are those described as having LDD with 7.5% (36) and Pregnancy with 5.6% (27) respectively.

### 19 Year Olds

The highest total of 19 year old NEET young people in Croydon having a vulnerable group characteristic in April 2010 are those described as Teenage Mothers with 15.8% (22). The other largest vulnerable group of NEET young people in this age range are those described as being Pregnant with 9.4% (13).

## 16-18 NEET Availability

### Available

In April 2010 87.9% of the total 16-18 NEET group are available to the labour market. Within this available group, 386 (91.3%) are described as seeking employment, education and training. The other significant percentages are 3.6% (15) and 2.6% (11) for those described as NEET other PDOs and NEET Not yet ready for work or learning respectively.

### Not Available

In April 2010 12.1% of the total 16-18 NEET group are not available to the labour market. Within this unavailable group, 35 (60.3%) are described as NEET Teenage parents. The other significant totals are 17.2% (10) for those classified as NEET illness and 19% (11) for NEET pregnancy.

## NEET Joiners & Leavers

### Joiners

Of the 64 young people who joined the Croydon NEET group in April 2010, 32.8% (21) are from education and 9.4% (6) are from employment. The other largest destination type are from currency re-established destinations with 25% (16) of the total young people joining the NEET group this month.

### Leavers

Of the 96 young people who left the Croydon NEET group in April 2010, 5.2% (5) are going to education and 9.4% (9) are going to employment. The other largest percentage of the NEET leavers this month entered the Currency expired group which make up 68.8% (66) of the total young people leaving NEET.

## NEET Ward Analysis

### 16-18

The largest number of 16-18 NEET in Croydon in April 2010 are from the ward of Woodside with 8.5% (41) of the total NEET group. The other largest totals are from Fieldway and Broad Green wards with 8.1% (39) and 6.7% (32) of the total NEET Group.

### 19 Year Olds

The largest numbers of 19 year old NEET in Croydon in April 2010 are from Woodside ward with 10.8% (15) of the total NEET group respectively.

## Not Known Analysis

### 16-18

The largest proportion of the 561 young people described as being Not Known are those having expired destinations with 59% (331). The other largest percentage are those with destinations described as cannot be contacted with 20.7% (116).

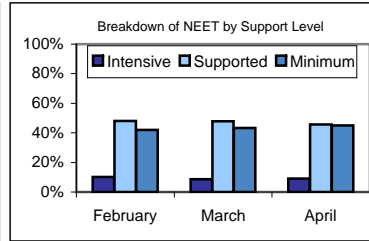
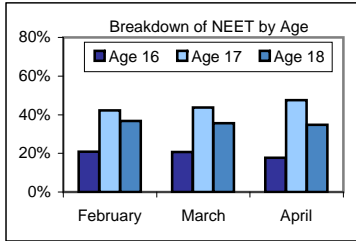
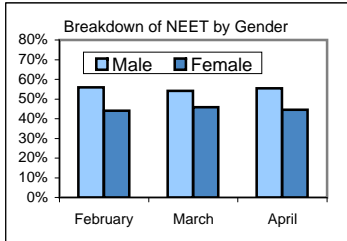
### 19 Year Olds

The breakdown of the 670 Not Known for the 19 year olds in Croydon in April show the largest proportion have expired destination currencies with 63.1% (423). The other largest percentage are those with destinations described as cannot be contacted with 21.3% (143).

### NEET Aged 16-18

The Adjusted NEET Figure is 6.9% (579 Adj).

The unadjusted NEET Total is 481 and the Not Known is 6.50% (561)



#### Gender

55.5% (267) are Male

44.5% (214) are Female

#### Age

17.7% (85) are aged 16

47.6% (229) are aged 17

34.7% (167) are aged 18

#### Support level

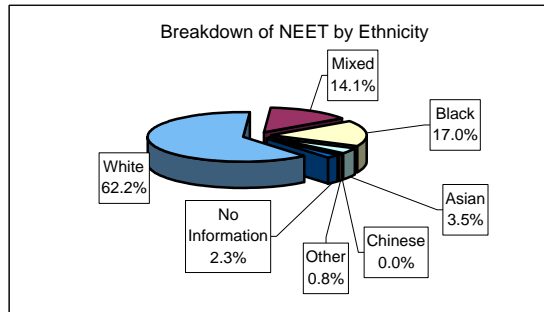
45.1% (217) Minimum

45.7% (220) Supported

9.2% (44) Intensive

#### Ethnic Origin

299	White	62.2%
68	Mixed	14.1%
82	Black	17.1%
17	Asian	3.5%
0	Chinese	0.0%
4	Other	0.8%
11	No Information	2.3%



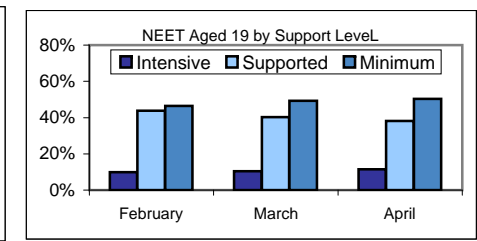
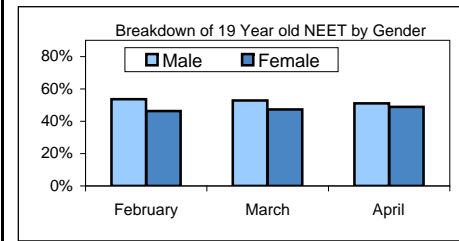
#### Vulnerable Group Characteristics

36	LDD	7.5%	-1.1% ↓
24	Teenage Mother	5.0%	-1.3% ↓
0	Parent	0.0%	+0% ⇄
27	Pregnancy	5.6%	-0.9% ↓
38	Supervised by YOTS	7.9%	+0.5% ↑
9	Care Leaver	1.9%	-0% ↓
2	Substance misuse	0.4%	+0.2% ↑
1	Young Carer	0.2%	+0% ↑
2	Refugee/Asylum Seeker	0.4%	+0% ↑
1	Teenage Father	0.2%	+0% ↑
10	Looked After/InCare	2.1%	+0.4% ↑

### NEET Aged 19

The Adjusted NEET Figure is 6.6% (237 Adj).

The unadjusted NEET Total is 139 and the Not Known is 17.53% (670)



#### Gender

51.1% (71) are Male

48.9% (68) are Female

#### Support level

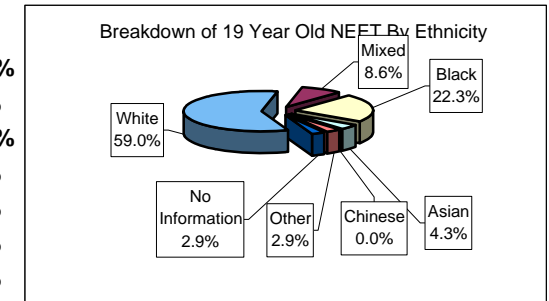
50.4% (70) Minimum

38.1% (53) Supported

11.5% (16) Intensive

#### Ethnic Origin

82	White	59.0%
12	Mixed	8.6%
31	Black	22.3%
6	Asian	4.3%
0	Chinese	0.0%
4	Other	2.9%
4	No Information	2.9%



#### 19 year Old Vulnerable Group Characteristics

11	LDD	7.9%	-0.4% ↓
22	Teenage Mother	15.8%	+2.6% ↑
0	Parent	0.0%	+0% ⇄
13	Pregnancy	9.4%	+3.1% ↑
8	Supervised by YOTS	5.8%	-0.5% ↓
5	Care Leaver	3.6%	+0.1% ↑
0	Substance misuse	0.0%	+0% ⇄
3	Young Carer	2.2%	+0.1% ↑
1	Refugee/Asylum Seeker	0.7%	-1.4% ↓
1	Teenage Father	0.7%	-0.7% ↓
1	Looked After/InCare	0.7%	-0.7% ↓

## NEET Aged 16-18

### Availability

87.9% (423) of the NEET group are available to the labour market.

386	Seeking employment, education or training	91.3%	+1.1% ↑
0	Waged PDOs	0.0%	+0% ⇄
15	Other PDOs	3.6%	-0.2% ↓
11	Not yet ready for work or learning	2.6%	-1.1% ↓
1	Awaiting an E2E place	0.2%	-0.2% ↓
0	Awaiting sub level 2 place	0.0%	+0% ⇄
3	Awaiting level 2 place	0.7%	-0.2% ↓
4	Awaiting level 3+ place	1.0%	+0.3% ↑
3	Start Date agreed	0.7%	+0.3% ↑
0	Activity Agreement	0.0%	+0% ⇄
0	New Deal Gateway	0.0%	+0% ⇄

12.1% (58) are not available to the labour market.

0	Young carers	0.0%	+0% ⇄
35	Teenage parents	60.3%	-4% ↓
10	Illness	17.2%	-1.3% ↓
11	Pregnancy	19.0%	+4.7% ↑
1	Religious grounds	1.7%	+0.3% ↑
1	Unlikely to be economically active	1.7%	+0.3% ↑
0	Other reason	0.0%	+0% ⇄
18	Other (not EET or NEET)	3.7%	-0.1% ↓
18	Custody	3.7%	-0.1% ↓
0	Refugees/Asylum seekers	0.0%	+0% ⇄

### NEET Joiners

64 young people joined the NEET group in April

21	From Education	32.8%	-8.5% ↓
6	From Employment	9.4%	-0.4% ↑
10	From Government supported training	15.6%	+6.9% ↑
0	From NEET in other area	0.0%	+0% ⇄
11	From Other (inc custodial sentence)	17.2%	-23% ↓
16	From Currency re-established	25.0%	+25% ↑

### NEET Leavers

96 young people left the NEET group in April

5	Into Education	5.2%	-1.7% ↓
9	Into Employment	9.4%	-15.6% ↓
13	Into Government Supported Training	13.5%	-11.5% ↓
1	Into NEET in other area	1.0%	+1% ↑
0	Into Custodial Sentence	0.0%	+0% ⇄
2	Into Moved Away	2.1%	-4.9% ↓
0	Into Cannot Be Contacted	0.0%	+0% ⇄
0	Into Refused to disclose activity	0.0%	+0% ⇄
66	Into Currency Expired	68.8%	+34% ↑
0	Into Unknown Activity	0.0%	+0% ⇄
0	Into Other Reason	0.0%	-1.4% ↓

**16-18 NEET Breakdown by Top 25 Wards**

41	CRO - Woodside	8.5%
39	CRO - Fieldway	8.1%
32	CRO - Broad Green	6.7%
30	CRO - New Addington	6.2%
28	CRO - West Thornton	5.8%
27	CRO - Selhurst	5.6%
25	CRO - Ashburton	5.2%
23	CRO - Thornton Heath	4.8%
23	CRO - Coulsdon East	4.8%
21	CRO - Shirley	4.4%
19	CRO - Waddon	4.0%
19	CRO - Fairfield	4.0%
19	CRO - Upper Norwood	4.0%
19	CRO - Croham	4.0%
18	CRO - Kenley	3.7%
18	CRO - South Norwood	3.7%
16	CRO - Bensham Manor	3.3%
14	CRO - Heathfield	2.9%
11	CRO - Addiscombe	2.3%
11	CRO - Norbury	2.3%
11	CRO - Coulsdon West	2.3%
9	CRO - Sanderstead	1.9%
4	CRO - Selsdon and Ballards	0.8%
3	CRO - Purley	0.6%
1	Unknown Ward	0.2%

**19 year Old NEET Breakdown by Top 25 Wards**

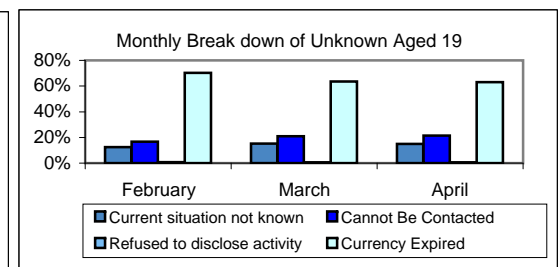
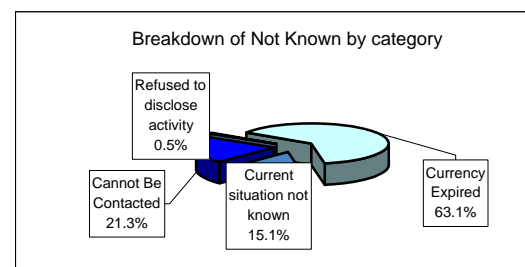
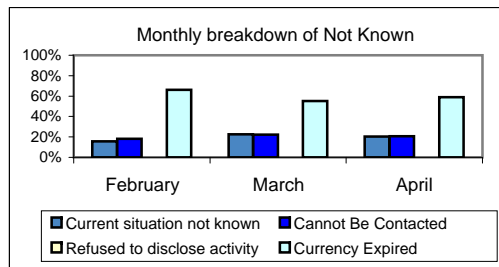
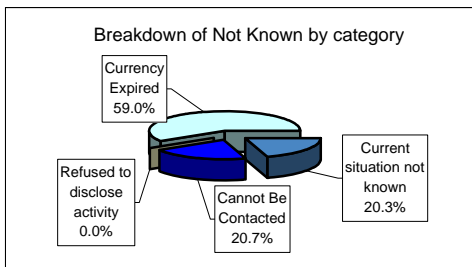
15	CRO - Woodside	10.8%
12	CRO - Broad Green	8.6%
11	CRO - Fieldway	7.9%
10	CRO - Fairfield	7.2%
9	CRO - New Addington	6.5%
9	CRO - Selhurst	6.5%
8	CRO - Ashburton	5.8%
8	CRO - Waddon	5.8%
8	CRO - South Norwood	5.8%
7	CRO - West Thornton	5.0%
7	CRO - Thornton Heath	5.0%
6	CRO - Bensham Manor	4.3%
6	CRO - Addiscombe	4.3%
4	CRO - Coulsdon East	2.9%
4	CRO - Croham	2.9%
4	CRO - Heathfield	2.9%
3	CRO - Sanderstead	2.2%
2	CRO - Upper Norwood	1.4%
2	CRO - Norbury	1.4%
2	CRO - Coulsdon West	1.4%
1	CRO - Shirley	0.7%
1	CRO - Kenley	0.7%

**16-18 Not Known Breakdown**

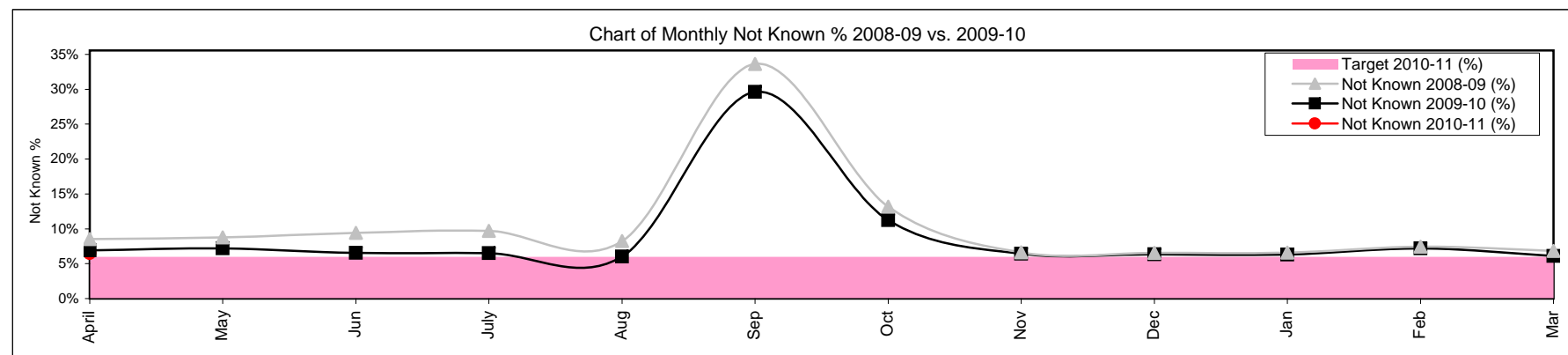
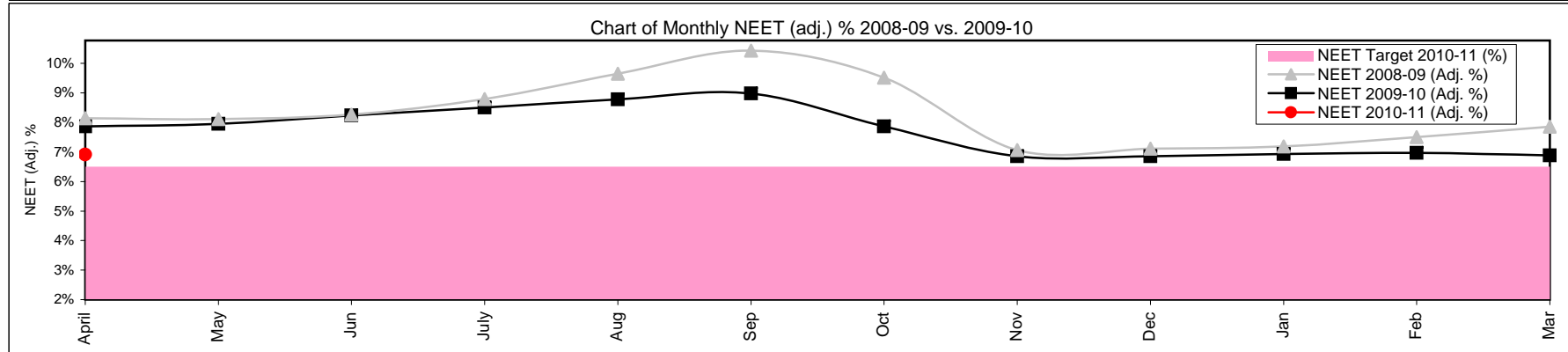
561	Not Known	6.5%	+0.4%	↑
114	Current situation not known	20.3%	-2.2%	↓
116	Cannot Be Contacted	20.7%	-1.7%	↓
0	Refused to disclose activity	0.0%	+0%	↔
331	Currency Expired	59.0%	+3.9%	↑

**19 Year Old Not Known Breakdown**

670	Not Known	17.5%	+0.7%	↑
101	Current situation not known	15.1%	-0.2%	↓
143	Cannot Be Contacted	21.3%	+0.5%	↑
3	Refused to disclose activity	0.5%	-0%	↓
423	Currency Expired	63.1%	-0.4%	↓



16-18 NEET Yearly Comparison	April	May	June	July	August	September	October	November	December	January	February	March
16-18 Cohort 2009-10	8614	8270	7977	7615	7272	10178	9294	10213	9822	9479	9235	8991
16-18 Cohort 2010-11	8633	0	0	0	0	0	0	0	0	0	0	0
EET 2009-10	7452	7136	6884	6546	6263	6550	7626	8919	8587	8304	8023	7895
EET 2010-11	7573	0	0	0	0	0	0	0	0	0	0	0
NEET 2009-10	560	528	556	559	554	603	605	618	588	562	525	526
NEET 2010-11	481	0	0	0	0	0	0	0	0	0	0	0
NEET 2009-10 (Adj. %)	7.87%	7.95%	8.24%	8.51%	8.78%	8.98%	7.87%	6.86%	6.86%	6.93%	6.97%	6.88%
NEET 2010-11 (Adj. %)	6.91%	0.00%	0.00%	0.00%	0.00%	0.00%	0.00%	0.00%	0.00%	0.00%	0.00%	0.00%
<b>NEET Target 2010-11 (%)</b>	<b>6.50%</b>	<b>6.50%</b>	<b>6.50%</b>	<b>6.50%</b>	<b>6.50%</b>	<b>6.50%</b>	<b>6.50%</b>	<b>6.50%</b>	<b>6.50%</b>	<b>6.50%</b>	<b>6.50%</b>	<b>6.50%</b>
Not Known 2009-10	595	594	523	494	439	3016	1044	655	625	596	663	550
Not Known 2010-11	561	0	0	0	0	0	0	0	0	0	0	0
Not Known 2009-10 (%)	6.91%	7.18%	6.56%	6.49%	6.04%	29.63%	11.23%	6.41%	6.36%	6.29%	7.18%	6.12%
Not Known 2010-11 (%)	6.50%	0.00%	0.00%	0.00%	0.00%	0.00%	0.00%	0.00%	0.00%	0.00%	0.00%	0.00%
<b>Target 2010-11 (%)</b>	<b>6.00%</b>	<b>6.00%</b>	<b>6.00%</b>	<b>6.00%</b>	<b>6.00%</b>	<b>6.00%</b>	<b>6.00%</b>	<b>6.00%</b>	<b>6.00%</b>	<b>6.00%</b>	<b>6.00%</b>	<b>6.00%</b>



## Monthly NEET and Not Known Cohort Analysis

### Definitions

#### 1 Introduction

- 1.1 The data within this report has been compiled from the Connexions South London Client Caseload Information Systems Management Information return to the Department of Children, Schools and Families for 2010/11.

#### 2 Definitions

- 2.1 The Not in Education, Employment or Training (NEET) cohort is defined by the following destinations:

- Any unemployed category
- Personal Development Opportunity
- Personal Development Opportunity – Waged
- Supporting Family Young Carer
- Supporting Family – Teenage Parent
- Not Available - Illness
- Pregnancy – (11 weeks to due date)
- Not Available - Religious or Cultural grounds
- Never Economically Active
- Voluntary work
- New Deal Gateway
- Not available - Other reason

## 2.2 The Not Known cohort is defined by the following destinations:

- Current situation Not Known
- Cannot be contacted
- Refused to provide information
- Currency expired

## 2.3 The Vulnerable group categories are defined as the follow target groups:

- LDD
- Teenage Parent
- Pregnancy
- Supervised by YOTS
- Care Leaver
- Substance misuse
- Young Carer
- Refugee/Asylum Seeker
- Teenage Father
- Looked After/In Care

## 2.4 The NEET adjusted percentage and numbers are calculated using the following formula:

- DCSF research determined that from those who lapsed from EET 92% were likely to still be EET and so the remaining 8% would be counted as NEET. For those who had lapsed from NEET, 58% were likely to have re-joined NEET and so the remaining 42% would be EET.
- This calculation is then applied to those who have lapsed to produce the adjusted NEET percentage.
- The adjusted lapsed figures are added back into the EET and NEET cohorts, the numbers are re-calculated (NEET/EET + NEET).