

April 2010 NEET and Not Known Cohort Analysis

The data contained within this report has been compiled from the Connexions South London Client Caseload Information System (CCIS) Management Information return for April 2010.

The Report provides an analysis of young people aged 16-18 and 19 years within the NEET group, detailed by the following categories :

- Gender
- Age
- Support Level
- Ethnic Origin
- Vulnerable Group Characteristics
- Top 25 Wards
- Not Known

The 16-18 NEET Group has also been analysed to show the following :

- Availability to the Labour Market
- Non availability to the Labour Market
- NEET Joiners & leavers

Overall

16-18

The Adjusted NEET figure for ages 16-18 in Bromley in April 2010 is 4.1%, which shows no change from March 2010. The actual number of NEET young people within Bromley is 329, which is an decrease in 11 young people from the March 2010 total of 340. The Not Known percentage for Bromley in April 2010 for this age range is 3.7% or 348 young people. This percentage is an increase of 0.1% from March 2010, where 346 young people were Not Known.

19 Year Olds

The Adjusted NEET figure for 19 year olds in Bromley in April 2010 is 5.7%, which is a 0.1% decrease from March 2010. The actual number of NEET young people within Bromley is 101 which shows no change from the March 2010 total of 101. The Not Known percentage for 19 year olds in Bromley in April 2010 is 16.6% or 597 young people. This percentage is a decrease of 0.4% from March 2010 where 618 young people were Not Known.

Gender, Age & Support Level

16-18

The 16-18 NEET totals for females in Bromley are lower than their male counterpart, with 151 (45.9%) compared to 178 (54.1%) young people respectively. The majority of 16-18 NEET are 17 (46.2%) and 18 (38.9%) years old. There were only 49 (14.9%) young people who were 16 years old and NEET in April 2010. The majority of NEET in this age range were described as having a support level of "Supported" or "Minimum", with totals of 161 (48.9%) and 104 (31.6%) each. Only 19.5% (64) of 16-18 year old NEET were classified as having "Intensive" needs.

19 Year Olds

The 19 year old NEET in Bromley are distributed contrastingly for gender, with totals of 59 (58.4%) and 42 (41.6%) for female and male young people respectively. The majority of NEET in this age range were described as having a support level of "Supported" with a total of 48 (47.5%).

Ethnicity

16-18

The majority of 16-18 NEET in Bromley in April 2010 have an ethnic group of White, with 285 young people (86.6%). The other largest totals are from the Black and Mixed ethnic groups with 16 (4.9%) and 17 (5.2%) respectively. The other ethnic groups make up 3.3% (11) of the NEET young people in this age range.

19 Year Olds

The majority of 19 year old NEET in Bromley in April 2010 have an ethnic group of White with 80 young people (79.2%). The other largest totals are from the Mixed and Black ethnic group which have 7 (6.9%) and 10 (9.9%) of the total NEET group respectively this month. The remaining ethnic groups make up 4% (4) of the NEET young people in this age range.

Vulnerable Groups

16-18

The highest total of NEET young people in Bromley having a vulnerable group characteristic in April 2010 are those described as being Supervised by YOTS and Teenage mothers with 6.7% (22) and 7.3% (24). The other largest vulnerable group of NEET young people in this age range are those described as having LDD with 18 (5.5%) young people respectively.

19 Year Olds

The highest total of NEET young people aged 19 years old having a vulnerable group characteristic are those described as Teenage mothers with 31.7% (32). The other largest vulnerable group of 19 year old NEET are those described as having LDD with 15 (14.9%) young people.

16-18 NEET Availability

Available

In April 2010 84.5% of the total 16-18 NEET group are available to the labour market. Within this available group, 223 (80.2%) are described as seeking employment, education and training. The other significant percentages are 6.8% (19) and 4.7% (13) for those young people described as NEET awaiting level 2 and Other PDOs respectively.

Not Available

In April 2010 15.5% of the total 16-18 NEET group are not available to the labour market. Within this unavailable group, 35 (68.6%) are described as NEET Teenage parents. The other significant totals are 17.7% (9) for those classified as NEET illness and 11.8% (6) for NEET pregnancy.

NEET Joiners & Leavers

Joiners

Of the 54 young people who joined the Bromley NEET group in April 2010, 42.6% (23) are from education and 13% (7) are from employment. The other largest destination type is from Currency re-established destinations with 35.2% (19) of the total young people joining the NEET group this month.

Leavers

Of the 55 young people who left the Bromley NEET group in April 2010, 1.8% (1) are going to education and 29.1% (16) are going to employment. The other largest percentage of the NEET leavers this month entered the Currency Expired group which make up 60% (33) of the total young people leaving NEET.

NEET Ward Analysis

16-18

The largest number of 16-18 NEET in Bromley in April 2010 are from the wards of Cray Valley West and Cray Valley East both 41 (12.5%) of the total NEET group respectively.

19 Year Olds

The largest numbers of 19 year old NEET in Bromley in April 2010 are from the Cray Valley East ward with 10.9% (11) of the total NEET group respectively.

Not Known Analysis

16-18

The largest proportion of the 348 young people described as Not Known have expired destination currencies with 64.7% (225). The other largest percentage are those with destinations described as Current Situation Not Known with 32.8% (114).

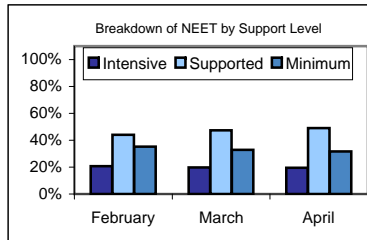
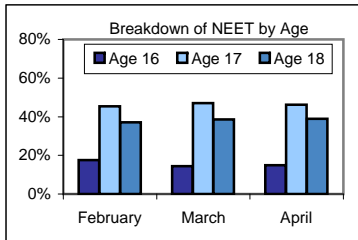
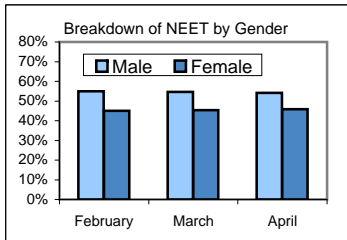
19 Year Olds

The breakdown of the 597 Not Known for the 19 year olds in Bromley in April show the largest proportion have expired destination currencies with 86.4% (516). The other largest percentage are those with destinations described as current situation not known with 12.4% (74).

NEET Aged 16-18

The Adjusted NEET Figure is 4.1% (385 Adj).

The unadjusted NEET Total is 329 and the Not Known is 3.70% (348)



Gender

54.1% (178) are Male
45.9% (151) are Female

Age

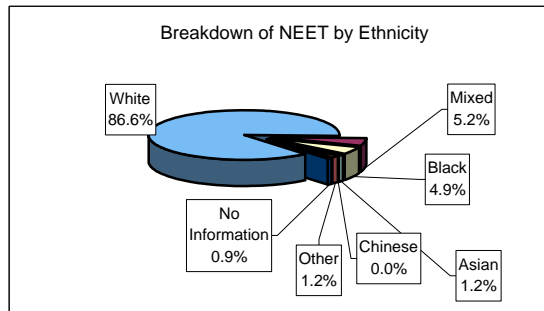
14.9% (49) are aged 16
46.2% (152) are aged 17
38.9% (128) are aged 18

Support level

31.6% (104) Minimum
48.9% (161) Supported
19.5% (64) Intensive

Ethnic Origin

285	White	86.6%
17	Mixed	5.2%
16	Black	4.9%
4	Asian	1.2%
0	Chinese	0.0%
4	Other	1.2%
3	No Information	0.9%



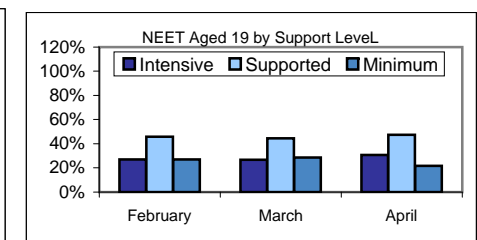
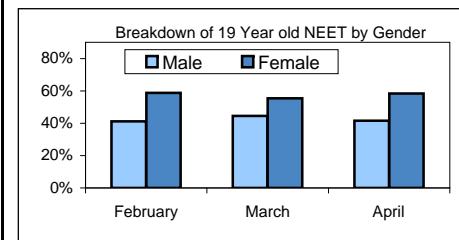
Vulnerable Group Characteristics

18	LDD	5.5%	-0.7% ↓
24	Teenage Mother	7.3%	+0.5% ↑
0	Parent	0.0%	+0% ⇌
14	Pregnancy	4.3%	-0.2% ↓
22	Supervised by YOTS	6.7%	-0.1% ↓
6	Care Leaver	1.8%	-0.5% ↓
6	Substance misuse	1.8%	+0.6% ↑
2	Young Carer	0.6%	+0% ↑
1	Refugee/Asylum Seeker	0.3%	+0% ↑
2	Teenage Father	0.6%	+0.6% ↑
13	Looked After/InCare	4.0%	+1.9% ↑

NEET Aged 19

The Adjusted NEET Figure is 5.7% (201 Adj).

The unadjusted NEET Total is 101 and the Not Known is 16.56% (597)



Gender

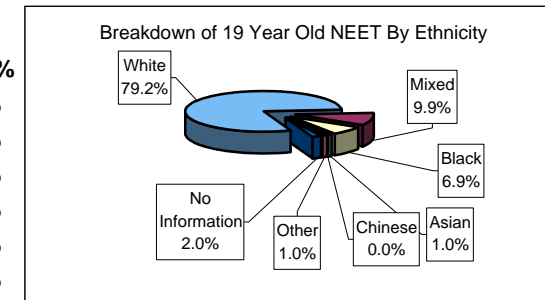
41.6% (42) are Male
58.4% (59) are Female

Support level

21.8% (22) Minimum
47.5% (48) Supported
30.7% (31) Intensive

Ethnic Origin

80	White	79.2%
10	Mixed	9.9%
7	Black	6.9%
1	Asian	1.0%
0	Chinese	0.0%
1	Other	1.0%
2	No Information	2.0%



19 year Old Vulnerable Group Characteristics

15	LDD	14.9%	+0% ⇌
32	Teenage Mother	31.7%	+3% ↑
0	Parent	0.0%	+0% ⇌
4	Pregnancy	4.0%	+0% ⇌
2	Supervised by YOTS	2.0%	+0% ⇌
8	Care Leaver	7.9%	+5.9% ↑
0	Substance misuse	0.0%	+0% ⇌
1	Young Carer	1.0%	+1% ↑
0	Refugee/Asylum Seeker	0.0%	+0% ⇌
1	Teenage Father	1.0%	+0% ⇌
2	Looked After/InCare	2.0%	+0% ⇌

NEET Aged 16-18

Availability

84.5% (278) of the NEET group are available to the labour market.

223	Seeking employment, education or training	80.2%	+0.8% ↑
0	Waged PDOs	0.0%	+0% ⇄
13	Other PDOs	4.7%	-0.1% ↓
2	Not yet ready for work or learning	0.7%	-0.6% ↓
4	Awaiting an E2E place	1.4%	+0.1% ↑
5	Awaiting sub level 2 place	1.8%	+0.1% ↑
19	Awaiting level 2 place	6.8%	+0.1% ↑
9	Awaiting level 3+ place	3.2%	-0.5% ↓
1	Start Date agreed	0.4%	+0% ↑
0	Activity Agreement	0.0%	+0% ⇄
2	New Deal Gateway	0.7%	+0% ↑

15.5% (51) are not available to the labour market.

1	Young carers	2.0%	+2% ↑
35	Teenage parents	68.6%	+2.7% ↑
9	Illness	17.7%	-0.5% ↓
6	Pregnancy	11.8%	-4.2% ↓
0	Religious grounds	0.0%	+0% ⇄
0	Unlikely to be economically active	0.0%	+0% ⇄
0	Other reason	0.0%	+0% ⇄
2	Other (not EET or NEET)	0.6%	-0.3% ↓
2	Custody	0.6%	-0.3% ↓
0	Refugees/Asylum seekers	0.0%	+0% ⇄

NEET Joiners

54 young people joined the NEET group in April

23	From Education	42.6%	-4.7% ↓
7	From Employment	13.0%	-1.6% ↓
2	From Government supported training	3.7%	-9% ↑
0	From NEET in other area	0.0%	+0% ⇄
3	From Other (inc custodial sentence)	5.6%	-19.9% ↓
19	From Currency re-established	35.2%	+35.2% ↑

NEET Leavers

55 young people left the NEET group in April

1	Into Education	1.8%	-1.9% ↓
16	Into Employment	29.1%	+3.2% ↑
5	Into Government Supported Training	9.1%	-13.1% ↓
0	Into NEET in other area	0.0%	+0% ⇄
0	Into Custodial Sentence	0.0%	-1.9% ↓
0	Into Moved Away	0.0%	-1.9% ↓
0	Into Cannot Be Contacted	0.0%	+0% ⇄
0	Into Refused to disclose activity	0.0%	+0% ⇄
33	Into Currency Expired	60.0%	+15.6% ↑
0	Into Unknown Activity	0.0%	+0% ⇄
0	Into Other Reason	0.0%	+0% ⇄

16-18 NEET Breakdown by Top 25 Wards

41	BRO - Cray Valley West	12.5%
41	BRO - Cray Valley East	12.5%
32	BRO - Penge and Cator	9.7%
26	BRO - Orpington	7.9%
20	BRO - Plaistow and Sundridge	6.1%
19	BRO - Bromley Common and Keston	5.8%
18	BRO - Crystal Palace	5.5%
14	BRO - Mottingham and Chislehurst North	4.3%
13	BRO - Biggin Hill	4.0%
12	BRO - Bromley Town	3.7%
11	BRO - Clock House	3.3%
10	BRO - Farnborough and Crofton	3.0%
9	BRO - Shortlands	2.7%
9	BRO - Bickley	2.7%
9	BRO - Chislehurst	2.7%
8	BRO - Hayes and Coney Hall	2.4%
7	BRO - West Wickham	2.1%
7	BRO - Petts Wood and Knoll	2.1%
7	BRO - Kelsey and Eden Park	2.1%
6	BRO - Copers Cope	1.8%
5	BRO - Darwin	1.5%
5	BRO - Chelsfield and Pratts Bottom	1.5%

19 year Old NEET Breakdown by Top 25 Wards

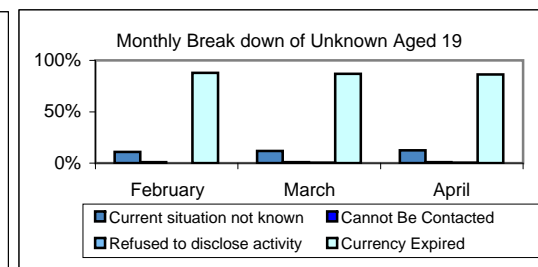
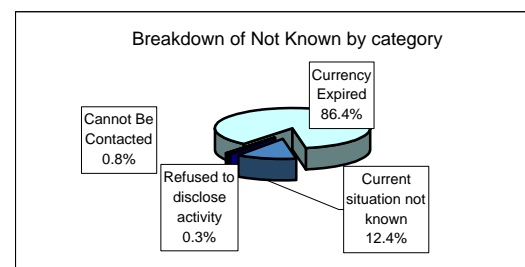
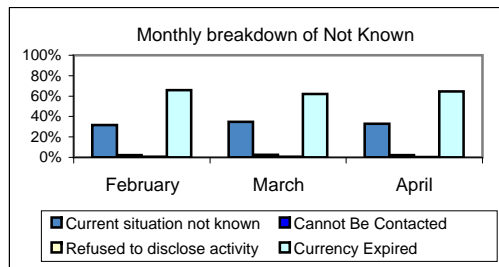
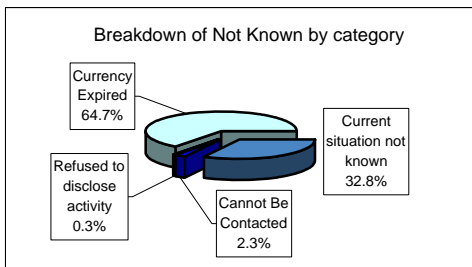
11	BRO - Cray Valley East	10.9%
10	BRO - Penge and Cator	9.9%
10	BRO - Bromley Common and Keston	9.9%
10	BRO - Bromley Town	9.9%
8	BRO - Cray Valley West	7.9%
8	BRO - Plaistow and Sundridge	7.9%
8	BRO - Crystal Palace	7.9%
6	BRO - Orpington	5.9%
5	BRO - Mottingham and Chislehurst North	5.0%
4	BRO - Farnborough and Crofton	4.0%
4	BRO - Copers Cope	4.0%
3	BRO - Hayes and Coney Hall	3.0%
3	BRO - Chelsfield and Pratts Bottom	3.0%
2	BRO - Shortlands	2.0%
2	BRO - West Wickham	2.0%
2	BRO - Petts Wood and Knoll	2.0%
2	BRO - Kelsey and Eden Park	2.0%
1	BRO - Biggin Hill	1.0%
1	BRO - Clock House	1.0%
1	BRO - Bickley	1.0%

16-18 Not Known Breakdown

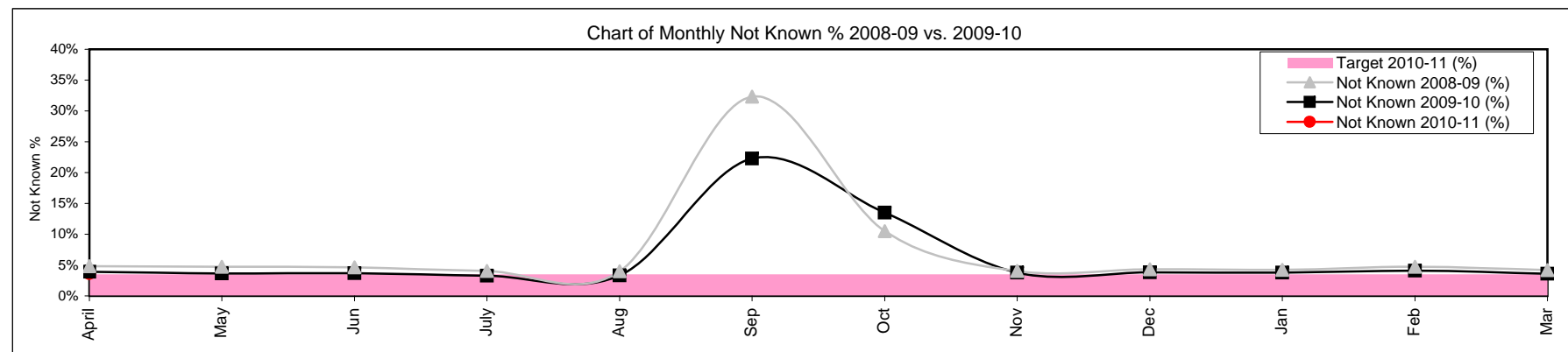
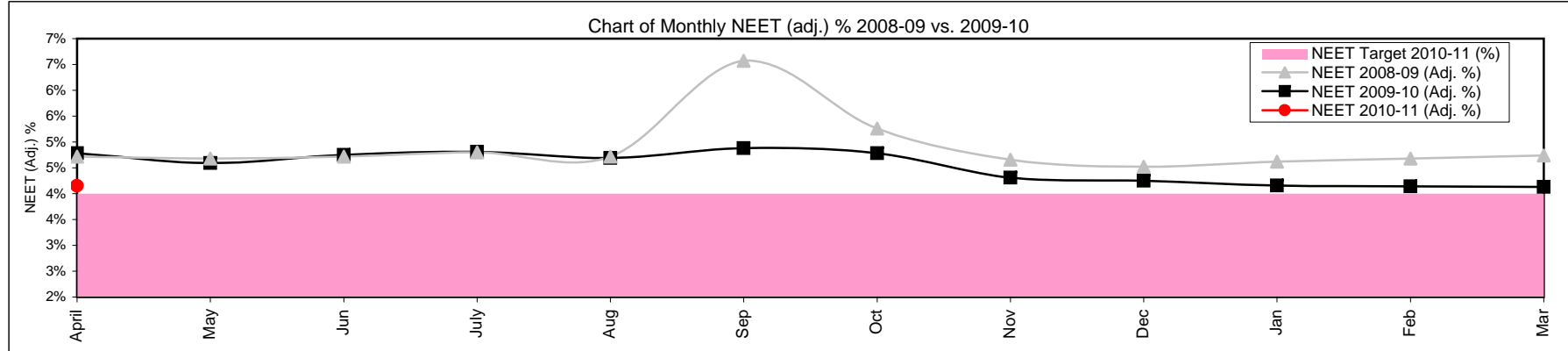
348	Not Known	3.7%	+0.1%	↑
114	Current situation not known	32.8%	-1.9%	↓
8	Cannot Be Contacted	2.3%	-0.3%	↓
1	Refused to disclose activity	0.3%	-0.3%	↓
225	Currency Expired	64.7%	+2.5%	↑

19 Year Old Not Known Breakdown

597	Not Known	16.6%	-0.5%	↓
74	Current situation not known	12.4%	+0.4%	↑
5	Cannot Be Contacted	0.8%	+0%	↑
2	Refused to disclose activity	0.3%	+0.2%	↑
516	Currency Expired	86.4%	-0.6%	↓



16-18 NEET Yearly Comparison	April	May	June	July	August	September	October	November	December	January	February	March
16-18 Cohort 2009-10	9449	9096	8784	8528	8228	11561	11254	11067	10588	10252	9983	9676
16-18 Cohort 2010-11	9418	0	0	0	0	0	0	0	0	0	0	0
EET 2009-10	8695	8417	8118	7900	7635	8665	9380	10217	9779	9496	9225	8987
EET 2010-11	8739	0	0	0	0	0	0	0	0	0	0	0
NEET 2009-10	381	343	338	345	317	320	353	428	397	367	348	340
NEET 2010-11	329	0	0	0	0	0	0	0	0	0	0	0
NEET 2009-10 (Adj. %)	4.78%	4.59%	4.75%	4.81%	4.69%	4.88%	4.78%	4.31%	4.25%	4.16%	4.14%	4.13%
NEET 2010-11 (Adj. %)	4.15%	0.00%	0.00%	0.00%	0.00%	0.00%	0.00%	0.00%	0.00%	0.00%	0.00%	0.00%
NEET Target 2010-11 (%)	4.00%	4.00%	4.00%	4.00%	4.00%	4.00%	4.00%	4.00%	4.00%	4.00%	4.00%	4.00%
Not Known 2009-10	369	331	325	280	274	2573	1517	416	406	385	406	346
Not Known 2010-11	348	0	0	0	0	0	0	0	0	0	0	0
Not Known 2009-10 (%)	3.91%	3.64%	3.70%	3.28%	3.33%	22.26%	13.48%	3.76%	3.83%	3.76%	4.07%	3.58%
Not Known 2010-11 (%)	3.70%	0.00%	0.00%	0.00%	0.00%	0.00%	0.00%	0.00%	0.00%	0.00%	0.00%	0.00%
Target 2010-11 (%)	3.50%	3.50%	3.50%	3.50%	3.50%	3.50%	3.50%	3.50%	3.50%	3.50%	3.50%	3.50%



Monthly NEET and Not Known Cohort Analysis

Definitions

1 Introduction

- 1.1 The data within this report has been compiled from the Connexions South London Client Caseload Information Systems Management Information return to the Department of Children, Schools and Families for 2010/11.

2 Definitions

- 2.1 The Not in Education, Employment or Training (NEET) cohort is defined by the following destinations:

- Any unemployed category
- Personal Development Opportunity
- Personal Development Opportunity – Waged
- Supporting Family Young Carer
- Supporting Family – Teenage Parent
- Not Available - Illness
- Pregnancy – (11 weeks to due date)
- Not Available - Religious or Cultural grounds
- Never Economically Active
- Voluntary work
- New Deal Gateway
- Not available - Other reason

2.2 The Not Known cohort is defined by the following destinations:

- Current situation Not Known
- Cannot be contacted
- Refused to provide information
- Currency expired

2.3 The Vulnerable group categories are defined as the follow target groups:

- LDD
- Teenage Parent
- Pregnancy
- Supervised by YOTS
- Care Leaver
- Substance misuse
- Young Carer
- Refugee/Asylum Seeker
- Teenage Father
- Looked After/In Care

2.4 The NEET adjusted percentage and numbers are calculated using the following formula:

- DCSF research determined that from those who lapsed from EET 92% were likely to still be EET and so the remaining 8% would be counted as NEET. For those who had lapsed from NEET, 58% were likely to have re-joined NEET and so the remaining 42% would be EET.
- This calculation is then applied to those who have lapsed to produce the adjusted NEET percentage.
- The adjusted lapsed figures are added back into the EET and NEET cohorts, the numbers are re-calculated (NEET/EET + NEET).